

## Peptide-based Polyclonal Antibody Production against P110 Protein of *Mycoplasma genitalium*

Omid Zarei<sup>1,2</sup>, Gholam Reza Irajian<sup>1</sup>, Amir Hassan Zarnani<sup>3,4</sup>, Leili Chamani-Tabriz<sup>5</sup>, Shaghayegh Emami<sup>2</sup>, Mahmood Jeddi-Tehrani<sup>2</sup>, and Hodjattallah Rabbani<sup>2\*</sup>

1. Department of Microbiology, School of Medicine, Tehran University of Medical Sciences, Tehran, Iran

2. Monoclonal Antibody Research Center, Avicenna Research Institute, ACECR, Tehran, Iran

3. Nanobiotechnology Research Center, Avicenna Research Institute, ACECR, Tehran, Iran

4. Immunology Research Center, School of Medicine, Tehran University of Medical Sciences, Tehran, Iran

5. Reproductive Biotechnology Research Center, Avicenna Research Institute, ACECR, Tehran, Iran

### Abstract

*Mycoplasma genitalium* (*M.genitalium*) is a sexually transmitted pathogen. Detection of this microorganism in clinical specimens by culture is rather difficult and time consuming. The aim of this study was to produce polyclonal antibody against a synthetic peptide from P110 protein of *M.genitalium* in order to develop a diagnostic tool for detection of this microorganism in clinical specimens. A synthetic peptide from P110 protein was conjugated to Keyhole Limpet Hemocyanin (KLH) and used for immunization of a white New Zealand rabbit. The produced antibody was purified by affinity chromatography and its specific interaction with immunizing peptide was determined by ELISA. Immunoreactivity of the antibody was also tested by Western blotting in bacterial cell lysate prepared from *M.genitalium* G-37. To confirm its application as a diagnostic tool, indirect immunofluorescent staining method was performed on *M.genitalium*-infected PBMC using anti-P110 as the primary antibody. The results showed that produced antibody has excellent reactivity with immunizing peptide and also detected a single band of 110 *kDa* corresponding to P110 protein. *M.genitalium*-infected PBMC showed a bright fluorescent signal in IF staining. This antibody might be used as a tool in diagnostic applications.

\* Corresponding author:  
Hodjattallah Rabbani, Ph.D.,  
Monoclonal Antibody  
Research Center,  
Avicenna Research Institute,  
ACECR, Tehran, Iran  
Tel: +98 21 22432020  
Fax: +98 21 2243202  
E-mail: hodrab@ki.se  
Received: 13 Apr 2011  
Accepted: 15 Jun 2011

*Avicenna J Med Biotech* 2011; 3(2): 79-85

**Keywords:** Antibodies, *Mycoplasma genitalium*, Peptides

### Introduction

*Mycoplasma genitalium* is a clinically important sexually transmitted pathogen that was first isolated in urethral specimens from two men with non-gonococcal urethritis by culture in 1981<sup>(1)</sup>. It is one of the major causes of non-gonococcal urethritis in men<sup>(2-4)</sup>. Association between *M.genitalium* with chronic persistent prostatitis has been shown<sup>(5-6)</sup>. The capacity of this microorganism for malignant transformation of benign human

epithelial cells has been reported<sup>(7)</sup>. The association between *M.genitalium* and urethritis, cervicitis, endometritis, salpingitis and Pelvic Inflammatory Disease (PID) has also been shown in women<sup>(8-10)</sup>. Detection of this microorganism in clinical specimens by culture is rather difficult and time consuming. MG192 (mgp C) gene (a part of the MgPa operon), which encodes an immunogenic and cyto-adherence related protein, designated as

P110, is a highly variable within and among *in vitro* cultured strains and *in vivo* specimens. However there are some regions that do not undergo variation<sup>(11-13)</sup>. In this study we designed and used a synthetic peptide derived from constant part of P110 protein to produce polyclonal antibody in order to develop a diagnostic tool for detection of *M.genitalium* in clinical specimens.

## Materials and Methods

### Peptide design and conjugation

A 16-mer synthetic peptide, sequencing NPGNDSLLSTTDNNIA, from constant part of P110 protein of *M.genitalium* was selected as immunogen. A cysteine residue was added to the C-terminus end of peptide to facilitate the conjugation to carrier protein. Immunograde peptide was purchased from Thermo Electron Corporation (GmbH, Ulm, Germany) and was conjugated to Keyhole Limpet Hemocyanin (KLH) and Bovine Serum Albumin (BSA), separately as described elsewhere<sup>(14)</sup>. The peptide-KLH and peptide-BSA conjugates were used for immunization and conjugation assessment, respectively.

### Confirmation of peptide conjugation by SDS-PAGE

To check the efficacy of conjugation, 10  $\mu$ g of peptide-BSA conjugate was mixed with 10  $\mu$ l of sample buffer and boiled for 5 min. Electrophoresis was performed on 10% SDS-PAGE condition using mini-PROTEAN electrophoresis instrument (Bio-Rad laboratories, Philadelphia, PA) with 100 mA for 1 hr. The gel was stained with Coomassie Blue R-250 (Sigma, St. Louis, MO). The change in mobility shift of conjugated BSA represented the efficiency of conjugation (Figure 1).

### Immunization protocol

A female white New Zealand rabbit was immunized 3 times with one-week interval for each injection.

In first immunization, 100  $\mu$ g KLH-peptide conjugate and 250  $\mu$ l IMMACCEL (Pick cell Laboratories, Netherlands) was mixed with an equal volume of Freund's complete adjuvant

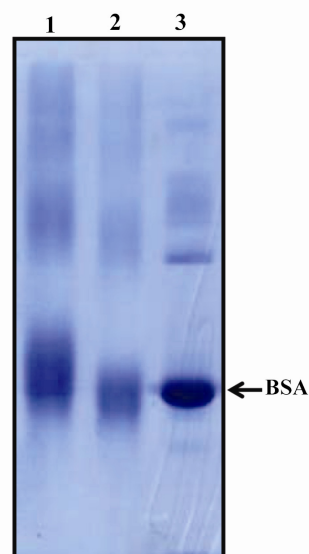


Figure 1. SDS-PAGE analysis of conjugated P110 peptide. Changing in mobility shift represents the efficacy of conjugation. Lane 1) Conjugated peptide-BSA. Lane 2) BSA-MBS (m-Maleimidobenzoyl- N -Hydroxysuccinimide Ester). Lane 3) BSA. Because of very high molecular weight of KLH, it is not possible to run the KLH conjugate on SDS-PAGE. In this context BSA conjugate was used for efficacy of conjugation

(Sigma), and injected subcutaneously in 4-6 regions. For the subsequent immunizations, 500 $\mu$ g peptide-KLH and 250  $\mu$ l IMMACCEL were admixed and injected with Freund's incomplete adjuvant (Sigma).

The last immunization was perfumed using 1000  $\mu$ g peptide-KLH together with 250  $\mu$ l IMMACCEL and Freund's incomplete adjuvant. The IMMACCEL reduces the antibody production time in rabbit from standard 80-day protocol to 28 day without any difference in affinity or specificity<sup>(15)</sup>.

### Titration of antibody

Before each immunization and 7 and 14 days after the last immunization, blood was drawn by venipuncture of the rabbit ear and allowed to clot for periods of 2 to 3 hr at room temperature before preparation of serum. Titration of the specific polyclonal antibody was then performed as follow: A96-well ELISA plate was coated with 100  $\mu$ l of the immunizing peptide (20 mg/ml in PBS) at 37  $^{\circ}$ C for one hr followed by overnight incubation at 4  $^{\circ}$ C. The plate was washed 3 times with PBS containing 0.05% Tween 20 (PBS-T) for 5 min. The wells were then

blocked with 2.5% BSA at 37 °C for 1.5 hr. Wells were washed 3 times as above and rabbit serum was added to the wells in two fold serial dilutions starting from 1:100. The plate was incubated at 37 °C for 1.5 hr and washed again with PBS-T.

At the next step, 100  $\mu$ l of 1:1000 dilution of HRP-conjugated sheep anti-rabbit immunoglobulin (Avicenna Research Institute, Tehran, Iran) was added to the wells and incubation was continued for 1 hr, at 37 °C. After washing, 100  $\mu$ l of Tetramethylbenzidine (TMB) chromogen was added to each well and the plate was incubated at room temperature in a dark place. After 15 min, the reaction was stopped by adding 30  $\mu$ l of stopping solution (0.16 M H<sub>2</sub>SO<sub>4</sub>) to each well. The Optical Density (OD) of the reaction was measured at 450 nm by an ELISA reader. Negative controls included omission of coating layer, serum (as primary antibody) or combination of both (Figure 2).

#### Antibody purification

Rabbit serum was filtered through 0.45  $\mu$ m filter and antibody was purified by affinity chromatography column prepared by coupling immunogenic peptide to SulfoLink Coupling Resin (Thermo Scientific). The elution was

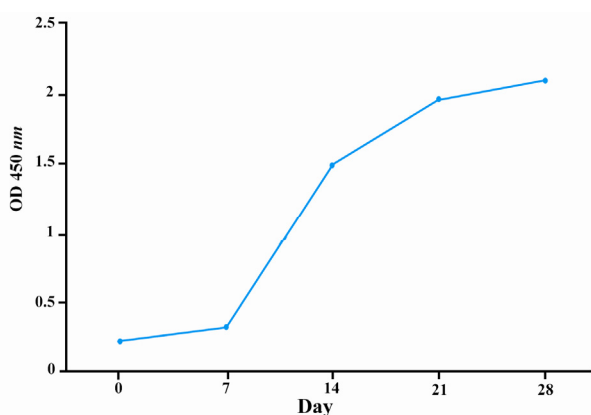


Figure 2. Kinetic evaluation of anti-P110 antibody production in serum of immunized rabbit. A white New Zealand rabbit was immunized with peptide P110-KLH conjugate. The reactivity of 1:1000 diluted sera from immunized rabbit with immunizing peptide was determined at different time intervals by ELISA. The specific antibody titer was upraised in immunized rabbit over the time and reached to the plateau after 28 days

performed using 0.1M glycine. HCl (pH=2.6). The pH of eluted antibody was adjusted to 7.0 with 1 M Tris.HCl pH=9.0. The eluted antibody was dialyzed overnight against PBS pH=7.5. The reactivity of the antibody was measured by ELISA and its purity evaluated by SDS-PAGE (Figures 3 and 4).

#### *M.genitalium* cultivation and lysate preparation

*M.genitalium* G-37 (a gift from Dr. Jaume Piñol, Institut de Biocienologia i Biomedicina Universitat Autònoma de Barcelona) was cultured in SP-4 medium<sup>(16)</sup>. The color changing (reddish yellow) in medium after 48-72 hr was evident for mycoplasma growth. The surface-attached mycoplasmas were harvested by scraping off in PBS. The bacterial cell lysate was prepared by sonication in 500  $\mu$ l of lysis buffer containing 1% Triton X-100, 50 mM Tris-HCl, pH=7.4, 150 mM NaCl, 5 mM EDTA, 1% protease inhibitor cocktail (Sigma) and 10% phosphatase inhibitor (Roche Diagnostics GmbH, Penzberg, Germany) on ice. The protein concentration of lysate was measured by BCA protein assay kit (Thermo Scientific).

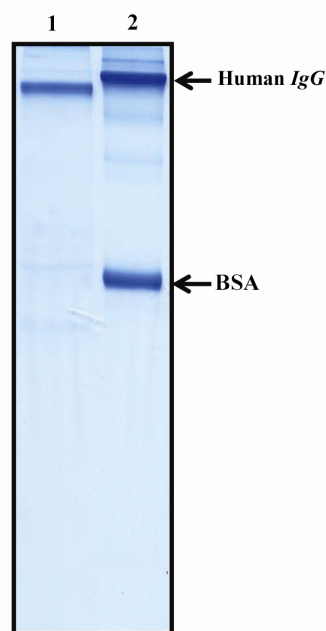


Figure 3. SDS-PAGE analysis of purified anti-P110 antibody. Polyclonal anti-P110 antibody was produced in rabbit and purified over peptide affinity column. The purity of purified antibody was assessed by SDS-PAGE. Lane 1) Purified antibody. Lane 2) A mixture of human IgG and BSA for comparison

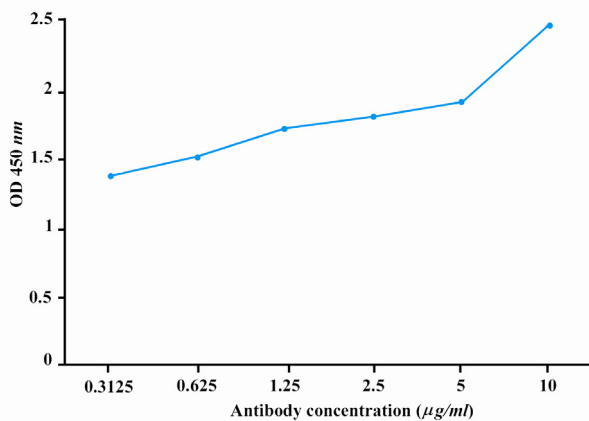


Figure 4. Titration of purified rabbit anti-P110 polyclonal antibody with immunizing peptide. Anti-P110 polyclonal antibody was purified over peptide affinity column and its reactivity with immunizing peptide was titrated by ELISA

**Western blotting**

Twenty µg of *M.genitalium* lysate was run on a 10% SDS-PAGE (100 V for 2 hr). After electrophoresis, resolved proteins were transferred onto Immobilon-PVDF membrane (Millipore Corporation, USA). The membrane was blocked for overnight at 4 °C with 5% non-fat milk in PBS plus 0.05% Tween 20 (PBS-T). All antibody incubations were performed in PBS-T containing 3% non-fat milk. Filter was incubated with 10 µg/ml of antibody 1.5 hr at room temperature. After extensive washing with PBS-T, the filter was incubated with peroxidase-conjugated sheep anti-rabbit immunoglobulin (Avicenna Research Institute) for 1 hr at room temperature followed by washing and developing with ECL chemiluminescence detection system (GE Healthcare, Uppsala, Sweden) (Figure 5).

**Immunofluorescent (IF) staining**

The Peripheral Blood Mononuclear Cells (PBMC) from a healthy donor were separated by ficoll density gradient centrifugation<sup>(17)</sup>. Freshly-prepared PMBC were cultured (2-3×10<sup>4</sup> cells/well) on an 8-well laminated glass slides (Paul Marienfeld GmbH & Co. KG, LaudaKönigshofen, Germany) in RPMI 1640 contain 10% FBS (Invitrogen, Carlsbad, CA) with subsequent incubation in moisturized and 5% CO<sub>2</sub> conditions for overnight. The cultured and harvested *M.genitalium* was dispersed through 25-gauge needle and passed

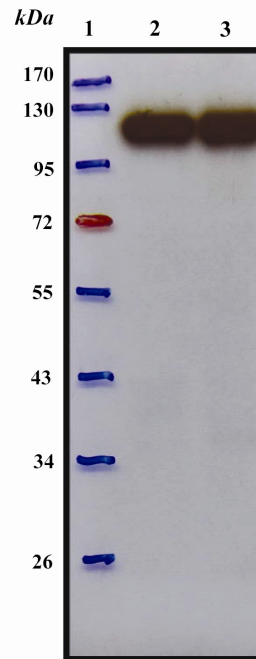
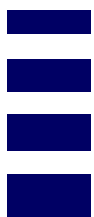


Figure 5. Western blot analysis of purified anti-P110 antibody. Bacterial cell lysate from *M.genitalium* G-37 was prepared by sonication and subjected to Western blot. Polyclonal anti-P110 antibody detected a specific band of 110 kDa. Lane 1) Protein marker (Fermentas). Lane 2) Reducing conditions. Lane 3) Non-reducing conditions

through 0.45 µm filter<sup>(18)</sup> followed by infecting the isolated PBMC. The infected cells were seeded on glass slide and incubated at 37 °C for 3 hr. The slides were washed by Tris-Buffered Saline (TBS), pH=7.4, air-dried at room temperature for 15 min, followed by permeabilization by acetone (at -20 °C) for 2 min. The slides were kept at 4 °C for 30 min for drying. As negative control, few PBMC-cultured slides, were prepared without infecting by *M.genitalium*.

The uninfected and *M.genitalium*-infected slides were washed with TBS containing 0.1% bovine serum albumin (TBS-BSA) for three times, each 3 min. Slides were then blocked with 5% sheep serum for 10 min at room temperature. The primary anti-P110 antibody was diluted in TBS-BSA to a final concentration of 10 µg/ml and added to the slides. Slides were incubated at room temperature for 60 min followed by three times (3×3 min) washing steps with TBS-BSA. Slides were incubated at room temperature with Fluorescein Isothiocyanate (FITC)-conjugated sheep anti-rabbit polyclonal antibody



(1:100 TBS-BSA) (Avicenna Research Institute) for 45 *min*. After washing with TBS-BSA, the nuclei were counterstained by 4',6-diamidino-2-phenylindole dihydrochloride (DAPI) (Sigma) at concentration of 1  $\mu\text{g/ml}$  for 5 *min*, then the slides were washed, mounted in TBS-glycerol 80% and examined under a fluorescence microscope (Olympus, Tokyo, Japan) (Figure 6).

## Results

### Peptide conjugation and antibody titration

Proper conjugation of peptide to carrier protein was assessed by SDS-PAGE electrophoresis. The change in mobility shift of peptide-BSA conjugate in SDS-PAGE gel represented the efficiency of conjugation (Figure 1). The presence of antibody against immunizing peptide in rabbit serum was evaluated by ELISA before and after immunization. Results indicated the presence of antibody against immunizing peptide in rabbit serum which was upraised considerably and reached to the plateau at day 28 post immunization (Figure 2).

### Evaluation of purified antibody

SDS-PAGE analysis of the purified antibody revealed the presence of a single band of about 150 *kDa* indicative of the desired purity (Figure 3). Purified antibody exhibited excellent immunoreactivity with immunizing

peptide in ELISA assay as well as suggesting its functionality (Figure 4).

### Western blot analysis of anti-P110 antibody

The reactivity of the purified antibody to its corresponding native protein was determined by Western blot. The produced antibody recognized a single band of 110 *kDa* representative of P110 protein of *M.genitalium* G-37 both at reducing and non-reducing conditions (Figure 5).

### Immunofluorescence staining of *M.genitalium*-infected PBMC

To analyse the capability of produced antibody to recognize *M.genitalium* in infected cells, indirect immunofluorescent assay was performed. Infected cells showed a bright speckled fluorescent signal located mainly in the cytoplasm of the cells 3 *hr* after infection (Figure 6).

## Discussion

The association between *M.genitalium* and infections in men and women has been shown since its discovery in 1981<sup>(19)</sup>. Most mycoplasmas can grow in special culture media but *M.genitalium* grows rather difficult<sup>(20)</sup>. Therefore, other diagnostic methods must be sought.

Antibodies could be produced virtually against any desired compound. The first step in the production of antibody is selection of a proper target. The decision about producing poly- or monoclonal antibodies depends on the application. The production of polyclonal antibodies is faster, less expensive, and less technically demanding than monoclonal antibodies. Monospecificity of monoclonal antibodies may limit their applications as the reactivity of these antibodies can be affected by a small change in the structure of an epitope including genetic polymorphism, glycosylation, and denaturation. Monoclonal antibodies are also highly susceptible to small changes in pH and salt concentration. Modification of antibodies by covalently linking to a fluorochrome or radionuclide may alter their binding efficacy. The polyclonal antibodies

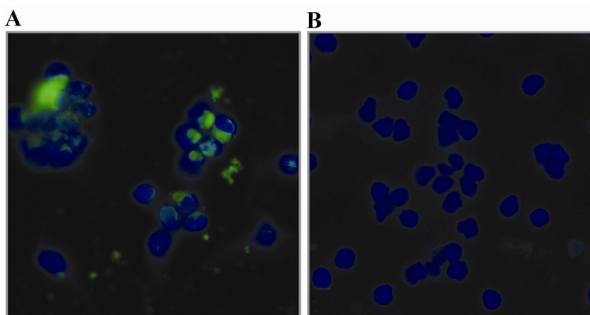


Figure 6. Immunofluorescent staining of *M.genitalium* infected PBMC using purified anti-P110 antibody. PBMC from a human healthy individual was infected with *M.genitalium* and the presence of organism in infected cells was monitored by indirect immunofluorescent staining using polyclonal anti-P110 antibody 3 *hr* after infection. DAPI was used for staining the nucleus (blue). The green speckled fluorescence signal shows the presence of *M.genitalium* in infected PBMC (A); Uninfected PBMC served as negative control (B)

bypass such problems with their reactivity to the vast variety of epitopes<sup>(21)</sup>.

Seemingly, there is not any commercial antibody against *M.genitalium* available in the market. We produced polyclonal antibody against a synthetic peptide derived from the constant part of P110. There are several studies found in the literature indicating production of poly-or monoclonal antibodies against whole cell or recombinant proteins of *M.genitalium* for different purposes<sup>(22-26)</sup>. The produced antibody showed specific interaction with immunogenic peptide by ELISA and it also recognized native P110 protein by Western blot and IF assay.

As designed peptide has been selected from the constant part of P110 protein, antigenic variations in *M.genitalium* do not impede the reactivity of this antibody. No cross-reactivity of this antibody with human cell lysates in both Western blot and immunofluorescence applications increases the specificity impact of this antibody making it suitable for detecting of this microorganism in clinical specimens. A clear example would be using urine sample from the infected patients for diagnostic IF assay.

### Conclusion

Although sequence of this immunogenic peptide has theoretically no similarity to any other mycoplasma strains, the cross reactivity with other mycoplasma strains should be investigated in practice. Further inhibition assay studies are warranted to evaluate the capability of this antibody in preventing the infection of eukaryotic cells. In the case of functionality of the produced polyclonal antibody in inhibition assay, this peptide and the epitopes thereof could be used for production of monoclonal antibody for potential therapeutic purposes.

### Acknowledgement

This work was supported by a grant from Avicenna Research Institute (ARI), Tehran, Iran and Tehran University of Medical Sciences, Tehran, Iran. We would like to express

our gratitude to Dr. Jaume Piñol, Institut de Biotecnologia i Biomedicina Universitat Autònoma de Barcelona, Spain for providing us the *M.genitalium* G-37 strain as well as great theoretical assistance in optimizing the culturing conditions.

### References

1. Tully JG, Cole RM, Taylor-Robinson D, Rose DL. A newly discovered mycoplasma in the human urogenital tract. *Lancet* 1981;317(8233):1288-1291.
2. Tully JG, Taylor-Robinson D, Rose DL, Cole RM, Bove JM. *Mycoplasma genitalium*, a new species from the human urogenital tract. *Int J Syst Bacteriol* 1983;33:387-396.
3. Jensen JS, Orsum R, Dohn B, Uldum S, Worm AM, Lind K. *Mycoplasma genitalium*: a cause of male urethritis? *Genitourin Med* 1993;69(4):265-269.
4. Totten PA, Schwartz MA, Sjostrom KE, Kenny GE, Handsfield HH, Weiss JB, et al. Association of *Mycoplasma genitalium* with nongonococcal urethritis in heterosexual men. *J Infect Dis* 2001;183(2): 269-276.
5. Kreiger JN, Riley DE. Chronic prostatitis: Charlottesville to Seattle. *J Urol* 2004;172(6):2557-2560.
6. Mandar R, Raukas E, Turk S, Korrovits P, Punab M. *Mycoplasmas* in semen of chronic prostatitis patients. *Scand J UrolNephrol* 2005;39(6):479-482.
7. Namiki K, Goodison S, Porvasnik S, Allan RW, Iczkowski KA, Urbanek C, et al. Persistent exposure to *Mycoplasma* induces malignant transformation of human prostate cells. *PloS One* 2009;4 (9):e6872.
8. Falk L, Fredlund H, Jensen JS. Signs and symptoms of urethritis and cervicitis among women with or without *Mycoplasma genitalium* or *Chlamydia trachomatis* infection. *Sex Transm Infect* 2005;81: 73-78.
9. Taylor-Robinson D. *Mycoplasma genitalium*-an up-date. *Int J STD AIDS* 2002;13(3):145-151.
10. Cohen CR, Mugo NR, Astete SG, Odondo R, Manhart LE, Kiehlbauch JA, et al. Detection of *Mycoplasma genitalium* in women with laparoscopically diagnosed acute salpingitis. *Sex Transm Infect* 2005;81:463-466.
11. Ma L, Jensen JS, Myers L, Burnett J, Welch M, Jia Q, et al. *Mycoplasma genitalium*: an efficient strategy to generate genetic variation from a minimal genome. *Mol Microbiol* 2007;66(1):220-236.

12. Iverson-Cabral SL, Astete SG, Cohen CR, Totten PA. *mgpB* and *mgpC* sequence diversity in *Mycoplasma genitalium* is generated by segmental reciprocal recombination with repetitive chromosomal sequences. *Mol Microbiol* 2007;66(1):55-73.
13. Ma L, Jensen JS, Mancuso M, Hamasuna R, Jia Q, McGowin CL, et al. Genetic variation in the complete *MgPa* operon and its repetitive chromosomal elements in clinical strains of *Mycoplasma genitalium*. *PLoS One* 2010;5(12):e15660.
14. Hadavi R, Zarnani AH, Ahmadvand N, Mahmoudi AR, Bayat AA, Mahmoudian J, et al. Production of monoclonal antibody against human nestin. *Avicenna J Med Biotech* 2010;2(2):69-77.
15. Litvinov S. New adjuvant for accelerated and enhanced antibody response. *Nature Methods* 2009;6:10-11.
16. Tully JG, Rose DL, Whitcomb RF, Wenzel RP. Enhanced isolation of *Mycoplasma pneumoniae* from throat washings with a newly-modified culture medium. *J Infect Dis* 1979;139(4):478-482.
17. Ferrante A, Thong YH. Optimal conditions for simultaneous purification of mononuclear and polymorphonuclear leucocytes from human blood by the hypaque-ficoll method. *J Immunol Methods* 1980;36(2):109-117.
18. Ueno PM, Timenetsky J, Centonze VE, Wewer JJ, Cagle M, Stein MA, et al. Interaction of *Mycoplasma genitalium* with host cells: evidence for nuclear localization. *Microbiology* 2008;154(10):3033-3041.
19. Jones L, Felblinger D, Cooper L. *Mycoplasma genitalium*: more prevalent than you think. *Nurse Pract* 2009;34(8):50-52.
20. Manhart LE, Kay N. *Mycoplasma genitalium*: Is it a sexually transmitted pathogen? *Curr Infect Dis Rep* 2010;12(4):306-313.
21. Lipman NS, Jackson LR, Trudel LJ, Weis-Garcia F. Monoclonal versus polyclonal antibodies: distinguishing characteristics, applications, and information resources. *ILAR J* 2005;46(3):258-268.
22. Clausen HF, Fedder J, Drasbek M, Nielsen PK, Toft B, Ingerslev HJ, et al. Serological investigation of *Mycoplasma genitalium* in infertile women. *Hum Reprod* 2001;16(9):1866-1874.
23. Svenstrup HF, Fedder J, Abraham-Peskir J, Birkelund S, Christiansen G. *Mycoplasma genitalium* attaches to human spermatozoa. *Hum Reprod* 2003;18(10):2103-2109.
24. Svenstrup HF, Nielsen PK, Drasbek M, Birkelund S, Christiansen G. Adhesion and inhibition assay of *Mycoplasma genitalium* and *M. pneumoniae* by immunofluorescence microscopy. *J Med Microbiol* 2002;51(5):361-373.
25. Burgos R, Pich O, Ferrer Navarro M, Baseman J, Querol E, Pinol J. *Mycoplasma genitalium* P140 and P110 cytoadhesins reciprocally stabilize and required for cell adhesion and terminal organelle development. *J Bacteriol* 2006;188(24):8627-8637.
26. Opitz O, Jacobs E. Adherence epitopes of *Mycoplasma genitalium* adhesin. *Microbiology* 1992;138(9):1785-1790.