

## Construction and Stable Expression of a Truncated Human Receptor Tyrosine Kinase Ror1 (Ror1-ECD)

Flora Forouzesh<sup>1</sup>, Samira Shakeri Tabarian<sup>2</sup>, Shaghayegh Emami<sup>2</sup>, Mahmood-Jeddi Tehrani<sup>2</sup>,  
Reza Hadavi<sup>2\*</sup>, and Hodjattallah Rabbani<sup>2</sup>

1. Department of Biology, Science and Research Branch, Islamic Azad University, Tehran, Iran

2. Department of Antigen and Antibody Engineering, Monoclonal Antibody Research Center, Avicenna Research Institute, ACECR, Tehran, Iran

### Abstract

Expression of receptor tyrosine kinase Ror1 in a wide variety of cancers has emerged as a new era focusing on targeting this receptor in cancer therapy. Our preliminary results indicate the presence of a truncated transcript of Ror1 in tumor cells. The truncated Ror1 encompasses extracellular and transmembrane domains, lacking catalytic kinase domain (Ror1-ECD). As enzyme activity is highly dependent on the catalytic domain, we were wondering how this transcript and its encoded protein could play a possible role in tumorigenesis. To understand the function of this truncated transcript and whether or not the encoded protein translocates to the cell surface, we constructed a mammalian expression vector containing exon 1 to exon 8 of human Ror1 gene as a model system. The encoded protein by this construct covers the entire extracellular and transmembrane domains of Ror1. The Chinese Hamster Ovary Cell line (CHO) was used for transfection. Our results showed that this construct could express Ror1-ECD at protein level and also the protein could effectively translocate to the surface of transfected cells. Such model may suggest that a proportion of Ror1 molecules expressed by tumor cells are not full-length Ror1. This notion may be considered when applying flow cytometry using antibodies against Ror1 for screening of tumor cells in order to avoid any miscalculation in the number of Ror1 molecules expressed by tumor cells. Furthermore, such expression may bring about assumptions on functional roles of Ror1-ECD in tumorigenesis, which requires extensive functional studies.

*Avicenna J Med Biotech 2012; 4(1): 41-45*

**Keywords:** Cell line, Receptor tyrosine kinase, Gene expression

### Introduction

Receptor tyrosine kinases are critical signal-transduction mediators regulating essential cellular activities including growth, differentiation and migration, as well as survival and death<sup>(1)</sup>. Tyrosine kinase-like orphan receptors (Ror) are predominantly located in the plasma membrane<sup>(2)</sup>. The extracellular part of Ror proteins contains an immunoglobulin domain, a cysteine rich domain, also called a frizzled domain and a kringle domain<sup>(3-7)</sup>. Ror receptors possess a tyrosine kinase domain in their intracellular parts<sup>(8,9)</sup>. The human Ror1 gene is located on chromosome 1p31-p32 encoding a protein of 105 kDa<sup>(10-12)</sup>.

Others and we have recently reported expression of Ror1 in a variety of malignancies including acute lymphoblastic leukemia, Chronic Lymphocytic Leukemia (CLL), mantle cell lymphoma, marginal zone lymphoma, diffuse large

B-cell lymphoma, follicular lymphoma and also renal cancer<sup>(13-20)</sup>. The widespread expression of Ror1 in different malignancies with no expression in normal adult tissues makes it a suitable candidate for targeting the cancer cells. In an attempt to identify possible variants of Ror1, we isolated a transcript variant of Ror1 from blood of a CLL patient encompassing the extracellular and transmembrane domains lacking the kinase domain. Such variant has been reported at transcript level (GenBank locus NM-001083592) and protein level of 50 kDa band in patients with CLL<sup>(11)</sup>.

To understand the functional role of this isomer, we designed a construct containing exons 1-8 of Ror1 and transfected this construct into Chinese Hamster Ovary (CHO, CCL-61, ATCC) cell line. Here we describe establishment of a cell line stably expressing the extracellular part of human

Ror1 (Ror1-ECD) localized to cell membrane.

## Materials and Methods

### Vector construction

Ror1-ECD was PCR amplified using a human full-length cDNA clone EN1031\_D08 Ror1 gene (Origene Technologies, MD) as template and primers with appropriate restriction sites. A sense primer was GGTACCGCCACCATGCACCGGC CGCGCCGCCGC with *KpnI* restriction site plus KOZAK sequences (GCCACC) and an antisense primer was TCTAGACTACTTGGGTTTATATG ATTACAGC with *XbaI* restriction site plus TAG as a stop codon.

PCR was carried out in a 25  $\mu$ l reaction [1  $\mu$ l of template, 1  $\mu$ l of forward and reverse primers (10 pmol/ $\mu$ l), 1  $\mu$ l dNTPs (10 mM), 4 mM MgCl<sub>2</sub>, 2.5  $\mu$ l 10 $\times$ buffer, and 1 Unit Taq DNA polymerase (Invitrogen, USA)]. The mixture was heated to 95°C for 5 min and then amplified for 35 cycles: 94°C for 30 s, 64°C for 30 s and 72°C for 1 min. The PCR products were purified from 1.5% agarose gel and cloned into pGEM-T Easy Vector (Promega, USA). Several clones were selected and plasmids were prepared. Plasmids were digested with *KpnI* and *XbaI* restriction enzymes. The fragment was sub-cloned into pCMV6-Neo vector (Origene Technologies). Authenticity of the construct was verified by DNA sequencing. Recombinant plasmids were transformed and propagated in *Escherichia coli* (*E.coli*) JM109 (Promega). Plasmid Maxiprep was performed. For transfection the construct was linearized using *XmnI* restriction enzyme.

### Stable transfection of CHO cells

CHO cells were cultured in RPMI-1640 supplemented with 10% fetal bovine serum, streptomycin (100  $\mu$ g/ml) and penicillin (100 U/ml) (Invitrogen) at 37°C in a humid atmosphere with 5% CO<sub>2</sub>.

Then 10<sup>6</sup> CHO cells were seeded per each 6-well plate. After 24 hours 10  $\mu$ g of linearized plasmid containing the Ror1-ECD as well as pCMV6-Neo empty vector were transfected into CHO cells (with 50-70% confluency) using Polyplus transfection-jetPEI (Bioparc, France) according to the manufacturer's instructions. In transient transfection, proteins were analyzed at 48 hr after DNA introduction. To establish stable lines, CHO-transfected cells were treated with G418 (850  $\mu$ g/ml, Invitrogen). Stable transfectants were generated after 3 to 4 weeks post-transfection and cell

cloning was performed using limiting dilution method. Expanded clones were checked for expression of Ror1-ECD by Western blot and flow cytometry.

### Western blot

Transfected cells were prepared in lysis buffer [1% Nonidet P-40, 0.1% SDS, 1% sodium deoxycholate, 25 mM Tris-HCl, pH=7.2, 150 mM NaCl and 100  $\mu$ l/ml protease inhibitor cocktail (Sigma, MO)]. After 20 min, Insoluble material was removed by centrifugation (13000 rpm, 15 min) at 4°C. Concentration of protein was measured by BCA Protein Assay Kit (Thermo Fisher Scientific, Germany) following manufacturer's instructions. Twenty micrograms of protein was used for immunoblotting. Sample buffer (0.5 M Tris-HCl pH=6.8, 10% SDS, 0.5% bromophenol blue and 50% glycerol) was added to the lysate (1:4). Samples were boiled at 100 °C for 5 min, then loaded on a 10% SDS-PAGE<sup>(21)</sup>. Proteins were transferred to polyvinylidene fluoride (PVDF) membranes (Millipore Corp, MA)<sup>(22)</sup> and were blocked with PBS-0.1% Tween 20 buffer (PBS-T) plus 5% nonfat milk powder (blocking buffer) at room temperature for 1 hr.

The membranes were incubated for 1 hr at room temperature with a 0.2  $\mu$ g/ml goat anti human Ror1 antibody (R&D Systems, MN). After four times washing, the membranes were incubated with 1:2000 dilution of rabbit anti-goat-HRP conjugate (Dako Cytomation, Denmark). After thorough washing, bands were visualized by ECL reagent (GE Healthcare, Sweden) according to the manufacturer's instructions and the membranes were exposed to X-ray film.

### Cell surface flow cytometry

CHO-transfected and untransfected cells (1x10<sup>6</sup> cells/ml) were resuspended in FACS buffer (PBS, pH=7.2 and 0.1% sodium azide). Two  $\mu$ g/ml goat anti-human Ror1 antibody was added and the tubes were incubated on ice for 1 hr. Cells were washed three times in FACS buffer and incubated with a 1:100 dilution of rabbit anti-goat-FITC conjugate for 30 min at dark. After washing, fixation buffer (1% formaldehyde in PBS and 0.1% sodium azide) was added. The analyses were performed based on two negative controls. The mean value of fluorescence intensity of 10000 cells was determined by FACS, PAS system version 2.4e (Dako Cytomation). FlowMax software (Dako Cytomation) was used for analysis of data.

**Results**

Ror1-ECD was successfully cloned into pGEM-T easy vector by PCR (Figure 1A). Seven white colonies were selected for PCR screening of which all were positive (Figure 1B). Three selected positive colonies were subjected to double digestion using *KpnI* and *XbaI* restriction endonuclease. A representative experiment is shown in figure 1C. The excised Ror1-ECD fragment was ligated into pCMV6-Neo. The sequencing of two clones verified cloning of entire exons 1-8.

Western blot and flow cytometry techniques were used to verify the expression of Ror1-ECD construct. Expression of Ror1-ECD protein in transiently transfected cells was analyzed with anti-human Ror1 antibody. Two bands of ~55 and 60 *kDa* proteins were detected in CHO transfected cell lysate with no expression in control samples

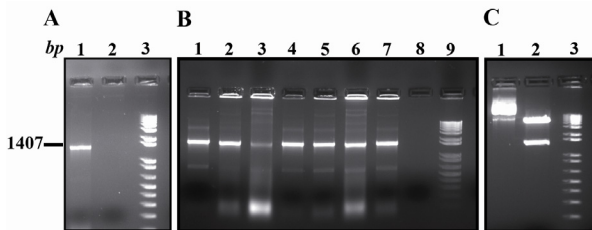


Figure 1. PCR amplification and cloning. A) Ror1-ECD PCR amplification (Lane 1). B) Colony PCR screening for identifying the recombinant clones (Lanes 1-7). C) Lane 1 is undigested and Lane 2 is *KpnI/XbaI* double digestion of a representative recombinant clone. The marker is 1 *kb* plus DNA ladder

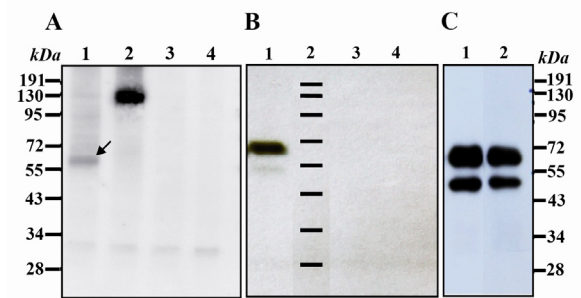


Figure 2. Western blot analysis using goat anti human Ror1 at non-reducing conditions. A) Lane 1: CHO cell line transiently transfected with Ror1-ECD construct. The arrow shows a weak band of around 60 *kDa*. Lane 2: CHO cells transfected with full-length Ror1 construct as a positive control. Lane 3: CHO-transfected with pCMV6-Neo empty vector. Lane 4: Untransfected CHO cells. B) Lane 1: cell lysate from a stable CHO transfected with Ror1-ECD. A weak band ~ 55*kDa* appears which may represent the unglycosylated variant. Lane 2: Protein marker. Lane 3: CHO transfected with pCMV6-Neo empty vector. Lane 4: Untransfected CHO cells. C) Two final clones obtained after cell cloning of stable transfectants. Lane 3: protein marker

confirming the integrity of the construct. The ~55 *kDa* band was much weaker than the 60 *kDa* band in transiently transfected cells (Figure 2A) in contrast to strong band in stably transfected CHO cells (Figure 2 B). Two final stable clones obtained expressing Ror1-ECD with similar pattern to transient cells (Figure 2C).

Cell surface expression of Ror1-ECD was determined by flow cytometry showing more than 98% positivity (Figure 3).

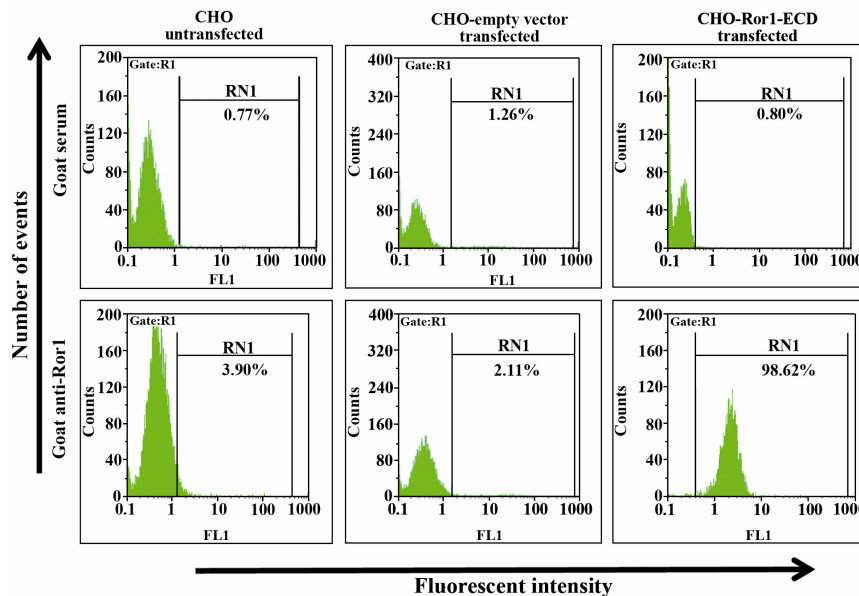


Figure 3. Cell surface staining of stably transfected CHO cells. Upper panel: Goat serum used as primary antibody. Lower panel: Goat anti-Ror1 polyclonal antibody used as primary antibody. The secondary antibody in all samples was FITC-conjugated anti-goat antibody

### Discussion

Baskar et al <sup>(11)</sup> demonstrated expression of a truncated Ror1-ECD as one single band of ~55 kDa in CLL tumor cells. Based on the molecular weight of this fragment as well as interaction of antibody (against extracellular domain of Ror1) we assumed that this fragment might only encompass the extracellular part of Ror1. To verify this hypothesis we expressed Ror1-ECD in CHO cells. The results showed a single weak band of 60 kDa in our transiently transfected cells (Figure 2A). The final stable lines showed two bands of 60 and ~55 kDa bands similar to what was reported by Baskar et al (Figures 2B and 2C). The 5 kDa difference in molecular weight might be due to post-translational modifications (mainly glycosylation) leading to a higher molecular weight, which is more potent to glycosylation in CHO cells (with normal origin) than tumor cells. Moreover, expression of such construct at protein level verifies the suitability of the selected strategy including adding the KOZAK consensus sequences at 5' site of start codon.

The successful surface expression of extracellular part of Ror1 lacking the kinase domain indicates that such structure may also be expressed on cell surface of leukemic cells from CLL patients as well as cells from other hematological malignancies. The translocation of expressed protein to the cell surface may imply that the 55 kDa fragment is also expressed in the surface of CLL cells <sup>(11)</sup>. Based on such data we may assume that some of the Ror1 molecules expressed on the surface of tumor cells might actually represent a truncated Ror1-ECD lacking kinase domain. This may bring up the question that what is the function of such truncated Ror1 in tumor cells. To address this question, further functional analyses are warranted.

### Conclusion

Ror1 is a receptor tyrosine kinase with an intracellular catalytic domain. All enzymatic activity of Ror1 depends on the kinase domain. Apparently, expression of the truncated Ror1 on the surface of tumor cells does not hamper the function of full-length Ror1 in its intracellular signaling as the cells are surviving. We assume that truncated Ror1 may have a synergist role in cell survival, increasing the importance of such variant in tumor development. Moreover, such structure may also play a role in non-pathologic conditions by inhibiting the signaling via adsorbing the Ror1 li-

gands, a notion to be considered. As such truncated structure includes the ligand binding domains may assist in binding to the ligands already exist in the extracellular matrix at *in vivo* conditions, assisting signaling in a ligand-dependent manner in association with the full-length Ror1. Furthermore, we may use this stable line as an immunogenic source for production of monoclonal antibodies against limited part of Ror1 for therapeutic purposes <sup>(23)</sup>.

### References

- Schlessinger J. Cell signaling by receptor tyrosine kinases. *Cell* 2000;103(2):211-225.
- Matsuda T, Nomi M, Ikeya M, Kani S, Oishi I, Terashima T, et al. Expression of the receptor tyrosine kinase genes, Ror1 and Ror2, during mouse development. *Mech Dev* 2001;105(1-2):153-156.
- Masiakowski P, Yancopoulos GD. The Wnt receptor CRD domain is also found in MuSK and related orphan receptor tyrosine kinases. *Curr Biol* 1998;8(12):R407.
- Oishi I, Takeuchi S, Hashimoto R, Nagabukuro A, Ueda T, Liu ZJ, et al. Spatio-temporally regulated expression of receptor tyrosine kinases, mRor1, mRor2, during mouse development: implications in development and function of the nervous system. *Genes Cells* 1999;4(1):41-56.
- Patthy L, Trexler M, Vali Z, Banyai L, Varadi A. Kringles: modules specialized for protein binding. Homology of the gelatin-binding region of fibronectin with the kringle structures of proteases. *FEBS Lett* 1984;171(1):131-136.
- Rehn M, Pihlajaniemi T, Hofmann K, Bucher P. The frizzled motif: in how many different protein families does it occur? *Trends Biochem Sci* 1998;23(11):415-417.
- Saldanha J, Singh J, Mahadevan D. Identification of a Frizzled-like cysteine rich domain in the extracellular region of developmental receptor tyrosine kinases. *Protein Sci* 1998;7(8):1632-1635.
- Masiakowski P, Carroll RD. A novel family of cell surface receptors with tyrosine kinase-like domain. *J Biol Chem* 1992;267(36):26181-26190.
- Yoda A, Oishi I, Minami Y. Expression and function of the Ror-family receptor tyrosine kinases during development: lessons from genetic analyses of nematodes, mice, and humans. *J Recept Signal Transduct Res* 2003;23(1):1-15.
- Forrester WC. The Ror receptor tyrosine kinase family. *Cell Mol Life Sci* 2002;59(1):83-96.
- Baskar S, Kwong KY, Hofer T, Levy JM, Kennedy MG, Lee E, et al. Unique cell surface expression of receptor tyrosine kinase ROR1 in human B-cell chronic lymphocytic leukemia. *Clin Cancer Res* 2008;14(2):396-404.
- Reddy UR, Phatak S, Allen C, Nycum LM, Sulman EP, White PS, et al. Localization of the human Ror1 gene (NTRKR1) to chromosome 1p31-p32 by fluorescence in situ hybridization and somatic cell hybrid analysis. *Genomics* 1997;41(2):283-285.

13. Klein U, Tu Y, Stolovitzky GA. Gene expression profiling of B cell chronic lymphocytic leukemia reveals a homogeneous phenotype related to memory B cells. *J Exp Med* 2001;194(11):1625-1638.
14. Rosenwald A, Alizadeh AA, Widhopf G, Simon R, Davis RE, Yu X, et al. Relation of gene expression phenotype to immunoglobulin mutation genotype in B cell chronic lymphocytic leukemia. *J Exp Med* 2001;194(11):1639-1647.
15. Shabani M, Asgarian-Omran H, Vossough P, Sharifian RA, Faranoush M, Ghragozlou S, et al. Expression profile of orphan receptor tyrosine kinase (ROR1) and Wilm's tumor gene 1 (WT1) in different subsets of B-cell acute lymphoblastic leukemia. *Leuk Lymphoma* 2008;49(7):1360-1367.
16. Shabani M, Asgarian-Omrani H, Jeddi-Tehrani M, Vossough P, Faranoush M, Sharifian RZ, et al. Overexpression of orphan receptor tyrosine kinase Ror1 as a putative tumor associated antigen in Iranian patients with acute lymphoblastic leukemia. *Tumor Biol* 2007;28(6):318-326.
17. Daneshmanesh AM, Mikaelsson E, Jeddi-Tehrani M, Bayat AA, Ghods R, Ostadkarampour M, et al. Ror1, a cell surface receptor tyrosine kinase is expressed in chronic lymphocytic leukemia and may serve as a putative target for therapy. *Int J Cancer* 2008;123(5):1190-1195.
18. Hudecek M, Schmitt TM, Baskar S, Lupo-Stanghellini MT, Nishida T, Yamamoto TN, et al. The B-cell tumor associated antigen ROR1 can be targeted with T cells modified to express a ROR1-specific chimeric antigen receptor. *Blood* 2010;116(22):4532-4541.
19. Barna G, Mihalik R, Timár B, Tömböl J, Csende Z, Sebestyén A, et al. ROR1 expression is not a unique marker of CLL. *Hematol Oncol* 2011;29(1):17-21.
20. Rabbani H, Ostadkarampour M, Danesh Manesh AH, Basiri A, Jeddi-Tehrani M, Forouzes F. Expression of ROR1 in patients with renal cancer-a potential diagnostic marker. *Iran Biomed J* 2010;14(3):77-82.
21. Laemmli UK. Cleavage of structural proteins during the assembly of the head of bacteriophage T4. *Nature* 1970;227(5259):680-685.
22. Towbin H, Staehelin T, Gordon H. Electrophoretic transfer of proteins from polyacrylamide gels to nitrocellulose sheets: procedure and some applications. *Proc Natl Acad Sci USA* 1979;76(9):4350-4354.
23. Yang J, Baskar S, Kwong KY, Kennedy MG, Wiestner A, Rader C. Therapeutic potential and challenges of targeting receptor tyrosine kinase ROR1 with monoclonal antibodies in B-cell malignancies. *PLoS One* 2011;6(6):e21018. Epub 2011 Jun 15.