

Human Tissue Plasminogen Activator Expression in *Escherichia coli* using Cytoplasmic and Periplasmic Cumulative Power

Keivan Majidzadeh-A^{1,2}, Fereidoun Mahboudi¹, Mahdi Hemayatkar¹, Fatemeh Davami¹, Farzaneh Barkhordary¹, Ahmad Adeli¹, Mohammad Soleimani³, Noushin Davoudi¹, and Vahid Khalaj^{1*}

1. Biotechnology Department, Biotechnology Research Center, Pasteur Institute of Iran, Tehran, Iran

2. Iranian Center for Breast Cancer (ICBC), ACECR, Tehran, Iran

3. Azad University, Qom, Iran

Abstract

Tissue plasminogen activator (tPA) is a serine protease, which is composed of five distinct structural domains with 17 disulfide bonds, representing a model of high-disulfide proteins in human body. One of the most important limitations for high yield heterologous protein production in *Escherichia coli* (*E. coli*) is the expression of complex proteins with multiple disulfide bridges. In this study the combination of two distinct strategies, manipulated cytoplasm and native periplasm, was applied to produce the functional full length tPA enzyme in *E. coli*. Using a PelB signal peptide sequence at 5' site of tPA gene, the expression cassette was prepared and subsequently was transformed into a strain with manipulated oxidizing cytoplasm. Then the induction was made to express the protein of interest. The SDS-PAGE analysis and gelatin hydrolysis confirmed the successful expression of functional tPA. The results of this study showed that complex proteins can be produced in *E. coli* using the cumulative power of both cytoplasm and periplasm.

Avicenna J Med Biotech 2010; 2(3): 131-136

Keywords: Cytoplasm, *Escherichia coli*, Periplasm, Proteins, Tissue Plasminogen Activator

Introduction

Tissue plasminogen activator (tPA) is a ~64 kDa serine protease that converts the plasminogen to plasmin, a serine protease of broad specificity that degrades the fibrin network in thrombi. tPA is composed of five distinct structural domains; a finger region, an epidermal growth factor-like sub-domain, two kringle domains, and finally, the catalytic domain. It is a 527-amino acid protein, with 35 cysteine residues that participate in formation of 17 disulfide bonds, representing a

model of high-disulfide proteins in human body^(1,2).

Prokaryotic systems such as *E.coli* have been the most widely used systems for the recombinant protein production. This is mainly due to genetic simplicity, fast growth rate, high cell density production and the availability of an increasingly large number of vectors and host strains⁽³⁻⁵⁾. One of the most important limitations for high yield heterologous protein production in *E. coli* is the

expression of complex proteins with multiple disulfide bridges. Among the several factors affecting the efficiency of such complex proteins production⁽⁶⁻⁹⁾, the reducing environment of cytoplasm seems to play a key role in improper folding of such high disulfide bonded proteins. The periplasm of *E.coli* is more oxidizing environment and in wild type bacteria is more suitable than cytoplasm for proper folding⁽³⁾.

There are two common *in vivo* approaches to improve the conformation of complex proteins in *E. coli*. The first is manipulating the condition of cytoplasm by converting its reducing nature into an oxidizing environment. In this approach the gene of interest, without the signal peptide encoding sequence is transformed into the engineered *E. coli* strain⁽¹⁰⁾. As a result, the recombinant protein maintains in oxidizing environment of cytoplasm and the proper conformation of the protein forms.

In the second approach, the secretion of the protein into the less reducing environment of periplasm is the main idea. To achieve this goal, the gene of interest containing a suitable signal peptide is introduced to the bacterial host and the signal peptide directs the protein into the periplasm.

The aim of this study was to investigate the potential of using a signal peptide for production of a highly disulfide bonded protein in an *E. coli* strain with engineered cytoplasm. So, for the first time, we have used both approaches by a simple method that can be improved in future studies. Using a signal peptide sequence at 5' site of tPA gene, the expression cassette was prepared and subsequently was transformed into a strain with manipulated oxidizing cytoplasm. In this way the protein of interest is produced in oxidizing environment of cytoplasm and the disulfide bonds would be formed to some extent. Then signal peptide transfers the produced protein into the periplasm where a greater amount of the disulfide bonds would be formed in less reducing environment of periplasm.

In this introductory study, tPA was cloned and expressed in an *E.coli* strain with oxidizing specialty. The expression and function of tPA were assayed by SDS-PAGE and Gelatin Hydrolysis test.

Materials and Methods

Strains, plasmids and culture media

Escherichia coli strain Top10 F' was used as the host for recombinant plasmid. Origami B (DE3) was used as expression host. pTZ57R (Fermentas, Vinius, Lithuania) as T/A cloning vector and pET22b as expression vector were used in experiments. pET22b is a bacterial vector with the size of 5.5 kb and contains PelB sequence for periplasmic localization. LB agar and Broth were used for culturing the strains.

PCR amplification and cloning of human tPA gene

Genomic DNA of CHO 1-15 cell line (ATCC- CRL 9606) transfected by full length cDNA of human tPA (GenBank accession number 101047), was used as template for PCR amplification. FortPA (5'-AACCATGG ATGCAATGAAGAGAGGGCTC -3') containing *NotI* restriction site and RevtPA (5'-GCGGCCGCTCACGGTCGCATGTTG -3') containing *NcoI* restriction site were used as forward and reverse primers, respectively. A high fidelity PCR reaction was set with following thermal cycles: 2 min at 95 °C for one cycle, and 30 cycles of 1 min at 95 °C, 45 sec at 68 °C, 2 min at 72 °C, and a final extension cycle of 10 min at 72 °C.

The resulting PCR product was tailed by an oligo A at 3' side and subsequently was cloned into the pTZ57R vector (Fermentas, Vinius, Lithuania), generating pTZ-tPA. Restriction mapping and bidirectional sequencing of cloned fragment was performed to confirm the construct. To prepare the final construct, tPA cloned fragment was cut from pTZ-tPA vector using *NotI* and *NcoI* enzymes and subsequently cloned into pET22b. The final construct was called pET/ tPA and confirmed by restriction analysis and sequencing.

Transformation of origami B (DE3) cells and expression of recombinant tPA

Competent cell preparation and transformation was done using standard Calcium chloride method. The transformed cells were cultured in LB Agar containing Tetracycline. For expression experiments, transformants were cultured in 5 ml LB broth and the induction was carried out by adding IPTG 1M at the optical density of 0.3 - 0.5 in 600 nm.

SDS-PAGE analysis and zymography test

Cell lysis and SDS-PAGE analysis on 12% polyacrylamide gels were performed according to standard methods ⁽¹¹⁾.

Zymography test was performed as described before ^(12, 13). Briefly, the protein samples were separated on a 11% non-reducing SDS-poly acrylamide gel containing appropriate amount of Plasminogen (Chromogenix, Italy) and Gelatin (Sigma, USA). After complete separation, the gel was soaked in 2.5% (w/v) Triton X-100 at room temperature for 1 hr to remove SDS and then incubated in 0.1 M glycine/ NaOH (pH= 8.3) for 5 hr at 37 °C. The gel (zymogram) was subsequently stained with Coomassie Brilliant Blue and the areas of digestion appeared as clear bands against a darkly stained background where the substrate has been degraded by the enzyme.

Results

Amplification and cloning of tPA cDNA

Human tPA cDNA was amplified by specific primers (Figure 1) and the resulting fragment was cloned into pTZ57R; successfully. Figure 2, lane 1 shows the result of restriction digestion of pTZ/ tPA by *NotI* and *NcoI* enzymes which created two fragments; the backbone of cloning vector (2.9 kb) and tPA fragment.

The size of expression construct (pET/tPA) was 7.2 kb and the restriction map of this construct using *NotI* and *NcoI* enzymes showed two fragments with expected sizes at 5.5 kb and 1.7 kb, confirming a successful sub-cloning of tPA gene into pET22b expression vector (Figure 3). Final sequencing of the construct confirmed the presence

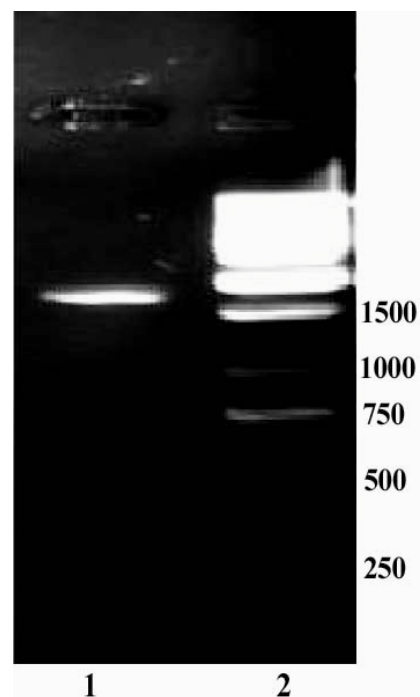


Figure 1. Amplification of tPA cDNA using genomic DNA of CHO 1-15 cell line. A specific band of ~1.7 kb was amplified (lane 1). Lane 2: size marker

and correct orientation of insert inside the vector (data not shown).

Expression of recombinant tPA

Expression of recombinant tPA was induced by addition of IPTG as described above. A

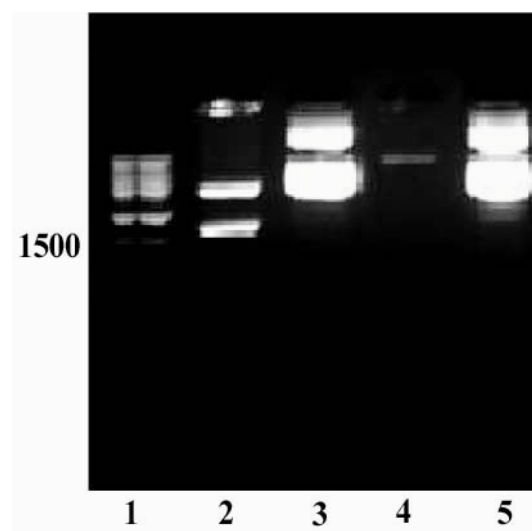


Figure 2. Restriction analysis of pTZ/tPA construct. Lane 1) Size marker. Lane 2) Fragments created by *NcoI/NotI* digestion of the construct; The backbone plasmid (2.9 kb) and tPA fragment (1.7 kb) are present. Lane 4) *NcoI/NotI* linearized pET22b plasmid. Lanes 3 and 5 represent undigested plasmids

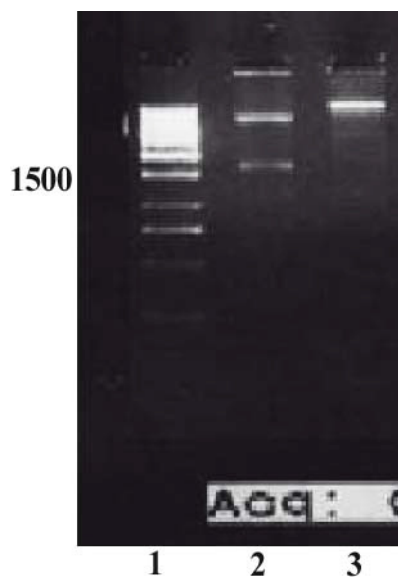


Figure 3. Restriction analysis of pET/tPA construct. Lane 2 shows two fragments created by NcoI/NotI digestion. The back bone plasmid, pET22b vector (5.5 kb), and tPA fragment (1.7 kb) are present. Lane 3 shows the undigested plasmid. Lane 1: Size marker

positive transformant was selected and was grown in LB medium until the cell optical density (OD, 600 nm) reached to 0.3-0.5.

Following induction, four hour- samples were taken and the lysates of induced and non-induced cells were compared in a standard SDS-Polyacrylamide gel (Figure 4). In figure 4, lanes 2 and 4 represent the expressed band of tPA in cell lysate of recombinant Origami B (DE3) after four hr of

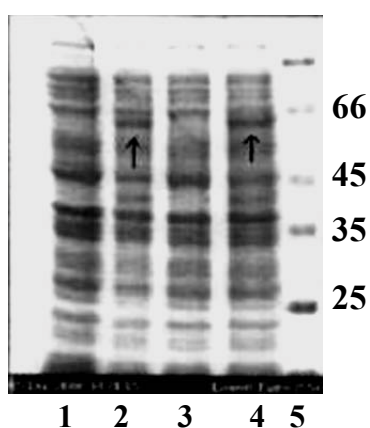


Figure 4. SDS-PAGE analysis of a recombinant clone producing tPA. Lanes 1 and 3 show the protein background of expression host before induction. Lanes 2 and 4 represent the expressed band of tPA in cell lysate of recombinant Origami B (DE3) after four hours of induction. Arrows indicate the bands related to recombinant tPA

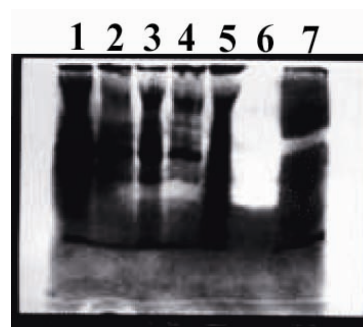


Figure 5. The cell lysate of transformed expression host before and after induction were applied to evaluate the activity and conformation of recombinant t-PA. Lane 7 shows the transparent band of cell lysate after induction, which indicated that the plasminogen is digested by serine-protease activity of t-PA and derived plasmin resulted in gelatin hydrolysis. Commercial t-PA (Actylase) was used as positive control (Lanes 6). Cell lysate of transformed expression host before induction (Lane 5) and negative colonies (Lanes 1-4) after induction were used as negative controls

induction (arrows). The band related to t-PA protein expressed by Origami B (DE3) transformant is shown by the arrow. Lanes 1 and 3 show the protein background of expression host before induction. The lack of expression in columns 1 and 3 shows a tight regulation of expression in pET22b vector. Lane 5 represents the molecular weight marker bands.

Gelatin hydrolysis test

In Zymography test, the plasminogen and gelatin were co-polymerized and immobilized with a non-reducing polyacrylamide gel. The cell lysate of transformed expression host before and after induction were applied to evaluate the activity and conformation of recombinant tPA (Figure 5). The transparent regions on the gel, which was observed only in transformed host (Lane 7 of Figure 5), indicated that the plasminogen is digested by serine-protease activity of t-PA and the derived plasmin resulted in gelatin hydrolysis. Commercial t-PA (Actylase) was used as positive control (Lane 6 of Figure 5). Cell lysate of transformed expression host before induction was used as negative control (Lanes 1-5 of Figure 5).

Discussion

Tissue plasminogen activator is an important enzyme for biotechnology industry due to

its extended application in medicine⁽¹⁴⁻¹⁶⁾. It is one of the most complex proteins in human body and currently is produced in CHO which is a mammalian host and so the production cost is very high⁽¹⁾. Attempts to produce active tPA in *Saccharomyces cerevisiae* or in insect cells have been frustrated by problems like hyperglycosylation, poor export, and improper folding⁽¹⁷⁻¹⁹⁾.

Due to its high growth rate, easy handling, low cost, and the availability of variety of strains and vectors, *E. coli* is a suitable host for recombinant production of target proteins.

In native strains of *E. coli* the condition of periplasm is more suitable for the expression of highly disulfide bonded proteins than cytoplasm of the cells. Although disulfide bond formation usually takes place in periplasmic space, tPA secreted in the periplasm of *E. coli* was misfolded and completely inactive in its primary trials⁽²⁰⁾.

The *E. coli* cytoplasm contains two thioredoxins, TrxA and TrxC, and three glutaredoxins. The oxidized form of these proteins can catalyze the formation of disulfide bonds in target peptides. In the cytosol, both the thioredoxins and the glutaredoxins are maintained in a reduced state by the action of thioredoxin reductase (TrxB) and glutathione, respectively⁽²¹⁾.

In a *trxB* null mutant, some disulfide bonded proteins such as alkaline phosphatase were expressed with proper folding and function⁽¹³⁾. The expression of disulfide bonded proteins was found to be even more efficient in double mutants defective cells in both thioredoxin (*trxB*) and glutathione (*gor* or *gshA*) pathways^(22,23).

In this study we used Origami B (DE3) cell, in which the cytoplasm is engineered through a double mutation in both thioredoxin and glutathione genes. Unlike the other reports, we have used an expression vector carrying a signal sequence. We hypothesized that the disulfide bond formation will partly take place during protein synthesis in suitable environment of origami B cytoplasm and, the remaining portion of disulfide bonds would

be formed by directing tPA molecules into the periplasmic space through signal peptide.

Gelatin hydrolysis test is a functional assay to show hydrolytic activity of the test protein. Using this assay, we showed that the expressed tPA is active.

Conclusion

Recombinant expression of a highly disulfide bonded protein, human t-PA, in *E. coli* was investigated in this study. As the functionality of t-PA is highly dependent on its proper folding and disulfide bond formation, it can be concluded that the application of two distinct strategies, manipulated cytoplasm and native periplasm would be an effective approach in recombinant production of complex proteins.

Acknowledgement

The authors would like to thank Dr. Behrouz Vaziri for his valuable comments. This work is financially supported by Pasteur Institute of Iran.

References

1. Pennica D, Holmes WE, Kohr WJ, Harkins RN, Vehar GA, Ward CA, et al. Cloning and expression of human tissue-type plasminogen activator cDNA in *E. coli*. *Nature* 1983;301(5897):214-221.
2. van Zonneveld AJ, Veerman H, MacDonald ME, Pannekoek H, van Mourik JA. Structure and function of human tissue-type plasminogen activator (t-PA). *J Cell Biochem* 1986;32(3):169-178.
3. Gasser B, Saloheimo M, Rinas U, Dragosits M, Carmona ER, Baumann K, Giuliani M, et al. Protein folding and conformational stress in microbial cells producing recombinant protein: a host comparative overview. *Microb Cell Fact* 2008;7:11.
4. Verma R, Boleti E, George AJT. Antibody engineering: comparison of bacterial, yeast, insect and mammalian expression systems. *J Immunol Methods* 1998;216(1-2):165-181.
5. Baneyx F. Recombinant protein expression in *Escherichia coli*. *Curr Opin Biotechnol* 1999;10(5):411-421.
6. Bardwell JC, McGovern K, Beckwith J. Identification of a protein required for disulfide bond formation in vivo. *Cell* 1991;67(3):581-589.
7. Kamitani S, Akiyama Y, Ito K. Identification and

- characterization of an *Escherichia coli* gene required for the formation of correctly folded alkaline phosphatase, a periplasmic enzyme. *EMBO J* 1992; 11(1):57-62.
8. Peek JA, Taylor RK. Characterization of a periplasmic thiol: disulfide interchange protein required for the functional maturation of secreted virulence factors of *Vibrio cholerae*. *Proc Natl Acad Sci USA* 1992;89(13):6210-6214.
 9. Hua Q, Yang C, Oshima T, Mori H, Shimizu K. Analysis of gene expression in *Escherichia coli* in response to changes of growth-limiting nutrient in chemostat cultures. *Appl Environ Microbiol* 2004; 70(4):2354-2366.
 10. Mattes R. The production of improved tissue-type plasminogen activator in *Escherichia coli*. *Semin Thromb Hemost* 2001;27(4):325-336.
 11. Ausubel FM. *Current protocols in molecular biology*. New York: John Wiley & Sons; 1987.
 12. Snoek-van Beurden PA, Von den Hoff JW. Zymographic techniques for the analysis of matrix metalloproteinases and their inhibitors. *Biotechniques* 2005;38(1):73-83.
 13. Soleimani M, Mahboudi F, Davoudi N, Amanzadeh A, Azizi M, Adeli A, et al. Expression of human tissue plasminogen activator in the trypanosomatid protozoan *Leishmania tarentolae*. *Biotechnol Appl Biochem* 2007;48(Pt 1):55-61.
 14. Bergmann SR, Fox KA, Ter-Pogossian MM, Sobel BE, Collen D. Clot-selective coronary thrombolysis with tissue-type plasminogen activator. *Science* 1983;220(4602):1181-1183.
 15. Van de Werf F, Bergmann SR, Fox KA, de Geest H, Hoyng CF, Sobel BE, et al. Coronary thrombolysis with intravenously administered human tissue-type plasminogen activator produced by recombinant DNA technology. *Circulation* 1984;69(3): 605-610.
 16. Van de Werf F, Ludbrook PA, Bergmann SR, Tiefenbrunn AJ, Fox KAA, de Geest H, et al. Coronary thrombolysis with tissue-type plasminogen activator in patients with evolving myocardial infarction. *N Engl J Med* 1984;310(10): 609-613.
 17. Martegani E, Forlani N, Mauri I, Porro D, Schleuning WD, Alberghina L. Expression of high levels of human tissue plasminogen activator in yeast under the control of an inducible GAL promoter. *Appl Microbiol Biotechnol* 1992;37(5): 604-608.
 18. Furlong AM, Thomsen DR, Marotti KR, Post LE, Sharma SK. Active human tissue plasminogen activator secreted from insect cells using a baculovirus vector. *Biotechnol Appl Biochem* 1988;10(5): 454-464.
 19. Steiner H, Pohl G, Gunne H, Hellers M, Elhammer A, Hansson L. Human tissue-type plasminogen activator synthesized by using a baculovirus vector in insect cells compared with human plasminogen activator produced in mouse cells. *Gene* 1988;73 (2):449-457.
 20. Nakamoto H, Bardwell JC. Catalysis of disulfide bond formation and isomerization in the *Escherichia coli* periplasm. *Biochim et Biophysica Acta* 2004;1694(1-3):111-119.
 21. Aslund F, Beckwith J. The thioredoxin superfamily: redundancy, specificity, and gray-area genomics. *J Bacteriol* 1999;181(5):1375-1379.
 22. Bessette PH, Aslund F, Beckwith J, Georgiou G. Efficient folding of proteins with multiple disulfide bonds in the *Escherichia coli* cytoplasm. *Proc Natl Acad Sci USA* 1999;96(24):13703-13708.
 23. Stewart EJ, Aslund F, Beckwith J. Disulfide bond formation in the *Escherichia coli* cytoplasm: an in vivo role reversal for the thioredoxins. *EMBO J* 1998;17(19):5543-5550.