

The Effect of *TAX-1* Gene of Human T-cell Leukemia Virus Type-1 on the Expression of CCR5 in K562 Cell Line

Nasrin Haghazari Sadaghiani, Lila Pirayeshfard, Afsaneh Aghaie, and Zohreh Sharifi *

Blood Transfusion Research Center, High Institute for Research and Education in Transfusion Medicine, Tehran, Iran

Abstract

Background: Tax-1 protein of Human T-cell Leukemia Virus type 1 (HTLV-1) serves as a key transcriptional regulatory gene product and has a crucial role in transactivating genes of infected cells by employing their transcriptional factors. This modulation includes induction of genes which encode CC-chemokines and their receptors. In this study, a recombinant vector containing Tax-1 gene was made and tested for its ability to induce CCR5 (CC chemokine receptor 5) expression in K562 cell line.

Methods: In order to perform this research, two blood samples of HTLV-1 positive were obtained from Urmia blood transfusion center. After DNA extraction, a complete sequence of *Tax-1* gene was amplified by specific primers. Recombinant vectors carrying *Tax-1* gene were synthesized and transformed into *Escherichia coli* (*E. coli*). After bacteria transformation, bacteria containing recombinant plasmid were selected and purified. Then, the recombinant shuttle vectors, *pCDNA3.1-TAX*, were transfected into the cell culture (K562 cell line). Expression of *CCR5* was measured after 72 hr by Syber Green Real-Time PCR method compared to control cell culture. Normalization was done with GAPDH as a standard gene.

Results: Cloning of *Tax-1* gene in the vector, *pCDNA3.1* was confirmed by colony PCR, restriction digestion, and sequencing methods. Expression of *Tax-1* and *CCR5* genes were confirmed by real time PCR and also, expression of *CCR5* gene showed an 8-fold increase in comparison to mock-treated controls ($p < 0.05$).

Conclusion: Our data suggested that recombinant Tax-1 may have the enhancing effect on CCR5 expression rate at mRNA levels in K562 cell line. Further studies are necessary to evaluate the effect of *pCDNA3.1-TAX* on cell surface CCR5 expression.

Avicenna J Med Biotech 2019; 11(1): 67-71

Keywords: CCR5, Human T-cell Leukemia Virus, Tax-1 protein

Introduction

Human T-cell Leukemia Virus (HTLV-1) is the first discovered human retrovirus in 1980. It was isolated from a patient with cutaneous T-cell lymphoma¹. Worldwide distribution of infected individuals has suggested that 15 to 20 million people are infected with HTLV². Africa, southern Japan, Caribbean, Central and South America and the Middle East are the endemic areas for this infection. It is the etiological agent of Adult T-cell Leukemia/Lymphoma (ATL) and HTLV-1 Associated Myelopathy/Tropical Spastic Paraparesis (HAM/TSP)³. However, only about 1-5% of infected patients are thought to develop cancer as a result of the infection with HTLV-1 over their lifetimes². Infection is possible through sexual contact, transfusion of contaminated blood products, and from mother to child *via* breastfeeding⁴. Entry of HTLV-1 into the CD4+ T-cells occurs through a ubiquitous cell surface transporter called Glucose Transporter 1 (GLUT1)⁵, which

is present on a wide range of cell types; however, they have a preferential tropism for CD4+ T-cells⁶.

HTLV-1 belongs to retroviridae family and therefore, shares similar transmission modes with the other member, HIV-1, thus, both can be found in a host in endemic areas⁷. Human retroviruses have the worldwide distribution but because of the lack of HTLV screening in most of the countries, its coinfection rate with HIV-1 has been underestimated. HTLV-1 and HIV-1 both infect CD4+ T-cells but have different outcomes on the same cell type. In spite of the long-lasting history of investigation of HTLV-1/HIV-1 coinfection, whether HTLV-1 can accelerate or attenuate HIV-1 infection has not been completely clarified as yet. Studies of clinical outcomes of the coinfection show conflicting results⁸. What accounts for most of HTLV-1 influence on a host cell is Tax-1. Tax-1 is the oncogenic transactivator agent of HTLV-1 which caus-

* **Corresponding author:**
Zohreh Sharifi, Ph.D., Blood Transfusion Research Center, High Institute for Research and Education in Transfusion Medicine, Tehran, Iran
Tel: +98 21 82052151
Fax: +98 21 88601555
E-mail: z.sharifi@ibto.ir
Received: 26 Nov 2017
Accepted: 8 Jan 2018

es several changes to an infected cell by modulating the transcription factors and pathways and shifting the mechanisms in favor of the virus replication⁹. Furthermore, an important role was suggested for Tax-1 in a clinical and immunological manifestation of the HIV/HTLV coinfection¹⁰. Tax-1 may have the capability to increase CCR5 expression in the Tax-1 transfected cell line.

Previous studies on this subject have had conflicting results of the effect of Tax-1 on CCR5 expression^{11,12}. In this study, the effect of Tax-1 on CCR5 expression in K562 cell line was investigated.

Materials and Methods

DNA purification and amplification

In order to isolate genomic DNA, two blood samples of HTLV-1 positive were obtained from Urmia blood transfusion center. DNA extraction was performed according to the method of extraction kit protocol (Yekta Tajhiz, Iran). Specific primers were designed using NCBI/Primer-Blast for the complete length of *Tax-1* gene in the NCBI nucleotide database as follows: A forward primer containing a restriction enzyme site of *HindIII* 5'ATAAGCTTATGGCCCACTTCCCAGGGTT3' and reverse primer containing a restriction site of *EcoRI* 5'TAGAATTCTCATCATCTGCCTCTTTTTCGTT3' with an amplicon size of 890 base pairs. The PCR amplification kit (TaKaRa bio kit, USA) is used in a total volume of 50 μ l containing 25 μ l of the master mix, 1 μ l of isolated DNA and 1 μ l of each primer (10 μ M). PCR condition included a primary denaturation step of 5 min at 95°C followed by 35 cycles of 45 s at 95°C, 30 s at 58°C, and 45 s at 72°C and a final extension step at 72°C for 10 min using Palm cycler (Corbett, USA).

Recombinant DNA construction

In order to construct the recombinant DNA, *PcDNA3.1* plasmid was used as the vector. The *PcDNA3.1* plasmid was purified using a plasmid DNA mini-prep system (Viogene, USA) from the bacterial culture containing the plasmids stored in glycerol stock according to the supplier's instructions. PCR products and the vectors were digested by *EcoRI* and *Hind III* producing sticky ends and ligation was done by T4 ligase overnight to yield in the recombinant *PcDNA3.1-Tax-1* plasmid. In order to make competent *Escherichia coli* (*E. coli*), the *TGI* bacterial culture was treated with CaCl₂ 100 mM solution. Transformation of the *TGI* culture with the recombinant vector was done with heat shock method. For confirmation of the recombinant *PcDNA3.1-Tax-1* plasmid, colony PCR was done to evaluate cloning. The accuracy of the recombinant *PcDNA3.1-Tax-1* plasmid was evaluated by DNA sequencing.

Cell line transfection

K562 cell line was used as a myeloid cell line competent of producing CCR5 naturally. Cells were cul-

tured in an RPMI medium with 10% FBS and 1% penicillin/streptomycin. Transfection was done with *PcDNA3.1-Tax-1* plasmids using XtremeGene Transfection kit (Roche, Germany) according to the manufacturer's protocol. As a control, K562s were transfected with *PcDNA3.1* without the insert.

Total RNA extraction and cDNA synthesis

Total RNA was extracted with RNA extraction kit (Yekta Tajhiz Azma, Iran) from cell culture after 72 hr of transfection. cDNAs were generated using cDNA synthesizer kit (Invitrogen, USA) according to the manufacturer's protocol.

Quantitative real-time PCR

To indicate the level of the *Tax-1* and *CCR5* genes expression, quantitative real-time PCR was performed on cDNA samples using previously mentioned *Tax-1* primers and *CCR5* specific primers which are as follows: Forward primer: 5'CAAAAAGAAGGTCTTCA TTACACC3' and reverse primer: 5'CCTGTGCCTCT TCTTCTCATTTCG3'¹³. In order to determine the optimal annealing temperature, thermal gradient series of PCR were performed and 58°C was determined as the proper annealing temperature for both *CCR5* and *Tax-1* genes. Quantitative real time PCR was performed using Syber Green qPCR master mix (Ampliqon, Denmark) with real-time PCR (Rotor-Gene, Q USA). PCR condition was a primary denaturation and enzyme activation step of 1 cycle of 15 min at 95°C which was followed by 40 cycles of amplification including a denaturation step of 45 s at 95°C, a 30 s at 58°C for annealing and a 45 s at 72°C for extension and a final cooling step of 30 s at 40°C. In order to control the specificity of the amplification products, a melting curve was generated with a temperature ramp from 60°C to 95°C at a rate of 0.01°C/s. Normalization was done with the internal control, *GAPDH* gene. Relative expression of each gene was calculated with the comparative $\Delta\Delta$ Ct method¹⁴, in which Δ Ct=Ct (Tax-1 or CCR5)-Ct (GAPDH). The $\Delta\Delta$ Ct method was used to find the difference between the mean value of the Δ Ct of the transfected group and the mean value of the Δ Ct of the control group ($\Delta\Delta$ Ct = Δ Ct_{transfected} - Δ Ct_{control}) for each analyzed molecule. Fold changes in the expression of target mRNA was calculated as 2^{- $\Delta\Delta$ Ct}. PCR efficiency for the gene of interest and for internal control must be similar which allows us to use the comparative Ct method. To determine the efficiency, tenfold dilution series were prepared for Tax-1 and CCR5 cDNAs and after real time PCR, a standard curve was established by plotting the logarithm of copy numbers in dilutions against the Δ Ct values. The difference in PCR efficiency was determined by calculating the slope of the line.

Results

Amplification of the *Tax-1* gene

PCR products were electrophoresed on gel agarose

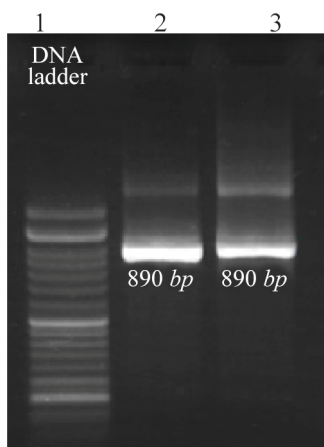


Figure 1. Agarose gel electrophoresis of PCR products of HTLV-1 positive samples. Line 1, 100 bp DNA ladder. Lines 2 and 3, 890-bp PCR fragments of amplified *Tax-1* gene.

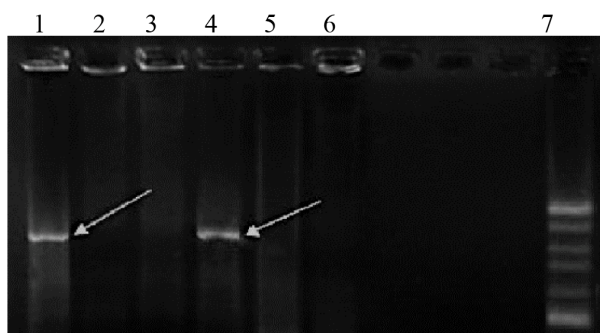


Figure 2. Agarose gel electrophoresis of colony PCR results of the selected clones containing recombinant plasmid *PcDNA3.1-Tax-1*. Lines 1 and 5, PCR products of the recombinant plasmid containing *Tax-1* genes with an 890-bp fragment. Lines 2, 3 and 6, PCR products of plasmid *PcDNA3.1* without the insert. Line 7, 100 bp DNA ladder.

and according to the 100 bp DNA ladder, an 890-bp PCR fragment was amplified (Figure 1).

Confirmation of recombinant vector *PcDNA3.1-Tax-1*

After colony PCR, products were electrophoresed on gel agarose and a fragment of about 890 base pairs was amplified using *Tax*-specific primers (Figure 2).

Also, the recombinant plasmid *PcDNA3.1-Tax-1* was digested with *EcoRI* and *Hind III* restriction enzymes that resulted in two fragments *PcDNA3.1*, 5428-bp, and *Tax-1*, 890-bp (Figure 3).

The result of DNA sequencing showed that this isolate had 99% similarity with *Tax-1* gene of the HTLV-1 virus with the accession number KF797883.1.

Analyzing real time PCR results after 72 hr of transfection with recombinant plasmid *PcDNA3.1-Tax-1* indicated the expression of *Tax-1* gene in comparison to the control group ($p < 0.001$). After confirmation of *Tax-1* gene expression in transfected cell line K562, samples were subjected to quantitative real time PCR to determine the effect of *Tax-1* on CCR5 expression (Figure 4). According to the relative expression results

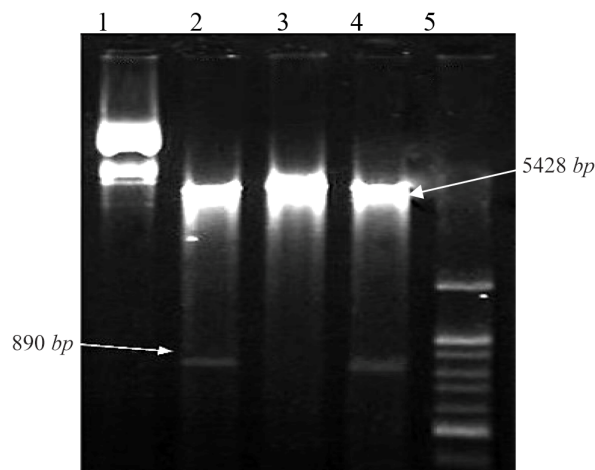


Figure 3. Agarose gel electrophoresis of double digestion of recombinant plasmid *PcDNA3.1-Tax-1* containing *Tax-1* gene. Lines 1 and 3, undigested recombinant plasmid *PcDNA3.1-Tax-1*. Lines 2 and 4, recombinant plasmid *PcDNA3.1-Tax-1* that was digested with *HindIII* and *EcoRI* enzymes with two fragments (*PcDNA3.1*, 5428-bp, and *Tax-1*, 890-bp). Line 5, 100 bp DNA ladder.

which were analyzed by a Relative Expression Software Tool (REST) and $\Delta\Delta Ct$ method, there is an over-expression rate of 8 fold in CCR5 expression in comparison to mock-treated group ($p < 0.001$).

Discussion

HTLV-1 is one of the viruses with an incubation period of 10 to 40 years and in most of the patients, it has no manifestation during their lifetime, thus, patients in endemic areas with high risk behaviors are prone to coinfections with HIV-1¹⁰. Although there has been a significant number of investigations on HTLV-1 infection throughout more than a quarter of a century, HTLV-1 significance in coinfection with HIV-1 has been underestimated due to lack of screening in most of the endemic areas¹⁰. There have been reports of both enhancement and attenuation of HIV-1 replication in cases of coinfections with HTLV-1¹⁵⁻²⁰. Presence of HTLV-1 in the host can increase the chance of HIV-1 to get into the cells and therefore increasing the chance of HIV-1 infection. HTLV-1 has a transactivator agent named *Tax-1*, which can cause a series of transformations into the host cell. One of the modifications which is of importance in HTLV-1/HIV-1 coinfection is the modulation of CCR5 expression rate which is one of the co-receptors helping HIV-1's entry into the cells²¹.

There have been a few publications about the effect of *Tax-1* gene on CCR5 expression rate. In a study, it was shown that a higher percentage of classical monocytes subset (CD14⁺ and CD16⁻) expressed chemokine receptor CCR5 among infected individuals with HTLV-1 in comparison to uninfected individuals²².

In another study, when healthy PBMC cultures were treated with different doses of *Tax-1* protein, there was

The Effect of *TAX-1* Gene of Human T-cell Leukemia Virus Type -1 on the Expression of CCR5

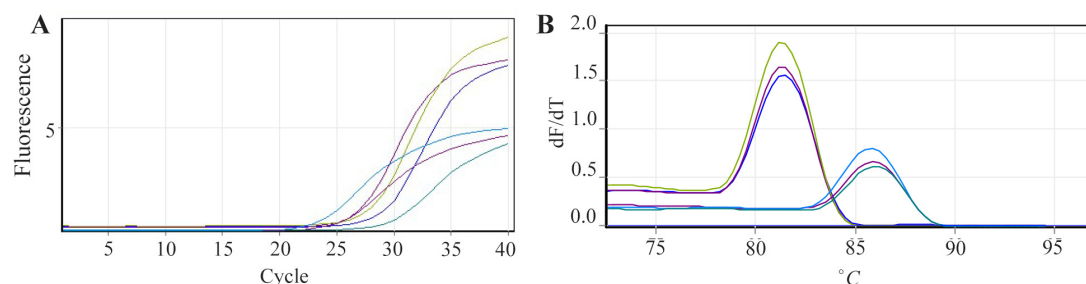


Figure 4. A) Amplification curves and; B) melt curve analysis of *CCR5* and *GAPDH* genes as target and control genes, respectively revealed melting peaks at 86°C for *CCR5* gene and 83°C for *GAPDH* gene and the representative amplification with gene specific primers.

an increase in CC-chemokines such as CCL3, CCL4, and CCL5 and a reduction in the percentage of CCR5-positive cells compared to mock-treated lymphocytes which were evaluated by flow cytometry¹¹.

Studies showed that Tax1 protein is a potent transactivator that regulates the expression of several cellular genes involved in cellular activation, proliferation, and transformation. For example, Tax-1 has been shown to be a relatively weak activator of the CXCR4 promoter²³. Also, in Twizere *et al*'s study, it was reported that Tax-1 would induce the expression of several proteins, including cytokines and chemokines after infection of T-cell by HTLV-1. But Tax-1 expression in primary T lymphocytes did not result in altered cell surface expression of CXCR4 in comparison with control cells and they demonstrated that Tax-1 could modify the binding properties of the CXCR4 chemokine receptor and induce CXCR4 receptor activation²⁴.

A possible explanation for the discrepancy of this study with previous studies can be due to evaluation of CCR5 expression rate by real time PCR which is an accurate and sensitive method for quantifying gene transcription. In this research, the expression of CCR5 gene was calculated at a transcriptional level without measuring cell surface CCR5 expression and the possible interaction with others proteins such as CC-chemokines or quantifying CC-chemokines expression.

The CCR5 expression is regulated at three levels: (a) genetic factors; (b) factors involved in activation, signaling, and trafficking of the receptors and; (c) environmental or other triggers²⁵. The CCR5 expression is mainly affected by the binding of its ligand; however, studying the direct effect of *Tax-1* protein as a transactivator on the CCR5 promoter and expression rate can be useful. It is reported that CCR5 expression rate increased autocrine effect of MIP1 β expression which was induced by mitogens in a *tax-1* transfected cell line¹². Furthermore, the rate of expression of the recombinant *PcDNA3.1-Tax-1* plasmid and required time for its uptake by K562 cell line should be considered.

Conclusion

Our data suggested that recombinant *Tax-1* may

have the enhancing effect on CCR5 expression rate at mRNA levels in K562 cell line. Further studies are necessary to evaluate the effect of *pCDNA3.1-TAX* on cell surface CCR5 expression.

Acknowledgement

This study has been fulfilled with the financial support of the High Institute for Research and Education in Transfusion Medicine, Blood Transfusion Research Center. We gratefully acknowledge the advice and technical support of the staff of Blood Transfusion Research Centre who contributed to this work.

Conflict of Interest

None of the authors have any conflicts of interest to declare.

References

1. Gallo RC. The discovery of the first human retrovirus: HTLV-1 and HTLV-2. *Retrovirology* 2005;2:17.
2. Gessain A, Cassar O. Epidemiological aspects and world distribution of HTLV-1 infection. *Front Microbiol* 2012; 3:388.
3. Giam CZ, Jeang KT. HTLV-1 Tax and adult T-cell leukemia. *Front Biosci* 2007;12:1496-1507.
4. Clark J, Saxinger C, Gibbs WN, Lofters W, Lagranade L, Deceulaer K, et al. Seroepidemiologic studies of human T-cell leukemia/lymphoma virus type I in Jamaica. *Int J Cancer* 1985;36(1):37-41.
5. Yasunaga J, Matsuoka M. Molecular mechanisms of HTLV-1 infection and pathogenesis. *Int J Hematol* 2011; 94(5):435-442.
6. Verdonck K, Gonzalez E, Van Dooren S, Vandamme AM, Vanham G, Gotuzzo E. Human T-lymphotropic virus 1: recent knowledge about an ancient infection. *Lancet Infect Dis* 2007;7(4):266-281.
7. Pilotti E, Bianchi MV, De Maria A, Bozzano F, Romanelli MG, Bertazzoni U, et al. HTLV-1/-2 and HIV-1 co-infections: retroviral interference on host immune status. *Front Microbiol* 2013;4:372.
8. Casoli C, Pilotti E, Bertazzoni U. Molecular and cellular interactions of HIV-1/HTLV coinfection and impact on AIDS progression. *AIDS Rev* 2007;9(3):140-149.

9. Grassmann R, Aboud M, Jeang K-T. Molecular mechanisms of cellular transformation by HTLV-1 Tax. *Oncogene* 2005;24(39):5976-5985.
10. Beilke MA. Retroviral coinfections: HIV and HTLV: taking stock of more than a quarter century of research. *AIDS Res Hum Retroviruses* 2012;28(2):139-147.
11. Barrios CS, Abuerreish M, Lairmore MD, Castillo L, Giam CZ, Beilke MA. Recombinant human T-cell leukemia virus types 1 and 2 Tax proteins induce high levels of CC-chemokines and downregulate CCR5 in human peripheral blood mononuclear cells. *Viral Immunol* 2011;24(6):429-439.
12. Sharma V, Lorey SL. Autocrine role of macrophage inflammatory protein-1 beta in human T-cell lymphotropic virus type-1 tax-transfected Jurkat T-cells. *Biochem Biophys Res Commun* 2001;287(4):910-913.
13. Woitas R P, Ahlenstiel G, Iwan A, Rockstroh JK, Brackmann HH, Kupfer B, et al. Frequency of the HIV-protective CC chemokine receptor 5-delta32/delta32 genotype is increased in hepatitis C. *Gastroenterology* 2002;122(7):1721-1728.
14. Pfaffl MW. A new mathematical model for relative quantification in real-time RT-PCR. *Nucleic Acids Res* 2001;29(9):e45.
15. Brites C, Alencar R, Gusmao R, Pedroso C, Netto EM, Pedral-Sampaio D, et al. Co-infection with HTLV-1 is associated with a shorter survival time for HIV-1-infected patients in Bahia, Brazil. *AIDS* 2001;15(15):2053-2055.
16. Pedroso C, Netto EM, Weyll N, Brites C. Coinfection by HIV-1 and human lymphotropic virus type 1 in Brazilian children is strongly associated with a shorter survival time. *J Acquir Immune Defic Syndr* 2011;57 Suppl 3: S208-211.
17. Tulus Silva M, de Melo Espindola O, Bezerra Leite AC, Araujo A. Neurological aspects of HIV/human T lymphotropic virus coinfection. *AIDS Rev* 2009;11(2):71-78.
18. Beilke MA, Theall KP, O'Brien M, Clayton JL, Benjamin SM, Winsor EL, et al. Clinical outcomes and disease progression among patients coinfecting with HIV and human T lymphotropic virus types 1 and 2. *Clin Infect Dis* 2004;39(2):256-263.
19. Chavance M, Neisson-Vernant C, Quist D, Monplaisir N, Armengaud B, Chout R. HIV/HTLV-I coinfection and clinical grade at diagnosis. *J Acquir Immune Defic Syndr Hum Retrovirol* 1995;8(1):91-95.
20. Shibata D, Brynes RK, Rabinowitz A, Hanson CA, Slovak ML, Spira TJ, et al. Human T-cell lymphotropic virus type I (HTLV-I)-associated adult T-cell leukemia-lymphoma in a patient infected with human immunodeficiency virus type 1 (HIV-1). *Ann Intern Med* 1989;111(11):871-875.
21. Lasky LA, Nakamura G, Smith DH, Fennie C, Shimasaki C, Patzer E, et al. Delineation of a region of the human immunodeficiency virus type 1 gp120 glycoprotein critical for interaction with the CD4 receptor. *Cell* 1987;50(6):975-985.
22. de Castro-Amarante MF, Pise-Masison CA, McKinnon K, Washington Parks R, Galli V, Omsland M, et al. Human T cell leukemia virus type 1 infection of the three monocyte subsets contributes to viral burden in humans. *J Virol* 2016;90(5):2195-2207.
23. Moriuchi M, Moriuchi H, Fauci AS. HTLV type I Tax activation of the CXCR4 promoter by association with nuclear respiratory factor 1. *AIDS Res Hum Retroviruses* 1999;15(9):821-827.
24. Twizere JC, Springael JY, Boxus M, Burny A, Dequiedt F, Dewulf JF, et al. Human T-cell leukemia virus type-1 Tax oncoprotein regulates G-protein signaling. *Blood* 2007;109(3):1051-1060.
25. Barmania F, Pepper MS. C-C chemokine receptor type five (CCR5): an emerging target for the control of HIV infection. *Appl Transl Genom* 2013;2:3-16.