

Fetal Sex Determination using Non-Invasive Method of Cell-free Fetal DNA in Maternal Plasma of Pregnant Women During 6th – 10th Weeks of Gestation

Maryam Zargari ¹, Mohammad Reza Sadeghi ², Mohammad Hassan Shahhosseiny ³, Koroush Kamali ⁴, Kyomars Saliminejad ⁴, Ali Esmailzadeh ⁴, and Hamid Reza Khorram Khorshid ^{4,5*}

1. Biology Department, Science and Research Branch, Islamic Azad University (IAU), Tehran, Iran

2. Reproductive Biotechnology Research Centre, Avicenna Research Institute, ACECR, Tehran, Iran

3. Microbiology Department, Shahr-e-Qods Branch, Islamic Azad University (IAU), Tehran, Iran

4. Reproductive Biotechnology Research Centre, Avicenna Research Institute, ACECR, Tehran, Iran

5. Genetic Research Centre, University of Social Welfare and Rehabilitation Sciences, Tehran, Iran

Abstract

In previous years, identification of fetal cells in maternal blood circulation has caused a new revolution in non-invasive method of prenatal diagnosis. Low number of fetal cells in maternal blood and long-term survival after pregnancy limited the use of fetal cells in diagnostic and clinical applications. With the discovery of cell-free fetal DNA (cffDNA) in plasma of pregnant women, access to genetic material of the fetus had become possible to determine early gender of a fetus in pregnancies at the risk of X-linked genetic conditions instead of applying invasive methods. Therefore in this study, the probability of detecting sequences on the Y chromosome in pregnant women has been evaluated to identify the gender of fetuses. Peripheral blood samples were obtained from 80 pregnant women at 6th to 10th weeks of gestation and then the fetal DNA was extracted from the plasma. Nested PCR was applied to detect the sequences of single copy *SRY* gene and multi copy *DYS14* & *DAZ* genes on the Y chromosome of the male fetuses. At the end, all the obtained results were compared with the actual gender of the newborns. In 40 out of 42 born baby boys, the relevant gene sequences were identified and 95.2% sensitivity was obtained. Non-invasive early determination of fetal gender using cffDNA could be employed as a pre-test in the shortest possible time and with a high reliability to avoid applying invasive methods in cases where a fetus is at the risk of genetic diseases.

Avicenna J Med Biotech 2011; 3(4): 201-206

Keywords: Fetus, Genetic material, Prenatal diagnosis, Sex determination

Introduction

Traditionally, early fetal gender determination has been performed using invasive techniques, such as chorionic villus sampling or amniocentesis. These procedures, however, still carry a risk of miscarriage around 1-2% and cannot be performed until 11 weeks of gestation ⁽¹⁾. Also, reliable determination of fetal sex by means of ultrasonography cannot

be done in the first trimester because of uncompleted development of the external genitalia ⁽²⁾.

Therefore, more efforts have been spent in developing prenatal diagnostic procedures that do not constitute a risk for the fetus, based on the analysis of fetal genetic material obtained from the fetal cells circulating in

* Corresponding author:

Hamid Reza Khorram Khorshid, M.D., Ph.D, Genetic Research Centre, University of Social Welfare and Rehabilitation Sciences, Tehran, Iran, or Avicenna Research Institute, ACECR, Evin, Tehran, Iran

Tel: +98 21 22180138

Fax: +98 21 22432020

E-mail:

hrkkt@uswr.ac.ir

Received: 9 Oct 2011

Accepted: 26 Nov 2011

maternal blood^(3,4). Substantial advances have been made in the enrichment and isolation of fetal cells for analysis, but most techniques are time-consuming or require expensive equipment. In addition, these cells are very rare in maternal plasma (1 fetal cell per 10⁶ maternal cells) and they are unlikely to persist after delivery, including subsequent pregnancies^(5,6). Further studies on tumour derived DNAs in the plasma of cancer patients open up the possibility that fetal DNA which originated from apoptotic trophoblasts of the placenta, may also be found in maternal plasma^(7,8). Finally with the discovery of cell-free fetal DNA (cffDNA) fragments in the plasma of pregnant women carrying male fetus in 1997, reliable and accurate diagnosis became reality⁽⁹⁾.

More studies revealed that the concentration of fetal DNA in maternal plasma was found to be much higher than that present in the cellular fraction (25.4 *GEq/ml* in early stage of pregnancy and 292.2 *GEq/ml* in late stage of pregnancy)⁽¹⁰⁾ and the post-partum clearance of cffDNA from the maternal circulation was rapid with a mean half-life of 16.3 *min*⁽¹¹⁾. Also, fetal DNA molecules are generally shorter than maternal DNA molecules (between 193 *bp* to 313 *bp*). Therefore, it can be distinguished from the maternal DNA by size separation⁽¹²⁾. These findings have provided the opportunity to perform reliable genetic testing on cffDNA extracted from the maternal plasma at an early stage in pregnancy without interference from previous pregnancies for non-invasive prenatal diagnosis of paternally inherited disorders as well as fetal gender determination.

Using cffDNA in maternal plasma for fetal gender determination is mainly limited to those sequences which are absent from the maternal genome such as the *SRY*, *DYS14* and *DAZ* that are located on the Y chromosome. Therefore, the only way to identify these sequences is through male-bearing pregnancies⁽¹³⁾.

In this study, early determination of fetal gender using cffDNA can be considered as a

non-invasive pre-test to determine whether invasive prenatal diagnosis should be performed on a fetus having a risk of X-linked disorders or not. Thus, invasive procedures can be avoided when the fetus is known to be female at an early gestational age, while prenatal diagnosis might be performed only for male fetuses. To achieve this goal, the following study using cffDNA in maternal plasma was performed on pregnant women during their 6th -10th weeks of pregnancy to obtain the required sensitivity, specificity and accuracy for a non-invasive prenatal test.

Materials and Methods

Sample collection

Peripheral blood samples were obtained from 80 pregnant women at their 6th to 10th weeks of gestation who were referred to Avicenna Infertility Clinic in Tehran, Iran during 2009-2010. Also in this study, five non-pregnant women and five men were considered as a negative and positive control. Before blood sampling, signed consent forms were obtained from all participants and the protocol of the study was approved by the ethics committee of Avicenna research institute. For each case, 5 *ml* peripheral blood was collected in a tube containing 200 μ l of 0.5 *M* EDTA and immediately stored at 4 °C. Within 24 *hr* after collection, blood samples were centrifuged at 3000 *g* for 10 *min* and the upper plasma layer was carefully removed without disturbing the buffy coat, transferred into a new Eppendorf tube for storage at -20 °C until further processing.

DNA Extraction

Genomic DNA was extracted from 200 μ l of the plasma samples using the QIAamp DNA Blood Mini kit (Qiagen, USA) as recommended by the manufacturer according to the manufacturer's "Blood and Body Fluid" protocol. The extracted DNA was eluted in 50 μ l of the elution buffer.

Primers

Due to the low concentration of cffDNA in maternal plasma, multicopy *DAZ* and *DYS14*

genes were used for detection of sequences on the Y chromosome in male-bearing pregnancies. Also, sequence of single copy *SRY* gene was used as an internal control of gender determination. In order to assess the presence of sufficient cell-free DNA in an extraction, analysis of the *ACTB* sequences was performed. All the pairs of primers were designed by using the Primer3 and Gene Runner software (Table 1).

Nested PCR

The fetal sex was identified by nested PCR technique to amplify the *DYS14* and *DAZ* sequences, whereas the semi-nested PCR was used for amplification of *SRY* sequences. In the first round of PCR, the amplification reactions were set in a total volume of 25 μ L containing: 2 μ L of 10 ng genomic DNA, 2.5 μ L of 10X PCR buffer (Roch, Germany), 1 μ L of 10 mM dNTPs, 10 pmol of each primers, 1 unit of Taq DNA polymerase (Roch, Germany), 2.5 μ L of MgCl₂ (for *SRY* and *DAZ*) and a 3 μ L of MgCl₂ for *DYS14*. Amplification was performed using a programmable thermal cycler gradient PCR system (Eppendorf, Germany) with an initial denaturation of 94°C for 5 min followed by 40 cycles of denaturation at 94°C for 30 sec, annealing at 62°C for 30 sec (for *SRY*, *DYS14*) and 64°C (for *DAZ*), extension at 72°C for 30 sec and the final extension at 72°C for 10 min.

One μ L of the PCR products were used as template for the second round of PCR. The reaction system and thermo-cycling condition were the same as those of the first round of PCR but they were carried out in 35 cycles. At the end of each round of PCR, amplifi-

cation products were visualized by staining with ethidium bromide after electrophoresis on 2% agarose gel. To recognize contamination, a non template control, containing DNA free water was also added in each reaction.

Anti-contamination measures

As an anti-contamination measure, an aerosol resistant pipette tips were used for all liquids and separate areas were considered for all the steps of the analysis. In order to eliminate contact with exogenous male DNA, only female operators were selected in all procedures using a laminar flow hood.

Statistical analysis

At the end, all the obtained results were compared with the actual gender of the newborns to calculate the sensitivity, specificity and accuracy of the applied method. Kappa coefficient of agreement was calculated to evaluate the precision and correctness of the method and for evaluation of the clinical application, parameters such as Positive Predictive Value (PPV) and Negative Predictive Value (NPV) were also analysed. Statistical analysis was performed using the SPSS statistical package (V.11.5).

Results

Statistical analysis of the data showed that from the total of 80 samples obtained from pregnant women with age range of 18 to 46 years (mean age=30.36) and pregnancy week range from 6 to 10 weeks (mean week=7.74), abortion was observed in 5 cases. Although the gender determination tests were conducted on these 5 samples, they were excluded from statistical analysis due to lack of knowledge

Table 1. Primer sequences used in PCR

	Primer name	Sequence (5' → 3')		Primer name	Sequence (5' → 3')
First round of PCR	<i>SRY</i>	Forward: TACAGCCATGCACAGAGAG Reverse: TCTTGAGTGTGTGGCTTTCG	Second round of PCR	<i>SRY</i>	Forward: AGTATCGACCTCGTCGGAAG Reverse: TCTTGAGTGTGTGGCTTTCG
	<i>DYS14</i>	Forward: AGCCCTGATCACTGACGAAG Reverse: TGCAGAGATGAACAGGATGC		<i>DYS14</i>	Forward: AGGAAGACTGGGGCTAGAGG Reverse: ACCTGTCAGGACAAGGTGGA
	<i>DAZ</i>	Forward: TACCTCCAAAGCACCAGAGC Reverse: AATCTACCCATTCCCGAACC		<i>DAZ</i>	Forward: TACCTCCAAAGCACCAGAGC Reverse: TGAGGAGGCATCTGGAAATC
	<i>ACTB</i>	Forward: GATGGTGGGCATGGGTGAGAAGGA Reverse: CATTGTAGAAGGTGTGGTGCCAGAT			

of the actual fetal gender to compare with test results. Also, among the 80 samples, 16 cases with multiple gestations (9 identical twins, 6 non-identical twins and 1 triplet) were observed which were included in our statistical analysis.

Nested PCR results

In all the obtained samples, *ACTB* sequences were amplified (PCR product length=149 bp) indicating the presence of sufficient DNA in the extracted samples (Figure 1A). Regarding the *SRY*, *DYS14* and *DAZ* sequences, no positive bands of PCR were observed in samples during the first round of PCR. However, on the electrophoresis results of the second round of PCR (Figures 1B, C, and D), positive bands (PCR product length=143 bp, 122 bp and 156 bp, respectively) were observed for each *SRY*, *DYS14* and *DAZ* sequences in 40 samples similar to positive control DNA sample which was re-

corded as positive, and as a result the male gender. On the other hand, in the absence of positive bands of PCR for 2 or 3 of the mentioned sequences in fetal samples similar to negative control DNA sample. These were considered as negative and would represent the female gender. It should be mentioned that in all the 40 samples classified as male fetuses all the 3 marker targets were positive.

Comparison of the obtained results with the actual birth outcome indicates that from 50 baby girls born, 49 fetal genders were correctly diagnosed and only in one case, positive result was obtained. Also from 42 baby boys born, 40 genders were correctly diagnosed by using the *SRY*, *DYS14* and *DAZ* sequences (Table 2).

The sensitivity and specificity of the method used in fetal gender determination (with 95% confidence intervals) were respectively 95.2% (95% CI= 0.842 to 0.987) and 98% (95% CI= 0.895 to 0.996). Kappa coefficient of agreement in relevant test is 0.934 and the p-values=0.001 were considered stat-

Downloaded from http://www.ajmb.org

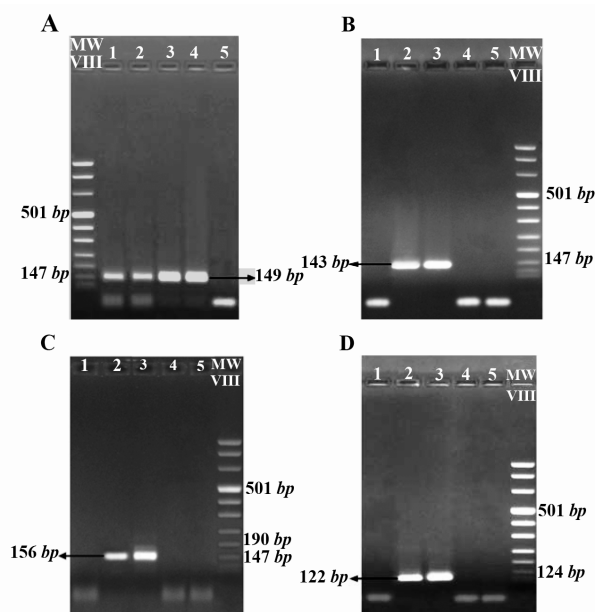


Figure 1. The agarose gel electrophoresis result of *ACTB* (A), *SRY* (B), *DYS14* (C) and *DAZ* (D) amplification by nested PCR analysis in fetal DNA samples extracted from the maternal plasma. Lanes 1 & 2: Fetal DNA, Lane 3: Male DNA as a positive control, Lane 4: non pregnant women DNA as a negative control and Lane 5: PCR reaction negative Control (Water). A) 149 bp Positive bands in lane 1 and 2 indicate the presence of sufficient DNA in the extracted samples. Observation of positive bands 143 bp B) 122 bp C) and 156 bp D) in lane 2 shows the amplification of the relevant genes and indicate that the gender of the fetus is male. The absence of positive band in lane 1 indicates the female gender of the fetus

Table 2. Comparison of test results by nested PCR with the actual birth outcome in 80 samples during 6th to 10th weeks of gestation

Gestational age	Result at birth	Result by Nested PCR	
		Female	Male
6 Weeks	Female	4	1 ^a
	Male	0	7
Total Gender at Birth		5	7
7 Weeks	Female	14	0
	Male	2 ^b	7
Total Gender at Birth		14	9
8 Weeks	Female	20	0
	Male	0	20
Total Gender at Birth		20	20
9 Weeks	Female	8	0
	Male	0	4
Total Gender at Birth		8	4
10 Weeks	Female	3	0
	Male	0	2
Total Gender at Birth		3	2
Total sensitivity of the test		95.2% (95% CI= 0.842 to 0.987)	
Total specificity of the test		98.0% (95% CI= 0.895 to 0.996)	

a False positive result
b False negative result

istically significant in each analysis using *SRY*, *DYS14* and *DAZ* sequences. The PPV and NPV of the method used respectively were 97.6% (95% CI= 0.895-0.996) and 96.1% (95% CI=0.868-0.989).

Discussion

In recent years, the existence of circulating fetal cell-free DNA in maternal blood which was discovered by Lo et al in 1997, created an outstanding revolution in non-invasive prenatal diagnosis. Fetal nucleic acids can be obtained from a simple blood draw of the mother that is risk-free and highly cost effective compared to conventional invasive methods. Despite the low concentration of cffDNA (3.4% to 6.2% of total maternal DNA) and with the advent of molecular techniques such as Polymerase Chain Reaction (PCR), nucleic acid based testing has become a valuable source for non-invasive prenatal diagnosis since nucleic acids can be amplified⁽¹⁰⁾. Therefore, in this study by using nested PCR technique, 95.2% sensitivity was achieved in identification of male fetuses using *SRY*, *DYS14* and *DAZ* sequences. This is very close to the sensitivity obtained in previous studies. And in most cases, even significantly higher sensitivity was obtained.

Previous investigations have shown sensitivity of 94% (Smid et al, 1999), 96% (Al Yamama et al, 2001), 94% (Zolotukhina et al, 2005) and 88.2% (Hong et al, 2006)⁽¹⁴⁻¹⁷⁾. However in these findings, longer time range of pregnancy were considered, which led to high probability of identifying cffDNA because of the gradual increase of its concentration with increasing gestational age⁽¹⁸⁾. In comparison, the results obtained in this study in the 6th to 10th weeks of pregnancy led to significantly better results.

Overall, the differences observed between the results of the previous studies and this study can be explained through the use of different methods of fetal DNA extraction, low concentration of cffDNA at an early gestational age, number of population, time range

of the pregnancy and existence of potential contamination.

In this study, false positive result was observed only in one case that gender of female fetus, which was at the age of six weeks, was diagnosed as a male. Citing the theory of vanishing twins within the first 7 weeks of gestation in 0.3-0.7% of pregnancies⁽¹⁹⁾, it can be concluded that during the time of sampling in the 6th week of gestation, there was a male twin that disappeared in the subsequent weeks of pregnancy and only the baby girl was born.

On the other hand, false negative results were obtained in two cases of pregnancies with non-identical twins which can be the result of extraction failure of the male twin DNA compared to the female twin due to its low concentration of cffDNA. Therefore if we do not consider multiple gestations in our study, we have reached a significant 100% sensitivity.

In comparison between total numbers of fetuses that were correctly diagnosed and total numbers of infant born, 96.7% accuracy was achieved in fetal gender determination. Also according to the Kappa coefficient of agreement, which is in "almost perfect" agreement range between 0.81 and 0.99⁽²⁰⁾, it can be concluded that the results are remarkably consistent with the actual gender of the babies.

To check whether the method used in this study is suitable for clinical application or not, the parameters of PPV and NPV were calculated. The PPV and NPV indicate that if the test results are positive and the fetus is diagnosed as a boy, there is 97.6% probability to be a boy and 96.1% probability to be a girl if the test results are negative. Therefore, this method can be used as a clinical method in determining the fetal gender due to its high probability of correct prediction, prior to applying invasive methods.

Conclusion

We hope that non-invasive fetal gender determination using cffDNAs in maternal plasma would allow us to obtain an early

knowledge of the fetal sex and adding to timely clinical management. This could reduce the need for invasive procedures in pregnant women carrying an X-linked disorder up to 50%. Also, hopefully in the near future, this method can be applied as a diagnostic tool for diseases of pregnancy such as pre-eclampsia or preterm labor, or for fetal anomalies such as aneuploidies.

Acknowledgement

We would like to thank all of the individuals who kindly accepted to participate in this study. Also, we are deeply indebted to the personnel of Avicenna Infertility Clinic for their assistance in sample collection and to Ms. H. Edalatkhah for their helpful advices. Financially, this study was supported by Avicenna Research Institute.

References

1. Brandenburg H, Jahoda MG, Pijpers L, Reuss A, Kleyer WJ, Wladimiroff JW. Fetal loss rate after chorionic villus sampling and subsequent amniocentesis. *Am J Med Genet* 1990;35(2):178-180.
2. Odeh M, Granin V, Kais M, Ophir E, Bornstein J. Sonographic fetal sex determination. *Obstet Gynecol Surv* 2009;64(1):50-57.
3. Simpson JL, Elias S. Isolating fetal cells in maternal circulation for prenatal diagnosis. *Prenat Diagn* 1994;14(13):1229-1242.
4. Bianchi DW, Flint AF, Pizzimenti MF, Knoll JH, Latt SA. Isolation of fetal DNA from nucleated erythrocytes in maternal blood. *Proc Natl Acad Sci USA* 1990;87(9):3279-3283.
5. Hamada H, Arinami T, Kubo T, Hamaguchi H, Iwasaki H. Fetal nucleated cells in maternal peripheral blood: frequency and relationship to gestational age. *Hum Genet* 1993;91(5):427-432.
6. Hamada H, Arinami T, Hamaguchi H, Kubo T. Fetal nucleated cells in maternal peripheral blood after delivery. *Am J Obstet Gynecol* 1994;170(4):1188-1193.
7. Chen XQ, Stroun M, Magnenat JL, Nicod LP, Kurt AM, Lyautey J, et al. Microsatellite alterations in plasma DNA of small cell lung cancer patients. *Nat Med* 1996;2(9):1033-1035.
8. Alberry M, Maddocks D, Jones M, Abdel Hadi M, Abdel-Fattah S, Avent N, et al. Free fetal DNA in maternal plasma in anembryonic pregnancies: confirmation that the origin is the trophoblast. *Prenat Diagn* 2007;27(5):415-418.
9. Lo YM, Corbetta N, Chamberlain PF, Rai V, Sargent IL, Redman CW, et al. Presence of fetal DNA in maternal plasma and serum. *Lancet* 1997;350(9076):485-487.
10. Lo YM, Tein MS, Lau TK, Haines CJ, Leung TN, Poon PM, et al. Quantitative analysis of fetal DNA in maternal plasma and serum: implications for non-invasive prenatal diagnosis. *Am J Hum Genet* 1998;62(4):768-775.
11. Lo YM, Zhang J, Leung TN, Lau TK, Chang AM, Hjelm NM. Rapid clearance of fetal DNA from maternal plasma. *American journal of human genetics*. *Am J Hum Genet* 1999;64(1):218-224.
12. Li Y, Zimmermann B, Rusterholz C, Kang A, Holzgreve W, Hahn S. Size separation of circulatory DNA in maternal plasma permits ready detection of fetal DNA polymorphisms. *Clin Chem* 2004;50(6):1002-1011.
13. Wright CF, Burton H. The use of cell-free fetal nucleic acids in maternal blood for non-invasive prenatal diagnosis. *Hum Reprod Update* 2009;15(1):139-151.
14. Al-Yatama MK, Mustafa AS, Ali S, Abraham S, Khan Z, Khaja N. Detection of Y chromosome-specific DNA in the plasma and urine of pregnant women using nested polymerase chain reaction. *Prenat Diagn* 2001;21(5):399-402.
15. Hong P, Zhu PY, Huang YF, Luan JF. Study on fetal SRY gene in maternal plasma using nested polymerase chain reaction. *Zhonghua Nan Ke Xue* 2006;12(4):333-336.
16. Smid M, Lagona F, de Benassuti L, Ferrari A, Ferrari M, Cremonesi L. Evaluation of different approaches for fetal DNA analysis from maternal plasma and nucleated blood cells. *Clin Chem* 1999;45(9):1570-1572.
17. Zolotukhina TV, Shilova NV, Voskoboeva EY. Analysis of cell-free fetal DNA in plasma and serum of pregnant women. *J Histochem Cytochem* 2005;53(3):297-299.
18. Horinek A, Korabecna M, Panczak A, Gallova ZU, Nouzova K, Calda P, et al. Cell-free fetal DNA in maternal plasma during physiological single male pregnancies: Methodology issues and kinetics. *Fetal Diagn Ther* 2008;24(1):15-21.
19. Landy HJ, Keith LG. *Hum Reprod Update* 1998;4(2):177-183.
20. Viera AJ, Garrett JM. Understanding interobserver agreement: the kappa statistic. *Fam Med* 2005;37(5):360-363.