



## Gypenosides Production and Spermatogenesis Recovery Potentials of Extracts from Cell Suspension Cultures of *Gynostemma pentaphyllum*

Tung Nguyen-Thanh<sup>1,2</sup>, Sang Dang-Ngoc<sup>3,4</sup>, Dung Tran-Quoc<sup>5</sup> and Quang Hoang-Tan<sup>3\*</sup>

1. Faculty of Basic Science, University of Medicine and Pharmacy, Hue University, Hue 49000, Vietnam

2. Institute of Biomedicine, University of Medicine and Pharmacy, Hue University, Hue 49000, Vietnam

3. Institute of Biotechnology, Hue University, Hue 49000, Vietnam

4. Vo Nguyen Giap Gifted High School, Quang Binh 47000, Vietnam

5. University of Education, Hue University, Hue 49000, Vietnam

### Abstract

**Background:** *Gynostemma pentaphyllum* (GP), also called Giao-co-lam, is a traditional Vietnamese herb, also known as the "Herb of Immortality", that grows throughout Asian countries and is used for the treatment of hematuria, edema in the pharynx and neck, tumors, and trauma.

**Methods:** In this study, we investigated the effects of culture conditions on cell growth and total gypenoside accumulation in the GP suspension cells. Cells were cultured on Murashige and Skoog (MS) medium supplemented with 2.0 mg/L KIN and 0.5 mg/L IBA, and different inoculum sizes (2-4 g) for 10-24 days.

**Results:** The results showed that the optimum inoculum size and shaking speed were 3 g of callus and 120 rpm, respectively. The highest cell biomass reached was 5.833 g of fresh weight, corresponding to 0.136 g of dry weight after 20 days of culture. The total gypenoside and Rb1 accumulation was the highest after 18 days of culture, with 46.498 mg/g and 0.038 mg/g dry weight, respectively. In addition, the crude extract from GP cell suspension cultures remarkably improved pathological changes in mouse testicular tissue after scrotal heat exposure. Blood testosterone levels were significantly increased in heat-exposed mice treated with the GP cell suspension culture extract.

**Conclusion:** Taken together, these results suggest that GP bio-mass production by cell suspension cultures leads to the accumulation of gypenosides in large amounts, and provides the potential for the recovery of spermatogenesis following heat stress.

**Keywords:** Giao-co-lam, *Gynostemma pentaphyllum*, Gypenoside, Heat stress, Saponin Rb1, Spermatogenesis, Suspension cells

**To cite this article:** Nguyen-Thanh T, Dang-Ngoc S, Tran-Quoc D, Hoang-Tan Q. Gypenosides Production and Spermatogenesis Recovery Potentials of Extracts from Cell Suspension Cultures of *Gynostemma pentaphyllum*. Avicenna J Med Biotech 2023;15(4):216-222.

\* Corresponding author:  
Quang Hoang-Tan, Ph.D.,  
Institute of Biotechnology, Hue  
University, Hue 49000, Vietnam  
Tel: +84 983735509  
E-mail:  
htquang@hueuni.edu.vn  
Received: 28 Mar 2023  
Accepted: 3 Jul 2023

### Introduction

*Gynostemma pentaphyllum* (Thunb.) Makino (GP) belongs to the Gynostemma, Cucurbitaceae family, and is a perennial creeping herb<sup>1</sup>. GP is a medicinal plant with potential pharmacological activities such as antioxidant, antitumor, immunopotentiating, cholesterol-lowering, hypoglycemic, and antidiabetic effects<sup>2</sup>. More than 180 gypenosides, flavonoids, and polysaccharides have been isolated and characterized from GP<sup>3</sup>. In Vietnam, GP has been used as a folk medicine to treat cough and chronic bronchitis and is distributed from plains to mountainous areas at altitudes of up to 2000 m<sup>4</sup>.

Gypenosides, dammarane saponins isolated from GP, are the most important bioactive compounds that respond to their biological activities and clinical effects<sup>4,5</sup>. The chemical structure of gypenosides closely resembles that of the ginsenosides in *Panax ginseng*<sup>2</sup>. The eight saponins found in GP are similar to the protopanaxadiol-type in *Panax ginseng*, including ginsenosides Rb1 (Gypenoside III), Rc, Rb3, Rd (Gypenoside VIII), F2, Rg3, malonyl-Rb1, and malonyl-Rd<sup>5</sup>.

Numerous bioactive compounds are produced in plants through the application of bioreactors to cultivate plant cells and organs. Plant cell culture in a bio-

reactor has many advantages over classical tissue culture such as easy optimization of the real-time temperature, nutrients, oxygen concentration, and pH of the medium. On the other hand, the cost and time consumed are reduced, the quality of products is enhanced without pesticide contamination, and production is independent of cultivation season or geographical constraints<sup>6</sup>. However, there is limited information on gypenoside production in GP cell culture<sup>2</sup>. However, *in vitro* gypenoside production has been reported, such as in hairy root cultures<sup>2</sup> or calli<sup>7</sup>. Gypenoside production in cell suspension cultures has not been well studied.

GP extract has been reported to affect cell and animal models of several diseases such as chronic liver disease<sup>8</sup>, dermal cell aging<sup>9</sup>, obesity<sup>10</sup>, and cancer<sup>11</sup>. GP has been proposed to correlate with multiple signaling pathways, including apoptosis, cell cycle arrest, inhibition of glycolysis, immunomodulatory activity, and antioxidant activity by upregulating SIRT1 and regulating the EGFR/PI3K/Akt signaling pathway<sup>10,12</sup>. Furthermore, several clinical studies have shown that the GP extract could have potent curative effects on cancer<sup>11</sup>, chronic stressful conditions<sup>13</sup>, treating obese individuals<sup>14</sup>, and improving body composition in overweight males and females<sup>15</sup>.

This study aimed to establish a suspension cell culture system of *Gynostemma pentaphyllum* for gypenoside production, analyze the gypenosides accumulated in the cells, and investigate the effect of suspension cell biomass extract on spermatogenesis in mice.

## Materials and Methods

### Cell suspension culture

GP calli were provided by the Laboratory of Gene Technology, Institute of Biotechnology, Hue University, Vietnam<sup>16</sup>. Cell suspension culture was conducted by transferring 2 g of 30-day-old calli into a 250 ml Erlenmeyer flask containing 50 ml of Murashige and Skoog (MS) liquid medium supplemented with 2.0 mg/L KIN and 0.5 mg/L IBA. The culture flasks were then incubated at 25±2°C, shaking at 120 rpm<sup>17</sup>. Suspension cells were harvested every two days, starting from day 10 to day 24. The fresh cell biomass was filtered, washed with distilled water, and weighed. Dry weight was determined by drying the fresh biomass at 50°C until a constant weight was achieved. Cell growth and gypenoside accumulation during the culture period were estimated.

To investigate the effects of inoculum size on gypenoside accumulation, culture systems with different inoculum sizes (2-4 g of calli per flask) were used. Suspensions of cells were collected on the day with the highest total gypenoside concentration, as previously determined.

### Quantification of gypenosides accumulation

Dried suspension cells of GP (0.5 g) were extracted

with 5 ml of 80% methanol, ultrasonicated for 30 min, repeated three times, and evaporated at room temperature. The residues were resuspended in methanol and filtered through a 0.22 µm membrane. The gypenoside solution was maintained at 4°C for further experiments<sup>18</sup>.

### Total gypenosides quantification

The total gypenoside concentration was estimated using colorimetric methods<sup>19,20</sup>. Ten mg of gypenosides residue were dissolved in 5 ml of 80% methanol. Fifty µl of the solution was transferred to another test tube and 0.25 ml of vanillin reagent (8% w/v) was added. The reaction solution was placed on ice and 2.5 ml of 72% (v/v) sulfuric acid was added, mixed, and left for 3 min. The test tubes were warmed to 60°C for 10 min and then cooled on ice. Absorbance was measured at 544 nm using a UV-Vis scanning spectrophotometer (Spectro UV-2650, Labomed, Inc.). The ginsenoside content was calculated based on ginsenoside Rb1 (Y0001347, CRS) standard curves.

### Rb1 quantification

The residue was resuspended in methanol to a final concentration of approximately 5 mg/ml and filtered (0.22 µm). Rb1 content was determined by HPLC using an Alliance E2695 system with a C18 column (4.6 mm × 250 mm × 5 mm). The mobile phase consisted of water (66%) and acetonitrile (34%) for 20 min, a column temperature of 30°C, a flow rate of 0.8 ml/min, and an injected volume of 20 µl. The signal was measured using a PDA2998 detector at a wavelength of 203 nm<sup>21</sup>. The Rb1 content was calculated based on the peak area of the HPLC dendrogram compared to the standard Rb1.

### Animal model for heat stress-induced spermatogenesis

The animal experimental protocol was reviewed and approved by the Hue University of Medicine and Pharmacy (certificate no. H2019/345). Adult male Swiss mice, aged 8-10 weeks old (20-23 g), were purchased from the Pasteur Institute of Nha Trang, Vietnam. Mice were kept in an animal facility at a controlled temperature (25±1°C) and photoperiod (12 hr light: 12 hr dark) with free access to food and water. The animals were randomly divided into four groups of 10 mice each: Control group (CON), 40°C Heat exposure group (H40), 40°C heat exposure and treatment with extraction of natural products from GP at 200 mg/kg group (H40+N), 40°C heat exposure and treatment with extraction of biomass products from GP cell suspension culture at 200 mg/kg group (H40+CS).

The heat-stress procedure was performed as described in a previous study. In brief, the lower half of the mouse's body, including the scrotum, was submerged in a temperature-controlled water bath at 40°C for 10 min, twice per day, at 10 min intervals, 6 days per week for 5 weeks. Control mice were treated in the same way but in a water bath maintained at 25°C. After the bath, the mice were dried and examined for any

injury or redness of the scrotal skin before being returned to their cages. Mice in the four groups were housed in different cages and had free access to water and food. All animals were cared for under identical environmental conditions. Mice were monitored for general health. After completing the heat exposure experiment for five weeks, all mice were sacrificed under anesthesia. Blood and testicular tissues were harvested for testosterone and histological morphometric analyses.

#### Tissue processing and hematoxylin-eosin staining

At the end of the surgical procedure, testicular specimens were individually immersed in 4% buffered formaldehyde, dehydrated with graded concentrations of ethyl alcohol, and embedded into paraffin blocks. Paraffin sections 5  $\mu\text{m}$  thick were obtained and transferred onto gelatin-coated slides, deparaffinized with xylene, and then rehydrated through a descending series of ethanol and water. The slides were stained with Hematoxylin and Eosin (H&E) and observed under a light microscope for histopathological analysis.

#### Blood sampling and plasma testosterone assays

Blood samples were harvested from anesthetized mice by heart puncture using a syringe and collected in EDTA blood collection tubes. Serum was obtained after centrifugation at 2000 rpm at 4°C for 20 min. Plasma testosterone concentration was measured by electrochemiluminescence immunoassay using Elecsys Testosterone II (05200067190; Roche, Basel, Switzerland), according to the manufacturer's instructions.

#### Statistical analysis

All cell culture and gypenoside quantification experiments were repeated thrice. Means were compared using one-way analysis of variance (ANOVA), followed by Duncan's test ( $p < 0.05$ ).

## Results

#### Biomass production by suspension cell cultures

A preliminary investigation of the growth of GP suspension cells showed that the growth rate was low during 0-10 days of culture, in which fresh biomass increased from 2.000 to 2.280 g/flask (data not shown). Thus, cell biomass and gypenoside content were estimated only after 10 days of incubation. As shown in figure 1, the cell biomass increased continuously from 10 to 20 days of culture. The highest fresh biomass reached was 3.780 g/flask (0.087 g dry biomass). Cell biomass accumulation dramatically decreased, accumulating only 3.010 g and 0.059 g of fresh and dry weight, respectively, after 24 days of culture.

#### Kinetic gypenosides accumulation in cell suspension culture

The accumulation of Rb1 and gypenosides in suspension cells reached the highest value 2-4 days earlier than biomass accumulation (Table 1). The total gypenosides increased from day 10 to day 18, reaching a maximum of 42.122 mg/g dry weight, and then decreased after 20 days of cultivation. There were no

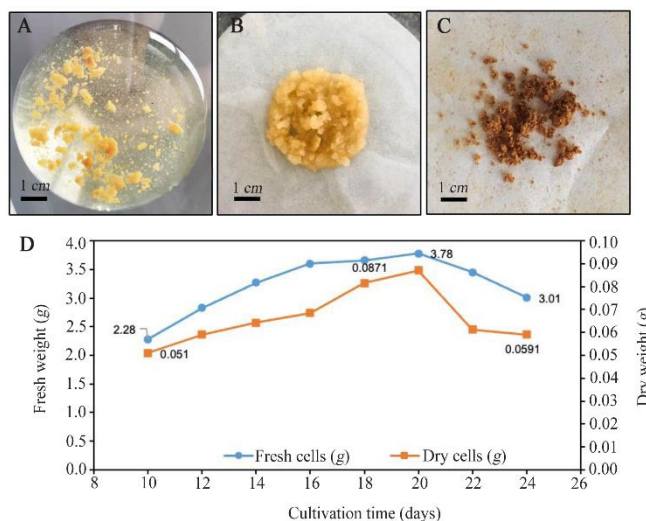


Figure 1. Cell growth kinetics and biomass accumulation of *Gynostemma pentaphyllum* using cell suspension culture.

A) *Gynostemma pentaphyllum* suspension cell culture, B) Fresh biomass accumulation, C) and dried biomass, D) Growth kinetics curves of fresh and dry weights of suspension cells in MS liquid medium supplemented with 2.0 mg/L KIN and 0.5 mg/l IBA on culturing days.

Table 1. Gypenosides accumulation in cell suspension culture

Cultivation time (days)	Rb1 (mg/g dry weight)	Total gypenosides (mg/g dry weight)
10	0.010 <sup>d</sup>	28.291 <sup>cd</sup>
12	0.011 <sup>d</sup>	30.343 <sup>c</sup>
14	0.012 <sup>d</sup>	36.210 <sup>b</sup>
16	0.022 <sup>c</sup>	41.321 <sup>a</sup>
18	0.049 <sup>a</sup>	42.122 <sup>a</sup>
20	0.050 <sup>a</sup>	34.100 <sup>c</sup>
22	0.041 <sup>a</sup>	25.510 <sup>d</sup>
24	0.024 <sup>c</sup>	24.081 <sup>d</sup>

Different letters (a, b, c, ...) in each column indicate significantly different means (Duncan's test,  $p < 0.05$ ).

significant differences in gypenoside concentration between days 16 and 18. The biosynthesis of Rb1 was not relevant to gypenoside accumulation. Gypenoside content in cells increased from 10 to 18 days to a maximum of 42.122 mg/g dry weight. Meanwhile, Rb1 content was maintained in the cell until day 20, and then decreased sharply from days 22 to 24.

#### Optimization of culture conditions for gypenosides biosynthesis

Table 2 shows the data on the growth and gypenoside accumulation of 16-20-day suspension cell lines that differed in inoculum sizes (2-4 g callus). The results indicated that the fresh biomass reached the highest value on day 20 when the inoculum sizes were 2 and 3 g. Meanwhile, the biomass reached its highest value earlier with 4 g inoculum. Increasing the inoculum size to 3 g and 4 g also enhanced biomass accumu-



Table 2. Effects of inoculum sizes on cells growth and gypenosides accumulation

Inoculum size (g)	Cultivation time (days)	Fw (g/flack)	Dw (g/flack)	Rb1 (mg/g dry weight)	Gypenosides (mg/g dry weight)
2	16	3.602 <sup>c</sup>	0.069 <sup>c</sup>	0.022 <sup>c</sup>	41.320 <sup>b</sup>
	18	3.661 <sup>c</sup>	0.082 <sup>b</sup>	0.049 <sup>a</sup>	42.876 <sup>b</sup>
	20	3.781 <sup>c</sup>	0.087 <sup>b</sup>	0.050 <sup>a</sup>	34.103 <sup>c</sup>
3	16	4.660 <sup>b</sup>	0.122 <sup>a</sup>	0.019 <sup>c</sup>	32.291 <sup>c</sup>
	18	5.392 <sup>a</sup>	0.128 <sup>a</sup>	0.038 <sup>b</sup>	46.498 <sup>a</sup>
	20	5.833 <sup>a</sup>	0.136 <sup>a</sup>	0.029 <sup>b,c</sup>	43.439 <sup>b</sup>
4	16	5.189 <sup>a</sup>	0.129 <sup>a</sup>	0.020 <sup>c</sup>	33.169 <sup>c</sup>
	18	5.430 <sup>a</sup>	0.130 <sup>a</sup>	0.021 <sup>c</sup>	34.520 <sup>c</sup>
	20	4.570 <sup>b</sup>	0.112 <sup>a</sup>	0.019 <sup>c</sup>	31.981 <sup>c</sup>

Different letters (a, b, c, ...) in each column indicate significantly different means (Duncan's test,  $p < 0.05$ ).

lation in comparison with an inoculum size of 2 g, reaching 5.833 g, 5.430 g, and 3.781 g, respectively. The data suggest that cell growth may require a certain initial density of cells, where lower or higher inoculum sizes inhibit the growth of the suspension cell culture. HPLC analysis of gypenoside showed the highest concentration of 46.498 mg/g dry weight after 18 days of culture with an inoculum size of 3 g. In contrast, the highest Rb1 concentration was observed in the culture system with 2 g of inoculum. The present study suggests that the inoculum size of the GP suspension cell culture may vary depending on the research purpose where gypenosides or Rb1 production is targeted.

**Cell biomass of GP cell recovery of spermatogenesis after heat stress**

Control mice without heat exposure and those who didn't receive GP extract showed histopathology of normal testicles with the complete process of spermatogenesis in which progenitor spermatogonia developed into mature spermatozoa in the seminiferous tubules (Figure 2A). Meanwhile, chronic heat exposure at 40°C for 5 weeks (H40 group) impaired the histological architecture of the testicular tissue, and spermatogenesis was completely arrested. The testicular histology of the heat-exposed group exhibited degenerated and disorganized features of spermatogenic epithelium and reduced spermatogenic cell numbers (Figure 2B). Heat-exposed mice receiving GP extract from natural plants (H40+N group) or cell suspension cultures (H40+CS group) showed histological recovery of testicular tissue compared to those in the heat-stress exposure group. Several round and elongated spermatids were found in the spermatogenic epithelium near the lumen. Spermatogenesis was ameliorated with the differentiation process that occurs in the seminiferous epithelium observed in the testis of heat-exposure mice receiving GP extract (Figures 2C and D).

Plasma testosterone assay was performed to assess spermatogenesis. Figure 2E shows that GP extract attenuated the heat stress-induced disruption of spermatogenesis. Control mice had higher levels of plasma

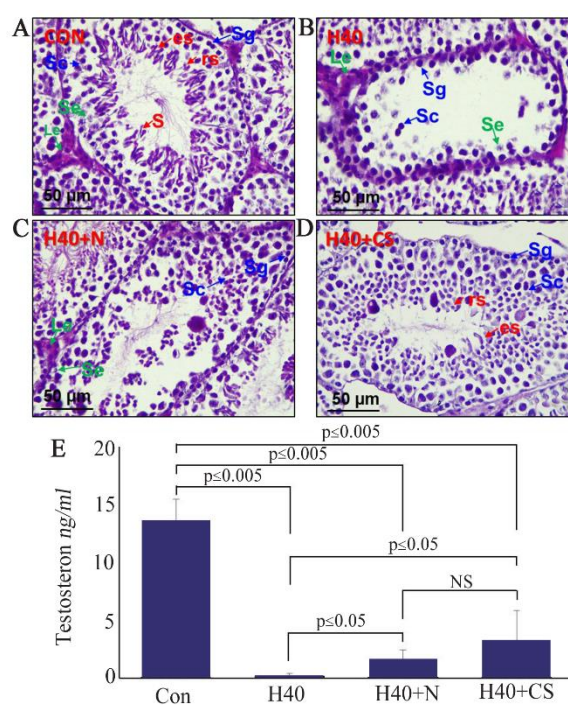


Figure 2. Attenuation of heat-stress-induced spermatogenesis complications by GP extract in mice. A) Normal spermatogenesis in the seminiferous tubules in the testes of the control group (CON). B) Spermatogenesis in seminiferous tubules disruption in heat stress-induced mice at 40°C (H40). C) Extraction of natural products from plant recovery spermatogenesis (H40+N). D) Extraction of biomass products from cell suspension culture recovered spermatogenesis (H40+CS). E) The extraction of natural products from plants and biomass products from cell suspension cultures recovers blood testosterone levels. Le: Leydig cells, Se: Sertoli cells, Sg: Spermatogonia, Sc: Spermatocytes, rs: round spermatids, es: elongating spermatids, S: Spermatozoa

testosterone than those exposed to heat. Chronic heat exposure at 40°C for five weeks significantly suppressed serum testosterone levels. Heat exposure may disrupt testosterone biosynthesis in mice. Interestingly, GP extract from natural plants and cell suspension culture significantly increased plasma testosterone levels

compared to those in mice that received only heat stress. There was no significant difference in testosterone levels in mice that received the GP extract from natural plants or cell suspension cultures.

### Discussion

Plant cell suspension culture in a bioreactor, an incessant, sustainable, economical, and viable production of secondary metabolites, has been considered a powerful tool for the production of bioactive compounds from medicinal plants<sup>22</sup>. Numerous compounds in medicinal plants are produced through plant tissue culture, such as catechin from *Ajuga bracteosa*<sup>23</sup> and eurycomanone from *Eurycoma longi-folia*<sup>24</sup>. Production of high-value active secondary metabolites at the industrial level, such as shikonin, berberine, and sanguinarine, has been achieved in cell cultures of *Lithospermum erythrorhizon*, *Coptis japonica*, and *Papaver somniferum*, respectively<sup>25</sup>.

Only a few studies have been conducted on the accumulation of bioactive metabolites in *in vitro* cultures of *Gynostemma pentaphyllum* (*G. penta-phyllum*). For example, Chang *et al* established a hairy root culture system of *G. pentaphyllum* and found that the dry biomass of hairy roots grown in MS medium for 49 days was 7.3 g/L with a gypenoside content of 38 mg/g dry weight<sup>2</sup>. Gypenoside is also produced from the callus culture of *G. pentaphyllum*<sup>7,16</sup>. Gy-penoside production has not been well studied, except for the first results of our studies<sup>26,27</sup>.

Our data confirmed that both gypenosides and Rb1 accumulated the most after 18 days of suspension cell culture. Thus, further gypenoside and Rb1 accumulation studies were conducted on suspension cells harvested after 18 days of culture. Moreover, gypenosides in a cell line are higher than those of callus and stem<sup>16</sup>, and similar to a hairy root in a previous report<sup>2</sup>.

In particular, inoculum size had a positive effect on biomass and metabolite production up to an optimum concentration<sup>28</sup>. In this study, the optimal inoculum size for biomass accumulation and gypenoside production was 3 g of callus per 50 ml culture medium (6% w/v), which is similar to that reported by Loc *et al* for the production of madecassoside in *Centella asiatica* (L.) suspension cell culture<sup>29</sup>. Nhan *et al* also found that an inoculum size of 6% (w/v) is optimal for eurycomanone biosynthesis in long jack (*Eurycoma longi-folia*) suspension cells culture<sup>24</sup>. In other reports, the optimal initial inoculum sizes for secondary metabolic compound production were lower, such as 2% for flavonoid production from *Ficus deltoidea* var. *kun-stleri* cell<sup>17</sup>, or 3.2% in anthocyanin production from *Vitis vinifera* cell<sup>30</sup>.

Our histological examination and plasma testosterone analysis indicated that both GP extract from natural plants and cell suspension culture attenuated heat stress-induced damage to testicular tissue and sperma-

togenesis complications. For centuries, many herbs have been used by humans in folk medicine as therapeutics for male reproductive impairment, such as bioactive compounds (Curcumin, Ellagic Acid, Vitamin C, Vitamin E) and natural products with bioactive compounds (Garlic, Ginger, Grape, Green Tea)<sup>31</sup>. Heat stress can negatively affect male reproduction in mammals. Arun *et al* showed that *Phyllanthus emblica* leaf extract protects against testicular damage in rats with chronic stress by changing to functional proteins, especially testicular tyrosine-phosphorylated proteins<sup>32</sup>. Green tea extract (*Camellia sinensis*) has been reported to lead to better recovery of sperm motility and morphology after testicular heat shock in rats<sup>33</sup>. Hou *et al* show that twenty-five herbs in the Duzhong Butiansu prescription improved heat stress-induced spermatogenic disorders by regulating sperm formation and the HSF/Hsp70 signaling pathway<sup>34</sup>.

### Conclusion

In conclusion, the highest gypenoside concentration in suspension cells obtained in the 50 ml MS liquid medium culture system contained 3 g of inoculum size and a shaking speed of 120 rpm. The total gypenosides and Rb1 accumulation reach their highest after 18 days of culture with 46.498 mg/g and 0.038 mg/g dry weight, respectively. This study provides evidence for the efficient use of GP suspension cells to accelerate the production of gypenosides and Rb1. GP cell suspension biomass extract attenuates heat stress-induced disruption of spermatogenesis in seminiferous tubules and plasma testosterone level.

### Acknowledgement

This work was partially supported by Hue University under the Core Research Program Grant No. NCM. DHH2020.12. We thank the reviewer and approval by the Hue University of Medicine and pharmacy ethics committee.

### Conflict of Interest

No conflict of interest.

### References

1. Lee KH. Jiaogulan: China's "Immortality Herb". Journal of Natural Products 2000;63:431.
2. Chang CK, Chang KS, Lin YC, Liu SY, Chen CY. Hairy root cultures of *Gynostemma pentaphyllum* (Thunb.) Makino: a promising approach for the production of gypenosides as an alternative of ginseng saponins. Biotechnol Lett 2005 Aug;27:1165-9.
3. Chen PY, Chang CC, Huang HC, Zhang LJ, Liaw CC, Lin YC, et al. New dammarane-type saponins from *Gynostemma pentaphyllum*. Molecules 2019 Apr 8;24(7):1375.
4. Ky PT, Huong PT, My TK, Anh PT, Van Kiem P, Van Minh C, et al. Dammarane-type saponins from Gynos-

- temma pentaphyllum. *Phytochemistry* 2010 Jun 1;71(8-9):994-1001.
5. Razmovski-Naumovski V, Huang TH, Tran VH, Li GQ, Duke CC, Roufogalis BD. Chemistry and pharmacology of *Gynostemma pentaphyllum*. *Phytochemistry Review* 2005 Jul;4:197-219.
  6. Wang J, Gao WY, Zhang J, Zuo BM, Zhang LM, Huang LQ. Production of ginsenoside and polysaccharide by two-stage cultivation of *Panax quinquefolium* L. cells. *In Vitro Cellular & Developmental Biology-Plant*. 2012 Feb;48:107-12.
  7. Zhonghua A, Zhangzheng Q. Effect of some stress factors on gypenoside accumulation in callus of *Gynostemma pentaphyllum*. *Chin J Appl Environ Biol* 1998; 4:10-14.
  8. Hong M, Cai Z, Song L, Liu Y, Wang Q, Feng X. *Gynostemma pentaphyllum* attenuates the progression of nonalcoholic fatty liver disease in mice: a biomedical investigation integrated with in silico assay. *Evid Based Complement Alternat Med* 2018 Mar 21;2018.
  9. Lobo SN, Qi YQ, Liu QZ. The effect of *Gynostemma pentaphyllum* extract on mouse dermal fibroblasts. *ISRN Dermatol* 2014;2014.
  10. Lee HS, Lim SM, Jung JI, Kim SM, Lee JK, Kim YH, et al. *Gynostemma pentaphyllum* extract ameliorates high-fat diet-induced obesity in C57BL/6N mice by upregulating SIRT1. *Nutrients* 2019 Oct 15;11(10):2475.
  11. Li Y, Lin W, Huang J, Xie Y, Ma W. Anti-cancer effects of *Gynostemma pentaphyllum* (thunb.) makino (jiaogulan). *Chin Med* 2016 Dec;11(1):43.
  12. Zhang Y, Shi G, Luo Z, Wang J, Wu S, Zhang X, Zhao Y. Activity components from *Gynostemma pentaphyllum* for preventing hepatic fibrosis and of its molecular targets by network pharmacology approach. *Molecules* 2021 May 18;26(10):3006.
  13. Choi EK, Won YH, Kim SY, Noh SO, Park SH, Jung SJ, Lee CK, Hwang BY, Lee MK, Ha KC, Baek HI. Supplementation with extract of *Gynostemma pentaphyllum* leaves reduces anxiety in healthy subjects with chronic psychological stress: A randomized, double-blind, placebo-controlled clinical trial. *Phytomedicine*. 2019 Jan 1;52:198-205.
  14. Park SH, Huh TL, Kim SY, Oh MR, Tirupathi Pichiah PB, Chae SW, et al. Antiobesity effect of *Gynostemma pentaphyllum* extract (actiponin): a randomized, double-blind, placebo-controlled trial. *Obesity* 2014 Jan;22(1): 63-71.
  15. Rao A, Clayton P, Briskey D. The effect of an orally-dosed *Gynostemma pentaphyllum* extract (Activ-AMP®) on body composition in overweight, adult men and women: A double-blind, randomised, placebo-controlled study. *J Hum Nutr Diet* 2022 Jun;35(3):583-9.
  16. Quang HT, Thi PTD, Lan TT, Thuy PMT, Hoang VD, Kim PTA. [Effects of culture medium on callus growth of *Gynostemma pentaphyllum* (Thunb.) Makino – a valuable medicinal plant]. *Hue University Journal of Science: Natural Science* 2021;130:127-37. Vietnamese.
  17. Haida Z, Syahida A, Ariff SM, Maziah M, Hakiman M. Factors affecting cell biomass and flavonoid production of *Ficus deltoidea* var. *kunstleri* in cell suspension culture system. *Sci Rep*. 2019 Jul 2;9(1):9533.
  18. Wu Q, Jang M, Piao XL. Determination by UPLC-MS of four dammarane-type saponins from heat-processed *Gynostemma pentaphyllum*. *Biosci Biotechnol Biochem* 2014 Feb 1;78(2):311-6.
  19. Goel N, Sirohi SK, Dwivedi J. Estimation of total saponins and evaluate their effect on in vitro methanogenesis and rumen fermentation pattern in wheat straw based diet. *Journal of Advanced Veterinary Research* 2012 Apr 1;2(2):120-6.
  20. Hiai S, Oura H, Nakajima T. Color reaction of some sapogenins and saponins with vanillin and sulfuric acid. *Planta Med* 1976 Mar;29(02):116-22.
  21. Liu F, Ren D, Guo DA, Pan Y, Zhang H, Hu P. Method development for gypenosides fingerprint by high performance liquid chromatography with diode-array detection and the addition of internal standard. *Chem Pharm Bull* 2008 Mar 1;56(3):389-93.
  22. Chandran H, Meena, Barupal T, Sharma K. Plant tissue culture as a perpetual source for production of industrially important bioactive compounds. *Biotechnol Rep (Amst) (Amsterdam, Netherlands)* 2020, 26, e00450-e00450.
  23. Ali H, Khan MA, Kayani WK, Dilshad E, Rani R, Khan RS. Production of biomass and medicinal metabolites through adventitious roots in *Ajuga bracteosa* under different spectral lights. *J Photochem Photobiol B* 2019 Apr 1;193:109-17.
  24. Nhan NH, Loc NH. Enhancement of eurycomanone biosynthesis in cell culture of longjack (*Eurycoma longifolia*) by elicitor treatment. *Journal of Plant Biotechnology* 2018;45: 340-6.
  25. Rao SR, Ravishankar GA. Plant cell cultures: chemical factories of secondary metabolites. *Biotechnol Adv* 2002 May 1;20(2):101-53.
  26. Anh TT, Thi PT, Lan TT, Dung TQ, Vu NQ, Phuong TT, Quang HT. Affect of culture conditions on growth and accumulation of saponin Rb1 in *Gynostemma pentaphyllum* (Thunb.) Makino suspension cells. *InProc. Vietnam. Natl. Conf. Biotechnol* 2020 (pp. 885-890).
  27. Thanh TN, Thi DT, Ngoc SD, Do Thi T, Tan QH. Biomass accumulation of *Gynostemma pentaphyllum* (Thunb.) Makino in cell suspension cultures inhibiting human cancer cell growth. *Research Journal of Biotechnology Vol.* 2022 Mar;17:3.
  28. Gorret N, bin Rosli SK, Oppenheim SF, Willis LB, Lessard PA, Rha C, et al. Bioreactor culture of oil palm (*Elaeis guineensis*) and effects of nitrogen source, inoculum size, and conditioned medium on biomass production. *J Biotechnol* 2004 Mar 18;108(3):253-63.
  29. Loc NH, Giang NT, Huy ND, Lan TT. Accumulation of madecassoside-a major component of centelloside-in centella (*Centella asiatica* (L.) Urban) cells elicited by salicylic acid. *Periodicum Biologorum* 2017 Apr 24;119 (1).
  30. Jun-Ge QU, Zhang W, Quan-Li HU, Mei-Fang JI. [Impact of subculture cycles and inoculum sizes on

- suspension cultures of *Vitis vinifera*]. Sheng Wu Gong Cheng Xue Bao 2006 Nov;22(6):984-9. Chinese.
31. Martins RV, Silva AM, Duarte AP, Socorro S, Correia S, Maia CJ. Natural products as protective agents for male fertility. BioChem 2021 Sep 28;1(3):122-47.
  32. Arun S, Burawat J, Yannasithinon S, Sukhorum W, Limpongsa A, Iamsaard S. Phyllanthus emblica leaf extract ameliorates testicular damage in rats with chronic stress. J Zhejiang Univ Sci B 2018 Dec;19(12):948.
  33. Vieira JI, Silva TA, Barbosa WM, Azevêdo GL, Arruda LC, Guerra MM, et al. Effect of green tea extract (*Camellia sinensis*) on the spermatogenic parameters of Wistar rats submitted or not to testicular heat shock. Anim Reprod 2020 Jun 5;17(2):e20190049.
  34. Hou Y, Yuan P, Fu Y, Zhang Q, Wei Y, Gao L, et al. Duzhong butiansu prescription improves heat stress-induced spermatogenic dysfunction by regulating sperm formation and heat stress pathway. Evid Based Complement Alternat Med 2020 Feb 27;2020:6723204.