



# Identification of Critical Molecular Factors and Side Effects Underlying the Response to Thalictuberine in Prostate Cancer: A Systems Biology Approach

Fatemeh Saberi<sup>1,2</sup>, Zeinab Dehghan<sup>3</sup>, Effat Noori<sup>1,2</sup>, Zahra Taheri<sup>4</sup>, Marzieh Sameni<sup>1,2</sup>, and Hakimeh Zali<sup>5\*</sup>

1. Student Research Committee, Department of Medical Biotechnology, School of Advanced Technologies in Medicine, Shahid Beheshti University of Medical Sciences, Tehran, Iran

2. Cellular and Molecular Biology Research Center, Shahid Beheshti University of Medical Sciences, Tehran, Iran

3. Department of Comparative Biomedical Sciences, School of Advanced Medical Sciences and Technologies, Shiraz University of Medical Sciences, Shiraz, Iran

4. Department of Biology and Biotechnology, Pavia University, Pavia, Italy

5. Department of Tissue Engineering and Applied Cell Sciences, School of Advanced Technologies in Medicine, Shahid Beheshti University of Medical Sciences, Tehran, Iran

## Abstract

**Background:** Uncontrolled mitosis of cancer cells and resistance cells to chemotherapy drugs are the challenges of prostate cancer. Thalictuberine causes a mitotic arrest and a reduction of the effects of drug resistance, resulting in cell death. In this study, we applied bioinformatics and computational biology methods to identify functional pathways and side effects in response to Thalictuberine in prostate cancer patients.

**Methods:** Microarray data were retrieved from *Gene Expression Omnibus* (GEO), and protein-protein interactions and gene regulatory networks were constructed, using the Cytoscape software. The critical genes and molecular mechanisms in response to Thalictuberine and its side effects were identified, using the Cytoscape software and WebGestalt server, respectively. Finally, GEPIA2 was used to predict the relationship between critical genes and prostate cancer.

**Results:** The *POLQ*, *EGR1*, *CDKN1A*, *FOS*, *MDM2*, *CDC20*, *CCNB1*, and *CCNB2* were identified as critical genes in response to this drug. The functional mechanisms of Thalictuberine include a response to oxygen levels, toxic substances and immobilization stress, cell cycle regulation, regeneration, the p53 signaling pathway, the action of the parathyroid hormone, and the FoxO signaling pathway. Besides, the drug has side effects including muscle cramping, abdominal pains, paresthesia, and metabolic diseases.

**Conclusion:** Our model suggested newly predicted crucial genes, molecular mechanisms, and possible side effects of this drug. However, further studies are required.

**Keywords:** Bioinformatics, Computational biology, Gene expression, Gene regulatory networks, Prostate cancer

**To cite this article:** Saberi F, Dehghan Z, Noori E, Taheri Z, Sameni M, Zali H. Identification of Critical Molecular Factors and Side Effects Underlying the Response to Thalictuberine in Prostate Cancer: A Systems Biology Approach. *Avicenna J Med Biotech.* 2023;15(1):53-64.

## \* Corresponding author:

Hakimeh Zali, Ph.D.,  
Department of Tissue  
Engineering and Applied Cell  
Sciences, School of Advanced  
Technologies in Medicine, Shahid  
Beheshti University of Medical  
Sciences, Tehran, Iran

Tel: +98 21 22439848

## E-mail:

Hakimehzali@gmail.com

Received: 11 Jul 2022

Accepted: 5 Dec 2022

## Introduction

Prostate Cancer (PC) is neoplastic disease with significant clinical and economic burden that affects millions of men worldwide, especially in developed countries<sup>1,2</sup>. PC is the second most common cause of substantial morbidity and mortality in men. PC prevalence is estimated to be approximately 23% of all male cancers in 2012 in the population of Europe. This rate is

increasing significantly over recent years. The disease is complex and morphologically heterogeneous but is classified as adenocarcinoma<sup>1</sup>. PC generally has 99% overall survival for ten years if detected and treated early<sup>3</sup>. However metastatic castrate-resistant PCa (mCRPC) form remains incurable<sup>2,4</sup>.

The course of the disease is influenced by factors

such as the individual's health condition and the histopathological, anatomical, and molecular profile of the tumor. PC can be considered an age-related disease because its prevalence increases exponentially with age<sup>5</sup>. Given the aging population of the world, this could be an alarm. In addition, environmental factors associated with PC include radiation exposure, a high intake of saturated fat, dietary deficiency of selenium, vitamin E, and D. The overexpression of mutant Tp53 (Tumor protein) and B-cell lymphoma 2 (bcl-2), as well as reinforcement of the androgen receptor, play key roles in the development of the refractory hormone phenotype<sup>6,7</sup>. Also, Mutated Mutated in Multiple Advanced Cancers 1/P10 (MMAC1/p10) tumor suppressor genes may play a role in the metastatic phenotype of PC. Impotence and impaired urinary and bowel function are long-term side effects of over-treatment and treatment PC<sup>1</sup>.

The feature of cancer cells is that they divide uncontrollably at a high proliferation rate. Mitosis plays a fundamental role in cancer progression and is one of the most effective targets of cancer chemotherapy<sup>6</sup>. Volasertib and Alisertib (MNL8237), inhibitors of vital regulators of mitosis, have shown hopeful clinical efficacy in a variety of malignancies, including PC and acute myeloid leukemia. To date, microtubule-targeting drugs are the most effective mitosis inhibitors in chemotherapy strategies<sup>4</sup>. Docetaxel and cabazitaxel are widely used to treat PC in a chemotherapeutic approach. However, severe toxic effects and the development of drug resistance are among the concerns of using these drugs<sup>8</sup>. Therefore, action investigation of new therapeutic agents such as Thalictuberine (TH) is an unmet clinical need. TH is a phenanthrene alkaloid isolated from various sources. This natural product induces cell death in malignant human cell lines through apoptosis. Studies have shown that TH indirectly targets microtubule dynamics by inhibiting a tubulin-associated protein. One of the unresolved challenges in the treatment of cancer is drug resistance. P-glycoprotein (Pgp) is responsible for multidrug resistance in many cancers<sup>4</sup>. TH is not the primary substrate for Pgp and can treat drug-resistant cancers. This issue highlights the importance of studying the precise molecular mechanisms of this substance. Despite the improvement and survival of patients, anticancer drugs have various side effects such as damaging normal tissue and interrupting cell division of normal cells, which is a source of concern for patients and clinicians. There is a slight difference between an effective dose and a toxic dose of anticancer drugs. Therefore, sufficient knowledge of the side effects of anticancer drugs will help us to use the appropriate dose of anticancer drugs and manage unfavorable side effects observed during the therapy<sup>9</sup>.

Recently, bioinformatics approaches and network-based methods have allowed us to find out the precise molecular mechanisms of drugs and probably their side

effects. A deep understanding of the functional mechanisms of cancer is one of the essential components in the personalized and lifelong management of such diseases. Furthermore, these new biology concepts would help develop efficient and novel therapeutic and preventive approaches<sup>10-12</sup>. Utilizing and analyzing Gene Regulatory Networks (GRNs) could get insights into the outcomes of clinical trials<sup>13</sup>. In recent years' GRNs, high-throughput technologies, have been used for the analysis of gene expression data<sup>14</sup>. GRNs are a collection of molecular regulators that interact with each other and regulate the gene expression levels of mRNA and proteins. Gene regulatory networks play a key role in cellular function<sup>15</sup>. Motifs in GRNs have an important function in determining gene expression such as generating temporal expression programs and governing the responses to fluctuating external signals<sup>16</sup>. Omics technologies led to novel classifications of prostate tumors and helped to choose novel targeted therapies<sup>17</sup>.

The detailed molecular mechanisms of TH in PC treatment and probably its side effects are not still comprehensively understood. Therefore, this study reports Protein-Protein Interaction (PPI) and gene regulatory networks to identify essential functional mechanisms and biological functions in response to TH. Here, we employ the Protein-Protein Interaction Network (PPIN) and GRN to predict and identify drug targets, Gene Ontology's (GOs), and PC's biochemical pathways in response to TH and probable side effects.

## Materials and Methods

This study is divided into four steps: 1) the identification of appropriate Genomic Spatial Event (GSE) of microarray data, including PC (LNCap cell line)/TH and non-treatable PC (LNCaP cell line) samples, 2) the analysis of PPIN and GRN of a dataset, 3) the identification and enrichment analysis of crucial genes and finally 4) the prediction of probable side effects. Figure 1 describes the workflow of the study.

### Data collection and processing

The PC/TH dataset was extracted from the *Gene Expression Omnibus* (GEO) database (<http://www.ncbi.nlm.nih.gov/geo/>)<sup>18</sup>. The GSE83459 dataset was collected as a dataset comparing PC (LNCaP cell line)/TH and non-treatable PC (LNCaP cell line)<sup>4</sup>. Differentially-Expressed Genes (DEGs) were identified according to ( $p < 0.05$ ) and ( $\log_2$  fold change  $> 0.5$  and  $< -0.5$ ). These DEGs were used for further analysis.

### PPIN construction and topological analysis

DEGs were plugged into the Bisogenet app (HPRD database) and STRING (<https://string-db.org/>) separately, and the interactions with threshold 0.7 were selected to retrieve the protein interaction network. We merged two networks in Cytoscape 3.5.1 software<sup>19</sup> and investigated the network topologically. Network Analyzer was used for the identification of nodes with

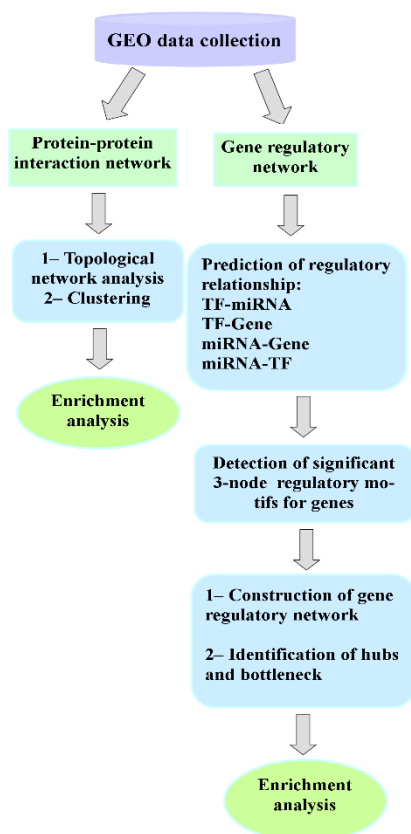


Figure 1. Workflow study.

high degree (hub), Betweenness-Centrality (bottleneck), and Closeness-Centrality. The nodes with degree (hub)  $>1$  were used as functional critical nodes. Both hub and bottleneck with high Closeness-Centrality play essential roles in fundamental cellular processes<sup>20,21</sup>.

#### Construction of PPI subnetwork

The Molecular Complex Detection (MCODE) app was applied to screen sub-network with highly interconnected regions in the protein network and identified their seed genes. The MCODE parameters included Node Score Cutoff: 0.2, Degree Cutoff: 2, K-Core: 2, and Max-Depth: 100<sup>22,23</sup>. The sub-networks with highly interconnected regions and their seed genes are the highest degree value in a network<sup>22,24</sup>.

#### Gene regulatory network

**The identification of miRNAs suppressing DEGs:** We obtained experimentally validated miRNA-target gene interactions from miRTarBase release 8.0 (<http://miRTarBase.mbc.nctu.edu.tw/>) and miRecords (<http://c1.accurascience.com/miRecords/>). The miRTarBase is a curated database from experimentally validated miRNA-target gene interactions and includes more than 13,404 validated interactions<sup>25</sup>. The miRecords is an experimental database of validated miRNA-target interaction<sup>26</sup>.

#### The identification of transcription factors (TFs) regulating DEGs

We extracted TFs regulating DEGs from TRANSFACT (<http://genexplain.com/transfac/>) and TRRUST v2 ([www.grnpedia.org/trrust/](http://www.grnpedia.org/trrust/)) databases. TRANSFACT is a curated database of eukaryotic transcription factors<sup>27</sup>. TRRUST is validated experimental data from 800 and 828 TFs for humans and mice, respectively<sup>28</sup>.

#### The identification of miRNAs suppressing TFs

We obtained miRNAs regulation TFs from miRTarBase and miRecords databases.

#### The identification of TFs regulating miRs

We extracted TFs regulating miRNAs of TransmiR v2.0 (<http://www.cuilab.cn/transmir>). This database is a curated data of 3730 TF-miRNA regulations related to 19 species from  $>8000$  publications<sup>29</sup>.

#### GRN construction and motif detection

The network motifs are highly significant patterns that include molecular interactions and biological functions<sup>30,31</sup>. To identify the regulatory motifs, we obtained regulatory relationships (TF-miRNAs, TF-Gene, miRNA-Gene, and miRNA-TF). We then merged and fed relationships into FANMOD software for obtained motifs with three nodes. FANMOD is a tool for detecting motifs in a big network and colored motifs analysis. This tool uses the RAND-ESU novel algorithm<sup>32</sup>. The 3-node motifs were generated randomly 1000 times and compared with the input network. The 3-node motifs with Z-score  $>2.0$  and  $p < 0.05$  were selected as significant motifs<sup>33</sup>. The motifs with the same ID were merged and created a unique motif. Four relationships were merged in Cytoscape 3.5.1 software and motifs were extracted from GRNR. Finally, 10% of nodes with a high degree of centrality and closeness centrality were identified in the new network. The intersection of 10% of nodes with high degree, betweenness centrality, and closeness centrality was identified as the final network for further analysis.

#### Functional analysis

We performed enrichment analysis for Gene Ontology (biological process, molecular function, and cellular component) and Kyoto Encyclopedia of Genes and Genomes (KEGG) on DEGs using WebGestalt (<http://www.webgestalt.org>)<sup>34</sup>. The gene ontology and KEGG pathways with  $p < 0.05$  were identified as statistically significant terms. Finally, the key genes, biological processes, and functional pathways were discussed and verified by the experimental studies available in the literature review to identify active mechanisms and probable side effects related to this drug.

#### Confirmation of critical genes

The Gene Expression Profiling Interactive Analysis 2 (GEPIA2) is a web server for interactive analysis including, differential expression analysis, profiling plotting, correlation analysis, patient survival analysis, similar gene detection, and dimensionality reduction

analysis<sup>35</sup>. This web resource analyzes RNA sequencing data using a standard processing pipeline based on GTEx (Genotype-Tissue Expression) and TCGA (The Cancer Genome Atlas) (<http://gepia.cancer-pku.cn/>). We used GEPIA2 to evaluate the relationship between our critical genes and cancer development by Kaplan-Meier and boxplots.

### Results

#### Change in gene expression related to PC (LNCaP cell line)/TH

This study first investigated how DEGs and their related TF/miRs regulate gene ontology and pathways related to PC in response to TH, using PPIN and GRN. We identified the DEGs based on  $p < 0.05$  and  $\log_2$  fold change  $> 0.5$  and  $< -0.5$ . The obtained DEGs include 8 down-regulated genes and 30 up-regulated genes used for further analysis. Supplementary table S1 reported these DEGs.

#### PPIN construction and topological analysis

We obtained the PPIN using the Bisogenet app (HPRD) and STRING databases. These networks merged to create a PPIN. The PPIN was visualized and

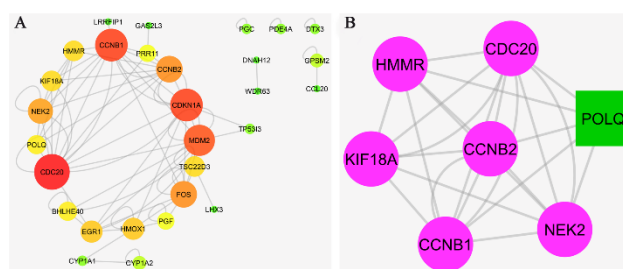


Figure 2. PPI network and MCODE cluster. A) The nodes with a high degree are shown with a bigger size and the color of dark red. B) The green node represents the seed gene.

topologically analyzed by Cytoscape software. This PPIN had 38 nodes and 79 edges. The properties network included a clustering coefficient of 0.301, network diameter of 6, network density of 0.077, and shortest path of 466 (33%). The DEGs with degree  $> 1$  were investigated as critical genes. The list of these genes with a degree  $> 1$  is represented in figure 2A and table 1. The PPI clusters are highly connected regions of the network. The MCODE app identified these sub-

Table 1. The list of genes with degree  $> 1$  obtained with Network Analyzer plugin in Cytoscape software.

Name of genes	Degree	Betweenness Centrality	Closeness Centrality
CDC20	16	0.16	0.567568
CDKN1A	14	0.163571	0.567568
CCNB1	14	0.295476	0.6
MDM2	13	0.165635	0.552632
CCNB2	10	0.046032	0.5
FOS	10	0.178889	0.567568
NEK2	9	9.52E-04	0.428571
HMOX1	7	0.192063	0.456522
EGR1	7	0.067857	0.525
KIF18A	6	0	0.42
HMMR	6	9.52E-04	0.428571
TSC22D3	6	0.095238	0.411765
BHLHE40	5	0	0.388889
POLQ	5	0	0.42
PGF	4	0	0.388889
PRR11	4	0.095238	0.42
CYP1A2	3	0	0.25
GPSM2	3	0	1
CYP1A1	2	0.095238	0.328125
TP53I3	2	0	0.396226
PGC	2	0	0
PDE4A	2	0	0
DTX3	2	0	0
LRRFIP1	1	0	0.381818
LHX3	1	0	0.295775
CCL20	1	0	1
GAS2L3	1	0	0.3
DNAH12	1	0	1
WDR63	1	0	1



Table 2. Summary of four types of regulatory relationships among miRNA-gene, TF-Gene, miR-TF, and TF-miR interactions

Relationship	Number of pairs	Number of genes	Number of TFs	Number of miRNAs
miRNA-gene	1097	29	-	771
miR-TF	8169	-	206	1533
TF-Gene	858	38	224	-
TF-miR	2008	-	354	320

networks in Cytoscape software. One sub-network with seven nodes, 24 edges, and a score of 6.667 was identified as a cluster with highly connected regions in the PPIN. The *PLOQ* gene was identified as a seed node in this cluster (Figure 2B).

**Gene regulatory network construction and module detection**

We collected four regulatory relationships (miR-gene, miR-TF, TF-gene, and TF-miR) for DEGs (Table 2, Supplementary Table S2). We imported and merged the four regulatory relationships in Cytoscape software as GRN. The four relationships fed into FANMOD

software and 3-node motifs of GRN with at least two different color edges and  $p < 0.05$  and  $Z\text{-score} > 2$  were selected as motifs for further analysis (Figure 3).

We then merged the motif-related sub-networks with the same FANMOD ID and extracted them from GRN. Finally, shared genes of 10% betweenness centrality, closeness centrality, and genes with the highest degree were selected as crucial genes. Figure 4 depicts essential genes.

**Gene ontology and functional pathways enrichment analysis**

The enrichment analysis on the DEGs (38 genes) was performed using Webgestalt ( $p < 0.05$ ). The biological processes included response to immobilization stress, response to oxygen levels, regulation of cell cycle, and response to a toxic substance. The molecular function term of DEGs was cyclin-dependent protein kinase activity, and most of the DEGs were presented in the spindle. The significant KEGG pathways were the p53 signaling pathway, cell cycle, parathyroid hormone synthesis, secretion and action, and FoxO signaling pathway. These results are represented in table 3. Finally, we investigated the role of crucial genes and biological processes, and KEGG pathways in probable side effects created by this drug using a literature review.

**Confirmation of *POLQ*, *EGR1*, *CDKN1A*, *FOS*, *MDM2*, *CDC20*, *CCNB1*, and *CCNB2* critical genes using GEPIA2**

The network analysis results showed *POLQ*, *EGR1*, *CDKN1A*, *FOS*, *MDM2*, *CDC20*, *CCNB1*, and *CCNB2* as critical genes in Levrier C *et al* study, in which a human PC cell line was treated with TH. In this study, Kaplan-Meier and box plots were used to demonstrate critical genes of network analysis. Using boxplot, we demonstrated the expression level of critical genes in

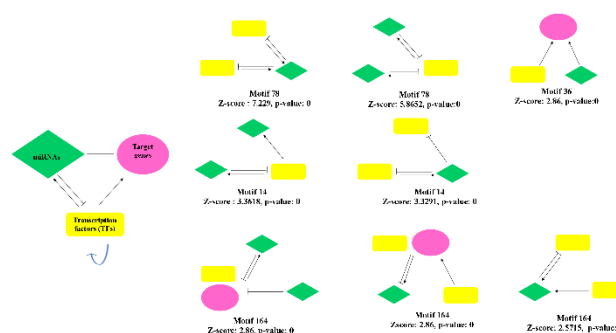


Figure 3. The regulatory motifs are consisting of genes, TFs, and miRNAs were detected by FANMOD software with their Z-score and p-value. Four relationships miRNA-gene (miRNA represses gene expression); miRNA-TF (miRNA represses TF gene expression); TF-gene (TF regulates genes expression); and TF-miRNA (TF regulates miRNA expression).

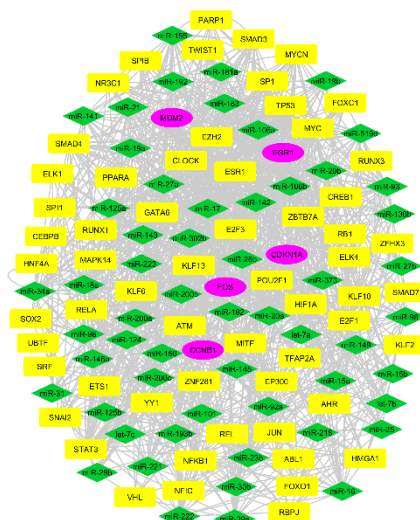


Figure 4. Gene regulatory network. The shared genes of 10% highest degree, betweenness centrality, and closeness centrality merged motifs. The yellow rectangle is transcription factors, the green diamond show miRNAs, and the pink circular represents the genes.

PC, a significant over-expression of *CDC20* and *CCNB1* in PC in comparison with normal tissue, and a non-significant expression level of *POLQ*, *EGR1*, *CDKN1A*, *FOS*, *MDM2*, and *CCNB2* genes (Figure 5). Figure 6 compares the overall survival rate of PC patients due to the high and low expression of *POLQ*, *EGR1*, *CDKN1A*, *FOS*, *MDM2*, *CDC20*, *CCNB1*, and *CCNB2* genes. The results determined that among crit-



### Critical Genes Response to Thalictuberine in Prostate Cancer

Table 3. The biological processes, molecular function, cellular components, and KEGG pathways identified using the Webgestalt tool ( $p < 0.05$ )

Gene set	Description	p-value	FDR
<b>Biological process</b>			
GO:0035902	Response to immobilization stress	4.42E-07	0.000375
GO:0070482	Response to oxygen levels	1.15E-05	0.003939
GO:0044772	Mitotic cell cycle phase transition	1.39E-05	0.003939
GO:0045787	Positive regulation of cell cycle	2.26E-05	0.004714
GO:1901987	Regulation of cell cycle phase transition	2.77E-05	0.004714
GO:0046685	Response to arsenic-containing substance	4.7E-05	0.006661
GO:0071241	Cellular response to inorganic substance	0.000123	0.013235
GO:0044839	Cell cycle G2/M phase transition	0.000134	0.013235
GO:0009636	Response to toxic substance	0.00014	0.013235
GO:0010038	Response to metal ion	0.000167	0.014166
GO:1902850	Microtubule cytoskeleton organization involved in mitosis	0.000255	0.019706
GO:0033013	Tetrapyrrole metabolic process	0.000359	0.025444
GO:0010948	Negative regulation of cell cycle process	0.000461	0.030111
GO:0007051	Spindle organization	0.000742	0.04502
GO:0033002	Muscle cell proliferation	0.000859	0.047505
GO:0031099	Regeneration	0.000894	0.047505
<b>Molecular function</b>			
GO:0097472	Cyclin-dependent protein kinase activity	0.00014	0.039447
<b>Cellular component</b>			
GO:0005819	Spindle	0.000159	0.027297
<b>KEGG pathway</b>			
hsa04115	p53 signaling pathway	1.91E-06	0.000623
hsa04110	Cell cycle	2.78E-05	0.004527
hsa04928	Parathyroid hormone synthesis, secretion and action	0.000255	0.027711
hsa04068	FoxO signaling pathway	0.000589	0.048002

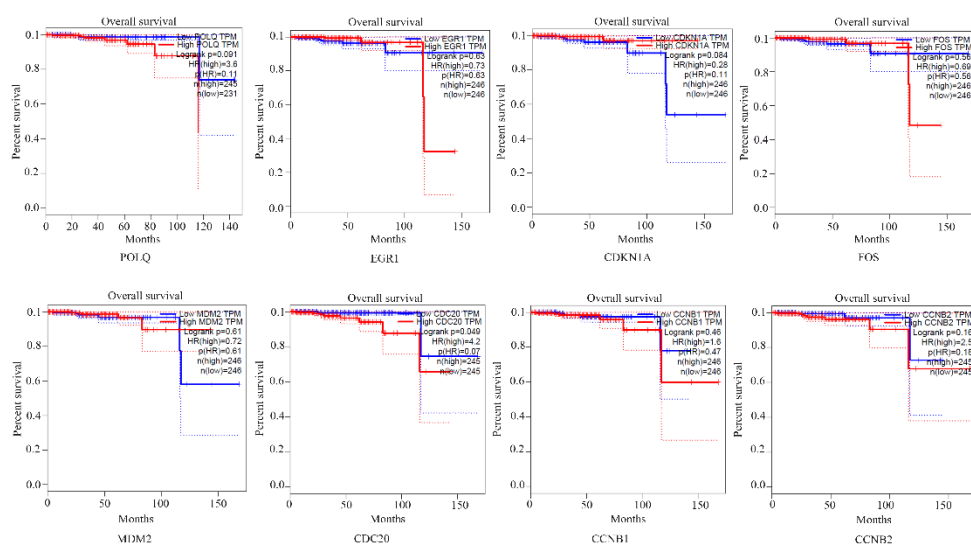


Figure 5. The boxplot revealed the different expression levels of critical genes in prostate cancer rather than normal samples (GEPiA2). PARD, prostate adenocarcinoma.

ical genes the decrease in *CDKN1A* and *MDM2* expression harmed the survival of the patients. Besides, over-expression of *EGR1*, *FOS*, and *CCNB1* also reduced the survival ability of the patients.

### Discussion

PC is the second most common cancer in developed countries and the fifth most common cause of cancer death. One of the challenges of treating this disease is

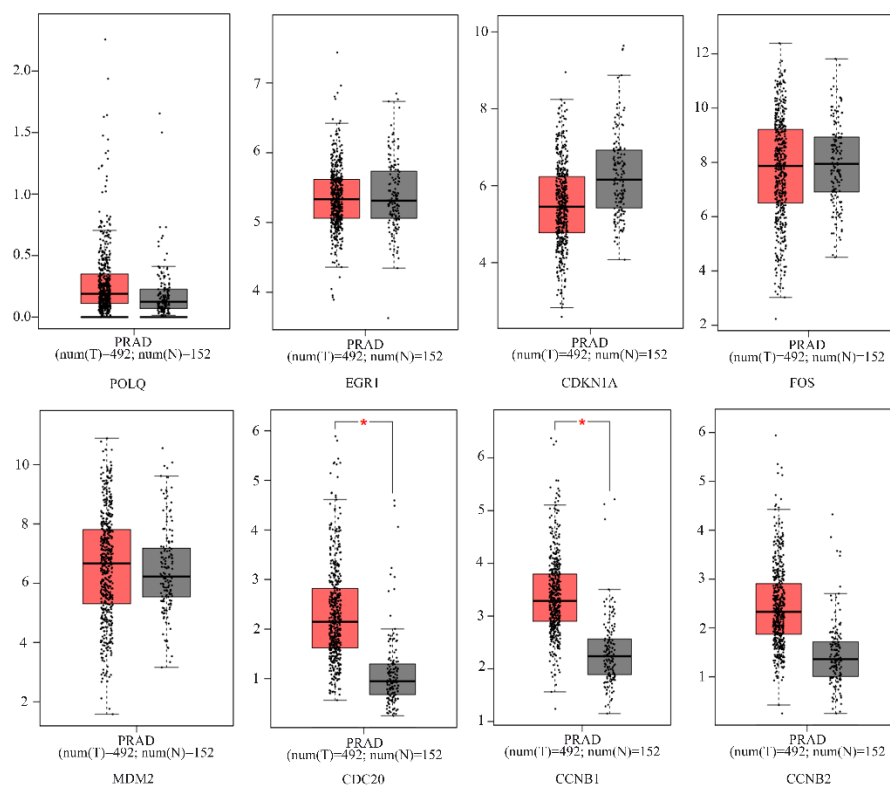


Figure 6. The Kaplan-Meier plot shows the eight critical genes effects on the overall survival rate of prostate cancer patients (by GEPIA2). Low and high TPM are represented in all graphs.

cell resistance to chemotherapy drugs. Uncontrolled mitosis is the cancer cell mechanism, requiring the development of microtubule-targeting drugs. TH causes cell death by arresting mitosis and also reduces the effects of drug resistance. TH is a natural product extracted from the Australian plant *Hernandia Albiflora* Kubitzki. This novel anti-mitotic agent in prostate and cervical cancer cells escapes from the resistance mechanisms<sup>4</sup>. There is still no comprehensive data on the functional mechanisms of TH in the treatment of PC. For further experimental examinations, systems biology and bioinformatics studies can help to identify critical genes and mechanisms mediating PC in response to TH.

Recently, network-based approaches have prepared powerful tools to identify the molecular function and complex processes of diseases by regulatory and MCODE clusters in GRN and PPIN. The nodes participating in these specific regions usually have key roles in cellular functions<sup>36</sup>. The present study is the first *in silico* analysis to predict critical genes and molecular mechanisms of PCs treated with TH and its side effects. In this study, eight genes as critical nodes were introduced to PPIN and GRN in the LNCaP cell line in response to TH. Our analysis of PPIN and GRN of the LNCaP cell line in response to TH demonstrated that *POLQ*, *EGRI*, *CDKN1A*, *FOS*, *CDC20*, *MDM2*,

*CCNB1*, and *CCNB2* are critical genes. The functional enrichment analysis indicated that TH is involved in response to oxygen levels, immobilization stress and toxic substance, cell cycle regulation, regeneration, p53 signaling pathway, parathyroid hormone synthesis, secretion, and action, and FoxO signaling pathway.

*POLQ*, DNA polymerase  $\theta$ , a versatile enzyme involved in DNA repair pathways, will be up-regulated in the PC cell line in response to TH. This gene was identified as a seed gene in the MCODE cluster of PPIN. This factor is involved in especially error-prone double-stranded fractures. DNA repair genes are often mutated in cancer cells and control of these genes will be a targeted therapeutic strategy expected from this drug<sup>37</sup>. The study of Whole-exome sequencing of Indian PC by Febina Ravindran *et al* in 2022 showed *POLQ* can be introduced as the druggable target in the treatment of PC<sup>38</sup>.

*EGRI*, *CDKN1A*, *CCNB1*, *CCNB2*, *MDM2*, and *FOS* were identified as hub-bottleneck in PPIN and GRN. *EGRI* is an essential factor that will be down-regulated in response to TH in the PC cell line. This gene is an oncogenic transcription factor associated with PC. *EGRI* regulates tumor suppressors such as PTEN, P53, TGF $\beta$ 1, and fibronectin. PTEN and P53 are inactive in a majority of cancers. Defects in these suppressor genes are due to deregulated *EGRI*<sup>39</sup>.

Lechen Li showed that *EGR1* can promote metastasis and regulate angiogenesis and osteoclastogenesis in PC<sup>40</sup>. Therefore, down-regulation of *EGR1* in PC treated with TH could help to treat patients.

P21 (*CDKN1A*), a Cyclin-Dependent Kinase Inhibitor (*CDKI*), is one of the up-regulated genes involved in the mechanism of this drug. This gene plays a pivotal role in cell cycle development regulating CDK activity. P21 is known for its dual function. On the one hand, it acts as a tumor suppressor gene that induces cell cycle arrest. On the other hand, it will increase tumorigenesis<sup>41</sup>. Sivonova *et al* reported that p53 and p21 polymorphisms are associated with pc<sup>42</sup>. Eastham JA *et al* reported up-regulation of *CDKN1A* inhibited PC growth both *in vitro* and *in vivo*<sup>14</sup>. Therefore, we hypothesize that the role of *CDKN1A* tumor suppressor is probably a functional mechanism of TH in treating PC.

*FOS* is another key up-regulated gene in response to TH in the PC cell line that acts as a tumor suppressor gene during the progression and invasion of PC and in the prominent mesenchymal transmission pathways K Ras, JAK-STAT, and epithelial<sup>43</sup>. Shankar E *et al* reported that androgenic control of c-FOS can be introduced as a targeted therapy in PC<sup>44</sup>. We suggest that TH can probably inhibit the progression and invasion of PC by up-regulating the *FOS* gene.

*CDC20* is a hub-bottleneck up-regulated protein in PPIN. Abnormal expression of the Cell Division Cycle20 (*CDC20*) is associated with malignant progression and poor prognosis of cancers. *CDC20* activates the anaphase-stimulating cyclosome complex (*APC/C*) which increases mitotic output through protein proteasome degradation and ubiquitination, and inhibits metastasis, increasing cell cycle arrest<sup>45,46</sup>. Liang Dai *et al* reported that *CDC20* contributes more to progression and migration in metastatic Prostate Cancer (mPCa) compared with PC and can be used as a therapeutic target in mPCa<sup>47</sup>.

*MDM2* can ubiquitinate the P53 protein and deliver it to the proteasome. Its overexpression is associated with resistance to chemotherapy in malignancies<sup>48</sup>. Inhibition of *MDM2* leads to P53 activation and can inhibit growth and metastasis independent of P53 and androgen receptors<sup>49</sup>. Leite KR *et al* reported abnormal expression of oncoprotein *MDM2* in PC. This study showed overexpression of *MDM2* has a role in prostate carcinogenesis<sup>50</sup>.

*CCNB1* and *CCNB2* are type B cyclins and are essential components of the cell cycle regulatory system. *CCNB2* is linked to the Fox and P53 signaling pathways and is a critical enzyme that mediates the progression of cell cycle-related oxidation. In the FoxO signaling pathway, *CCNB2* may bind to TGF  $\beta$ -R II and be involved in growth factor-b-conversion and mediated cell cycle control<sup>51</sup>. Gomez LA *et al* in 2007 reported a positive correlation between cyclin B1 protein and inducing apoptosis<sup>52</sup>. So, Shen H *et al* showed

*CCNB1* and *CCNB2* genes are key factors in cell cycle pathways and the development of PC. These factors can suggest a novel prognosis and treatment biomarkers<sup>53</sup>. The molecules (*POLQ*, *CDC20*, *MDM2*, *CCNB1*, and *CCNB2*) have shown a slight increase in the LNCaP cell line treated with TH but studies have shown an increase in the expression of these molecules is associated with the progression of PC. Therefore, an experimental investigation is necessary to validate their expression and explain their possible roles in the treatment of PC with TH.

It has been shown that TH has effects on functional mechanisms, including response to oxygen levels, regulation of cell cycle, response to immobilization stress, response to a toxic substance, regeneration, p53 signaling pathway, parathyroid hormone synthesis, secretion and action, and FoxO signaling pathway. Low oxygen levels characterize prostate tumors, hypoxia is associated with prostate tumor progression<sup>54</sup>. In hypoxia, prostate tumor cells are overly resistant to chemotherapy drugs due to mutation or inactivation of P53 or BCL2. Drug resistance can be partially attributed to increased multidrug resistance carriers, including P-glycoprotein (PGP)<sup>55</sup>. Jing X *et al* in 2019 reported that hypoxia targeting might be effective in cancer treatment<sup>56</sup>. So in 1991, Teicher BA *et al* showed a relationship between tumor oxygenation and response to radiation which could improve cancer treatment<sup>57</sup>. Therefore, we hypothesize that TH can decrease the resistant drugs and increase apoptosis by the biological process of response to oxygen levels.

The other functional mechanism of this drug is regulating the cell cycle. The mechanism for anti-mitotic medicines is to disrupt the mitotic spindle complex, which activates the spindle assembly checkpoint, causing mitotic cessation and subsequent death of tumor cells in mitosis or slipping into the post-mitotic phase and exiting from mitosis. Levrier C *et al* in 2018 reported that TH indirectly inhibits tubulin-associated protein and regulates the cell cycle<sup>4</sup>. Our study showed that TH in addition to proliferation can regulate repair, apoptosis, and metastasis in PC. However, experimental studies are needed to validate our results. We should also consider that in addition to cancer cells, normal cells have a high proliferative capacity and this drug may affect normal cells as well.

One of the reasons for resistance to cancer treatment is the continuous activation of the nervous system caused by stress, accelerating tumor growth through  $\beta$ 2 adrenergic receptor signaling. Watabe T *et al* showed that the activation of  $\beta$ 2 adrenergic receptor signaling by increased epinephrine in response to immobilization stress in PC delays the expression of drug-induced apoptosis-regulating proteins (*MCL1*)<sup>58</sup>. On the other hand, androgen-induced maturation and regeneration are associated with the growth and metastasis of cells in PC<sup>59,60</sup>. Therefore, we predict that drug could affect PC treatment by regulating these mechanisms.



*P53* is also a tumor suppressor gene whose mutation is associated with more significant resistance to treatment. Rahman MA *et al* showed that although *P53* typically inhibits autophagy, it has a dual role as a positive or negative regulator of autophagy in cancer. It may travel to the nucleus in response to stress or hunger and activate autophagy<sup>61</sup>. Autophagy deregulation is a feature of tumor progression and its suppression with chemical treatments of potential cancer particles<sup>62</sup>. Therefore, it can be concluded that TH activates autophagy in PC through *P53* mediation. The experimental investigation is necessary for the validation of this mechanism.

The synthesis, secretion, and action of the parathyroid hormone are functions regulated by this drug. Cancer progression and mortality are also associated with elevated serum levels of Parathyroid Hormone (PTH), vitamin D, and calcium metabolism<sup>63</sup>. PTH-related protein (PTHrP), a bone metastasis agent, is reported to produce the phospholipase activation pathway (PLC/PLA2/PLD) from IP3, which in turn activates IP3R (inositol 1, 4, 5-trisphosphate receptors). The other role of this hormone is to regulate calcium levels in the blood. Studies on its function related to PTEN in the transport of calcium from the cytosol to the mitochondria have shown that the competitive binding of these components regulates calcium secretion and controls apoptosis<sup>64</sup>. Schwartz GG *et al* showed that increased expression of the PTH receptor and PTH promotes PC cells' growth and invasion to the bone<sup>62</sup>. Brun VH *et al*, in 2021, reported that severe hypercalcemia generated by parathyroid hormone has a critical role in rectal cancer metastasis<sup>65</sup>. Therefore, one of the TH roles can be regulating parathyroid hormone levels and preventing metastasis. The reduction of parathyroid hormone is associated with hypocalcemia which causes muscle cramping, abdominal pains, and paresthesia<sup>66</sup>. These indications can be considered as side effects of the drug. Given the importance of this mechanism and the lack of experimental studies about its mediation in response to TH, we offer experimental investigation to identify the role of this factor in PC treatment.

Fork Head Box (*Foxs*) has many effects on stem cell growth, metabolism, and maintenance. Also, it acts as a tumor suppressor in the regulation of essential genes for cell proliferation, cell death, angiogenesis, and cell migration and metastasis<sup>67</sup>. The loss of FOXO proteins function is critical in tumorigenesis<sup>68</sup>. Therefore, this drug can activate the FoxO signaling pathway and decrease growth and metastasis in PC. Jiramongkol *et al* showed that genetic disorders and metabolic diseases could cause the deregulation of the FoxO signaling pathway. These disorders can be introduced as side effects<sup>69</sup>. In this study, we evaluated the relationship between critical genes and PC using GEPIA2 datasets. The boxplot represented significant over-expression of *CDC20* and *CCNB1* in PC compared to normal pros-

tate tissue (Figure 5). Besides, the overall survival indicated that among critical genes a decrease in *CDKN1A* and *MDM2* expression and overexpression of *EGR1*, *FOS*, and *CCNB1* is associated with reduced survival ability in patients.

We suggest that TH regulates PC proliferation, repair, apoptosis, and metastasis. The muscle cramping, abdominal pains, and paresthesia regulated by the parathyroid hormone, and metabolic diseases regulated by FoxO signaling pathway have probably side effects mediated by this drug in our model. The expression of some genes that have an important role in the proliferation and metastasis of PC, increases in the cells treated with this drug, therefore, *in vitro* and *in vivo* studies are required to validate our results.

### Conclusion

This study used a network-based approach (PPIN and GRN) to identify hubs-bottlenecks, 3-nodes motifs consisting of target genes, miRNAs, and TFs, and molecular mechanisms and pathways in PC in response to TH. *POLQ*, *EGR1*, *CDKN1A*, *FOS*, *MDM2*, *CDC20*, *CCNB1*, and *CCNB2* were determined as critical DEGs, mediating response to TH in PC. Response to oxygen levels, regeneration, immobilization stress, and a toxic substance, regulation of cell cycle, p53 signaling pathway, synthesis, secretion, and action of parathyroid hormone, and FoxO signaling pathway are essential biological processes and functional pathways related to TH in the PC. Besides, muscle cramping, abdominal pains, paresthesia, and metabolic diseases were determined as pathways possibly mediating its side effects. We recommended *in vitro* and *in vivo* investigation for validation of our results.

### Acknowledgement

This study is related to project NO.1399/62246 of the Student Research Committee, Shahid Beheshti University of Medical Sciences, Tehran, Iran. We also appreciate the "Student Research Committee" and "Research and Technology Chancellor" at Shahid Beheshti University of Medical Sciences for their financial support of this study.

### Conflict of interest

The authors declare no conflicts of interest.

### References

1. Smith-Palmer J, Takizawa C, Valentine W. Literature review of the burden of prostate cancer in Germany, France, the United Kingdom and Canada. BMC Urol 2019 Dec;19(1):1-6.
2. Hwang C. Overcoming docetaxel resistance in prostate cancer: a perspective review. Ther Adv Med Oncol 2012 Nov;4(6):329-40.
3. Ilic D, Neuberger MM, Djulbegovic M, Dahm P. Screening for prostate cancer. Cochrane Database Syst Rev 2013(1).

4. Levrier C, Rockstroh A, Gabrielli B, Kavallaris M, Lehman M, Davis RA, et al. Discovery of thalichtherine as a novel antimetabolic agent from nature that disrupts microtubule dynamics and induces apoptosis in prostate cancer cells. *Cell Cycle* 2018 Mar 4;17(5):652-68.
5. Chuang SC, Chen HC, Sun CW, Chen YA, Wang YH, Chiang CJ, et al. Phthalate exposure and prostate cancer in a population-based nested case-control study. *Environ Res* 2020 Feb 1;181:108902.
6. Kaler J, Hussain A, Haque A, Naveed H, Patel S. A comprehensive review of pharmaceutical and surgical interventions of prostate cancer. *Cureus* 2020 Nov 22;12(11).
7. Pienta KJ, Esper PS. Risk factors for prostate cancer. *Ann Intern Med* 1993 May 15;118(10):793-803.
8. Litwin MS, Tan HJ. The diagnosis and treatment of prostate cancer: a review. *JAMA* 2017 Jun 27;317(24):2532-42.
9. Nurgali K, Jagoe RT, Abalo R. Editorial: Adverse effects of cancer chemotherapy: Anything new to improve tolerance and reduce sequelae?. *Front Pharmacol* 2018 Mar 22;9:245.
10. Zachariou M, Minadakis G, Oulas A, Afxenti S, Spyrou GM. Integrating multi-source information on a single network to detect disease-related clusters of molecular mechanisms. *J Proteomics* 2018 Sep 30;188:15-29.
11. Karns R, Tabar S, Bardes EE, Jegga AG, Aronow BJ. How Do Bioinformatics Approaches Apply to the Analysis and Understanding of Disease Pathology?.
12. Golubnitschaja O, Baban B, Boniolo G, Wang W, Bubnov R, Kapalla M, et al. Medicine in the early twenty-first century: paradigm and anticipation-EPMA position paper 2016. *EPMA J* 2016 Dec;7(1):1-3.
13. Sundaresan L, Kumar P, Chatterjee S. Mechanistic insights into the differential effects of thalidomide and lenalidomide in metastatic prostate cancer. *Future Oncol* 2018 Oct;14(23):2383-401.
14. Eastham JA, Hall SJ, Sehgal I, Wang J, Timme TL, Yang G, et al. In vivo gene therapy with p53 or p21 adenovirus for prostate cancer. *Cancer Res* 1995 Nov 15;55(22):5151-5.
15. Latchman DS. Inhibitory transcription factors. *Int J Biochem Cell Biol* 1996 Sep 1;28(9):965-74.
16. Shen-Orr SS, Milo R, Mangan S, Alon U. Network motifs in the transcriptional regulation network of *Escherichia coli*. *Nat Genet* 2002 May;31(1):64-8.
17. Nevedomskaya E, Baumgart SJ, Haendler B. Recent advances in prostate cancer treatment and drug discovery. *Int J Mol Sci* 2018 May 4;19(5):1359.
18. Barrett T, Wilhite SE, Ledoux P, Evangelista C, Kim IF, Tomashevsky M, et al. NCBI GEO: archive for functional genomics data sets—update. *Nucleic Acids Res* 2012 Nov 26;41(D1):D991-5.
19. Shannon P, Markiel A, Ozier O, Baliga NS, Wang JT, Ramage D, et al. Cytoscape: a software environment for integrated models of biomolecular interaction networks. *Genome Res* 2003 Nov 1;13(11):2498-504.
20. Kargar M, An A. The effect of sequence complexity on the construction of protein-protein interaction networks. In: International Conference on Brain Informatics 2010 Aug 28 (pp. 308-319). Springer, Berlin, Heidelberg.
21. Ma H, Zeng AP. Reconstruction of metabolic networks from genome data and analysis of their global structure for various organisms. *Bioinformatics* 2003 Jan 22;19(2):270-7.
22. Bader GD, Hogue CW. An automated method for finding molecular complexes in large protein interaction networks. *BMC Bioinformatics* 2003 Dec;4(1):1-27.
23. Dehghan Z, Mohammadi-Yeganeh S, Sameni M, Mirmotalebisohi SA, Zali H, Salehi M. Repurposing new drug candidates and identifying crucial molecules underlying PCOS pathogenesis based on bioinformatics analysis. *Daru* 2021 Dec;29(2):353-66.
24. Mirmotalebisohi SA, Sameni M, Dehghan Z, Khazaei-Poul Y, Sepehrizadeh Z, Faramarzi MA, et al. Deciphering the molecular pathogenesis behind neurological manifestations of SARS-CoV-2 and drug repurposing. A systems biology approach. 2021.
25. Huang HY, Lin YC, Li J, Huang KY, Shrestha S, Hong HC, et al. miRTarBase 2020: updates to the experimentally validated microRNA–target interaction database. *Nucleic Acids Res* 2020 Jan 8;48(D1):D148-54.
26. Xiao F, Zuo Z, Cai G, Kang S, Gao X, Li T. miRecords: an integrated resource for microRNA–target interactions. *Nucleic Acids Res* 2009 Jan 1;37(suppl\_1):D105-10.
27. Wingender E, Dietze P, Karas H, Knüppel R. TRANSFAC: a database on transcription factors and their DNA binding sites. *Nucleic Acids Res* 1996 Jan 1;24(1):238-41.
28. Han H, Cho JW, Lee S, Yun A, Kim H, Bae D, et al. TRRUST v2: an expanded reference database of human and mouse transcriptional regulatory interactions. *Nucleic Acids Res* 2018 Jan 4;46(D1):D380-6.
29. Tong Z, Cui Q, Wang J, Zhou Y. TransmiR v2. 0: an updated transcription factor-microRNA regulation database. *Nucleic Acids Res* 2019 Jan 8;47(D1):D253-8.
30. Ahnert SE, Fink TM. Form and function in gene regulatory networks: the structure of network motifs determines fundamental properties of their dynamical state space. *J R Soc Interface* 2016 Jul 31;13(120):20160179.
31. Defoort J, Van de Peer Y, Vermeirssen V. Function, dynamics and evolution of network motif modules in integrated gene regulatory networks of worm and plant. *Nucleic Acids Res* 2018 Jul 27;46(13):6480-503.
32. Wernicke S, Rasche F. FANMOD: a tool for fast network motif detection. *Bioinformatics* 2006 May 1;22(9):1152-3.
33. Farahani M, Rezaei-Tavirani M, Zali H, Arefi Oskouie A, Omidi M, Lashay A. Deciphering the transcription factor-microRNA-target gene regulatory network associated with graphene oxide cytotoxicity. *Nanotoxicology* 2018 Oct 21;12(9):1014-26.
34. Liao Y, Wang J, Jaehnic EJ, Shi Z, Zhang B. WebGestalt 2019: gene set analysis toolkit with revamped UIs and APIs. *Nucleic Acids Res* 2019 Jul 2;47(W1):W199-205.
35. Tang Z, Li C, Kang B, Gao G, Li C, Zhang Z. GEPIA: a web server for cancer and normal gene expression profil-

- ing and interactive analyses. *Nucleic Acids Research*. 2017 Jul 3;45(W1):W98-102.
36. Roy S, Raj M, Ghosh P, Das SK. Role of motifs in topological robustness of gene regulatory networks. In 2017 IEEE International Conference on Communications (ICC) 2017 May 21 (pp. 1-6). IEEE.
  37. Schrepf A, Slyskova J, Loizou JI. Targeting the DNA repair enzyme polymerase  $\theta$  in cancer therapy. *Trends Cancer* 2021 Feb 1;7(2):98-111.
  38. Ravindran F, Jain A, Desai S, Menon N, Srivastava K, Bawa PS, et al. Whole-exome sequencing of Indian prostate cancer reveals a novel therapeutic target: POLQ. *J Cancer Res Clin Oncol* 2022 Jun 23:1-2.
  39. Baron V, Adamson ED, Calogero A, Ragona G, Mercola D. The transcription factor Egr1 is a direct regulator of multiple tumor suppressors including TGF $\beta$ 1, PTEN, p53, and fibronectin. *Cancer Gene Ther* 2006 Feb;13(2):115-24.
  40. Li L, Ameri AH, Wang S, Jansson KH, Casey OM, Yang Q, et al. EGR1 regulates angiogenic and osteoclastogenic factors in prostate cancer and promotes metastasis. *Oncogene* 2019 Aug;38(35):6241-55.
  41. Jain AK, Raina K, Agarwal R. Deletion of p21/Cdkn1a confers protective effect against prostate tumorigenesis in transgenic adenocarcinoma of the mouse prostate model. *Cell Cycle* 2013 May 15;12(10):1598-604.
  42. Sivoňová MK, Vilčková M, Kliment J, Mahmood S, Jurečeková J, Dušenková S, et al. Association of p53 and p21 polymorphisms with prostate cancer. *Biomed Rep* 2015 Sep 1;3(5):707-14.
  43. Riedel M, Berthelsen MF, Cai H, Haldrup J, Borre M, Paludan SR, et al. In vivo CRISPR inactivation of Fos promotes prostate cancer progression by altering the associated AP-1 subunit Jun. *Oncogene* 2021;40(13):2437-47.
  44. Shankar E, Song K, Corum SL, Bane KL, Wang H, Kao HY, et al. A signaling network controlling androgenic repression of c-Fos protein in prostate adenocarcinoma cells. *J Biol Chem* 2016 Mar 11;291(11):5512-5526.
  45. Zhang Q, Huang H, Liu A, Li J, Liu C, Sun B, et al. Cell division cycle 20 (CDC20) drives prostate cancer progression via stabilization of  $\beta$ -catenin in cancer stem-like cells. *EBioMedicine* 2019;42:397-407.
  46. Li K, Mao Y, Lu L, Hu C, Wang D, Si-Tu J, et al. Silencing of CDC20 suppresses metastatic castration-resistant prostate cancer growth and enhances chemosensitivity to docetaxel. *International Int J Oncol* 2016 Oct;49(4):1679-85.
  47. Dai L, Song ZX, Wei DP, Zhang JD, Liang JQ, Wang BB, et al. CDC20 and PTTG1 are important biomarkers and potential therapeutic targets for metastatic prostate cancer. *Adv Ther* 2021 Jun;38(6):2973-89.
  48. Hou H, Sun D, Zhang X. The role of MDM2 amplification and overexpression in therapeutic resistance of malignant tumors. *Cancer Cell Int* 2019 Aug 22;19:216.
  49. Feng FY, Zhang Y, Kothari V, Evans JR, Jackson WC, Chen W, et al. MDM2 inhibition sensitizes prostate cancer cells to androgen ablation and radiotherapy in a p53-dependent manner. *Neoplasia* 2016 Apr;18(4):213-22.
  50. Leite KR, Franco MF, Srougi M, Nesrallah LJ, Nesrallah A, Bevilacqua RG, et al. Abnormal expression of MDM2 in prostate carcinoma. *Mod Pathol* 2001 May;14(5):428-36.
  51. Huang CG, Li FX, Pan S, Xu CB, Dai JQ, Zhao XH. Identification of genes associated with castration-resistant prostate cancer by gene expression profile analysis. *Mol Med Rep* 2017 Nov;16(5):6803-6813.
  52. Gomez LA, de Las Pozas A, Reiner T, Burnstein K, Perez-Stable C. Increased expression of cyclin B1 sensitizes prostate cancer cells to apoptosis induced by chemotherapy. *Mol Cancer Ther* 2007 May;6(5):1534-43.
  53. Shen H, Guo YL, Li GH, Zhao W, Zhang L. Gene expression analysis reveals key genes and signalings associated with the prognosis of prostate cancer. *Comput Math Methods Med* 2021 Aug 28;2021:9946015.
  54. de Almeida A, Parthimos D, Dew H, Smart O, Wiltshire M, Errington RJ. Aquaglyceroporin-3's expression and cellular localization is differentially modulated by hypoxia in prostate cancer cell lines. *Cells* 2021;10(4):838.
  55. Mamede A, Abrantes AM, Pedrosa L, Casalta-Lopes J, Pires A, Teixo R, et al. Beyond the limits of oxygen: effects of hypoxia in a hormone-independent prostate cancer cell line. *ISRN Oncol* 2013 Sep 12;2013:918207.
  56. Jing X, Yang F, Shao C, Wei K, Xie M, Shen H, et al. Role of hypoxia in cancer therapy by regulating the tumor microenvironment. *Mol Cancer* 2019;18(1):157.
  57. Teicher BA, Herman TS, Hopkins RE, Menon K. Effect of oxygen level on the enhancement of tumor response to radiation by perfluorochemical emulsions or a bovine hemoglobin preparation. *Int J Radiat Oncol Biol Phys* 1991 Sep;21(4):969-74.
  58. Hassan S, Pullikuth A, Nelson KC, Flores A, Karpova Y, Baiz D, et al.  $\beta$ 2-Adrenoreceptor signaling increases therapy resistance in prostate cancer by upregulating MCL1. *Mol Cancer Res* 2020 Dec;18(12):1839-1848.
  59. Watabe T, Lin M, Ide H, Donjacour AA, Cunha GR, Witte ON, et al. Growth, regeneration, and tumorigenesis of the prostate activates the PSCA promoter. *Proc Natl Acad Sci USA* 2002 Jan 8;99(1):401-6.
  60. Oviedo NJ, Beane WS. Regeneration: The origin of cancer or a possible cure *Semin Cell Dev Biol* 2009 Jul;20(5):557-64.
  61. Rahman M, Park MN, Hasanur Rahman Md, Mamunur Rashid Md, Islam R, Jamal Uddin Md, et al. p53 Modulation of autophagy signaling in cancer therapies: perspectives mechanism and therapeutic targets. *Front Cell Dev Biol* 2022 Jan 26;10:761080.
  62. Mathew R, Karantza-Wadsworth V, White E. Role of autophagy in cancer. *Nat Rev Cancer* 2007 Dec;7(12):961-7.
  63. Li H, Ruan G, Li Z, Liu Z, Zheng X, Cheng G, et al. The calcimimetic R-568 induces apoptotic cell death in prostate cancer cells. *J Exp Clin Cancer Res* 2009 Jul 14;28(1):100.

*Critical Genes Response to Thalictuberine in Prostate Cancer*

64. Wang L, Xu M, Li Z, Shi M, Zhou X, Jiang X, et al. Calcium and CaSR/IP3R in prostate cancer development. *Cell Biosci* 2018;8:1-7.
65. Schwartz GG. Prostate cancer, serum parathyroid hormone, and the progression of skeletal metastases. *Cancer Epidemiol Biomarkers Prev* 2008;17(3):478-83.
66. Goltzman D. Physiology of parathyroid hormone. *Endocrinol Metab Clin North Am* 2018 Dec;47(4):743-758.
67. Jiramongkol Y, Lam EW-F. FOXO transcription factor family in cancer and metastasis. *Cancer Metastasis Rev* 2020 Sep;39(3):681-709.
68. Accili D, Arden KC. FoxOs at the crossroads of cellular metabolism, differentiation, and transformation. *Cell* 2004;117:421-6.
69. Farhan M, Wang H, Gaur U, Little PJ, Xu J, Zheng W. FOXO signaling pathways as therapeutic targets in cancer. *Int J Biol Sci* 2017 Jul 6;13(7):815-27.