

## *Conus coronatus* and *Conus frigidus* Venom: A New Source of Conopeptides with Analgesic Activity

Halimeh Rajabi <sup>1,2\*</sup>, Hossein Zolgharnein <sup>2</sup>, Mohammad Taghi Ronagh <sup>2</sup>, Jamshid Amiri Moghaddam <sup>3</sup>, and Max Crüsemann <sup>4</sup>

1. Abadan University of Medical Sciences, Abadan, Iran

2. Khorramshahr University of Marine Science and Technology, Khorramshahr, Iran

3. Leibniz Institute for Natural Product Research and Infection Biology- Hans Knöll Institute, Jena, Germany

4. Institute for Pharmaceutical Biology, University of Bonn, Bonn, Germany

### Abstract

**Background:** Cone snails are a natural source of complex peptides with analgesic properties called conotoxins. These peptides are secreted in a complex venom mixture and are predominantly smaller than 5 *kDa*. The present study aimed to document the analgesic activity of two species of *Conus coronatus* (*C. coronatus*) and *Conus frigidus* (*C. frigidus*) venom collected off the Iranian coast in a mouse behavioral test.

**Methods:** Conotoxin containing fractions were extracted from the venom ducts and initially purified by column chromatography. The analgesic effect of the fractions was determined on formalin pain model and hot-plate test.

**Results:** The results led to the identification of four fractions with analgesic activity in *C. coronatus* and two in *C. frigidus*. Only one fraction was able to reduce the flinching and licking in both acute pain and chronic pain phases of the formalin test. Moreover, the activity of this fraction remained 30 minutes on the hot-plate test. Purification of the fractions was carried out by RP-HPLC. LC-ESI-MS analysis of the fractions showed that the conotoxins of the analgesic fraction had molecular weights not previously reported.

**Conclusion:** The findings give insight into the venom of two previously under-investigated *Conus* species and reveal the therapeutic potential of the containing conopeptides.

*Avicenna J Med Biotech* 2020; 12(3): 179-185

### \* Corresponding author:

Halimeh Rajabi, Ph.D., Abadan University of Medical Sciences, Abadan, Iran

Tel: +98 9166313458

### E-mail:

halimeh.rajabi@gmail.com,

h.rajabi@abadanums.ac.ir

Received: 20 April 2019

Accepted: 30 Dec 2019

**Keywords:** Analgesics, Conotoxin, *Conus frigidus*, Pain, Venoms

### Introduction

Cone snails are a group of marine invertebrates with about 803 poisonous species <sup>1,2</sup> which produce highly toxic venoms for defense and preying. These venoms are mixtures of bioactive peptide compounds with molecular weights of less than 5 *kDa* <sup>3-6</sup> secreted by cells of the venom apparatus which is an appendage of the snail's digestive system <sup>7-9</sup>. In addition, other tissues such as salivary glands contain poisonous compounds that contribute to the venom content <sup>10</sup>. Cone snails often inject small amounts of venoms (about 5  $\mu$ l), which usually consist of a complex combination of conotoxins as a defensive mechanism against hunters. The conotoxins are interesting candidates as drug leads <sup>11,12</sup> involved in analgesic, antiepileptic, epilepsy, cardio and neuroprotective activity and myocardial infarction <sup>4,13-16</sup>. Conotoxins are structurally diverse and clas-

sified according to three schemes: the ER signal sequence similarities of the conotoxin precursors (gene superfamilies), the cysteine patterns of mature conotoxins and their disulfide connections (cysteine frameworks), and finally the specificities to pharmacological targets (pharmacological families).

Currently, 28 super-gene families are described. The pharmacological targets of some conotoxins have been identified <sup>14,17</sup>. Although several hundred conotoxins are reported from *Conus* species, few of them have been characterized for their potential pain-relieving roles. This potential is related to the high potency of conotoxins to specifically block individual types of excitable channels on nerve cells, some of which give rise to pain states <sup>14</sup>. Some of the analgesic conotoxins studied to date are: i)  $\alpha$ -conotoxins; ImI and ImII from

*Conus imperialis* (*C. imperialis*)<sup>18</sup>, ii)  $\mu$ -conotoxins; CnIIIC from *Conus consors* (*C. consors*)<sup>4</sup>, GIIIA from *Conus geographus* (*C. geographus*) and PIIIA from *Conus purpurascens* (*C. purpurascens*)<sup>19</sup>, iii)  $\omega$ -conotoxin; SVIB from *Conus striatus* (*C. striatus*), GVIA from *Conus geographus* (*C. geographus*) and MVIIA from *Conus magus* (*C. magus*). The pain killer "Ziconotide", derived from  $\omega$ -conotoxin MVIIA, was approved in December 2004 by the U.S. Food and Drug Administration<sup>20</sup>. Due to various pharmacological activities and the large structural diversity, conotoxins represent a valuable source for the discovery of novel drug leads<sup>10,21,22</sup>. Here, an attempt was made to explore the therapeutic potential of cone snail venom from the Iranian coast, which remains a largely uninvestigated source for these toxins.

*C. coronatus* and *C. frigidus* are dominant species on Qeshm Island, in the northern part of the Persian Gulf (Figure 1)<sup>23</sup> but to our knowledge, there is no study about analgesic activity of these species. Thus, our goal was to collect the venom of these cone snail species and investigate their chemical and pharmacological properties.

### Materials and Methods

#### Sample collection

Thirty-nine specimens of *C. coronatus* and twenty-five specimens of *C. frigidus* with total length of about  $2.4 \pm 0.2$  and  $5.4 \pm 1.2$  cm, respectively were collected from coastal waters of Zeyton Park in Qeshm Island (Location: N 26055.631; E 056015.209, south of Iran) in September 2016. The specimens were kept alive in salt water and transferred to the biotechnology laboratory of Hormozgan University, Iran. Then, dissection and isolation of the venom duct was performed on sterile conditions. Venom ducts of each species were lyophilized separately and transferred on ice to the biotechnology laboratory of Khorramshahr University of Marine Science and Technology, Iran for further procedures.

#### Conotoxin extraction

Conotoxin extraction was performed by addition of deoxygenated cold aqueous acetonitrile solution (40%) to the venom duct and homogenization (Homogenizer Silent Crusher, Heidolph, Germany) at  $16,000 \times rpm$  for 5 min. Then, the mixture was centrifuged at  $10,000 \times g$  for 20 min and the supernatant containing the conotoxins was lyophilized using freeze dryer (Model Christ, 2 alpha, Germany) for 24 hr at  $-56^\circ C$ <sup>9</sup>. The protein concentration was determined by using the Bovine Serum Albumin (BSA) protein quantification method according to Bradford<sup>24</sup>.

#### Purification

**Gel filtration:** The first separation of the conotoxins was carried out using open gel filtration column chromatography. In order to prepare the column ( $2.5 \times 90$  cm), 10 g of Sephadex G-25 resin was suspended in 50



Figure 1. Sampling area for *C. coronatus* (bottom picture) and *C. frigidus* (upper picture) used in this study.

mM Tris buffer (pH=8.5). The column was equilibrated with 50 mM Tris buffer with pH=8.5. The flowthrough speed was set to 0.3 ml per min. After loading the lyophilized protein to the column, 2 ml of fractions were collected for 10 hr and then lyophilized again<sup>25</sup>.

**RP-HPLC purification:** Reverse-phase HPLC [Pump model; K-100, UV detector model 2550 and manual injector (Knauer, Germany)] was used for further purification of conotoxins. Next, 100  $\mu$ l of the active fraction C2 was injected to a flow rate of 1 ml/min on an analytical C<sub>18</sub> column (Particle size: 5  $\mu$ , pore size: 300 Å, column size: 4.6 $\times$ 250 mm) (Coulter, USA). HPLC begins with 90% H<sub>2</sub>O containing 0.05% TFA with a gradient to 100% acetonitrile containing 0.05% TFA over 90 min. The data was analyzed using ChromGate v 3.3.2<sup>9</sup>.

#### LC-ESI-MS analysis

Samples were analyzed by LC-ESI-MS on a microTOF-Q III mass spectrometer (Bruker) with ESI-source coupled with a HPLC Dionex UltiMate 3000 (Thermo Scientific) using a EC100/2 Nucleoshell RP18 Gravity 2.7  $\mu$ m (Macherey-Nagel, Düren, Germany). MS data were acquired over a range from 100-3000 m/z in positive mode. The column temperature was 25°C and the LC conditions used were as follows; eluent A was water with 0.1% acetic acid, while eluent B was acetonitrile containing 0.1% acetic acid. A gradient of 0-60% of eluent B in 12 min with a flow rate of 0.3 ml/min was used. Analysis of the MS data was performed by Bruker Compass Data Analysis 4.1. Monoisotopic masses were compared with similar monoisotopic masses of the peptide sequences/structures which are recorded in ConoServer database (<http://www.conoserver.org/index.php?page=stats&tab=organisms>). Additionally, detected masses were explored for possible fingerprints using "Search by peptide mass" located in the ConoServer database (<http://www.conoserver.org/index.php?page=fingerprint>)<sup>17</sup>.

#### Analgesic test

Male mice in the weight range of 20-25 g were provided from Ahvaz University of Medical Sciences, and

used further according to the guidelines for the care and maintenance of laboratory animals. Mice were kept in the animal house under specified conditions (light cycle of 12 hr darkness and 12 hr light, temperature of  $23\pm 2^\circ\text{C}$  and humidity of 40-50%) and were fed by a special animal pellet.

**Formalin test:** Lyophilized crude extract and purified fractions were dissolved in deionized water. Intraperitoneal (IP) injection was performed using 100  $\mu\text{l}$  of the crude extract (1 mg/kg dose), purified fractions (0.5 mg/kg dose), normal saline (negative control) and morphine (positive control, 2.5 mg/kg dose) per 10 g mouse weight. Seven mice were used in each experimental group. Each mouse was placed in a box with dimensions of  $30\times 30\times 30\text{ cm}^3$ . After one hour, 10  $\mu\text{l}$  of formalin 2.5% per 10 g mouse weight was subcutaneously injected into the right paw of the mouse. Then, the pain response was assessed for one hour. Number of flinches and licking time were considered as pain response<sup>13,26,27</sup>.

**Hot plate test:** The thermal pain response was assessed 30 min after the injection and at intervals (0, 15, 30, 45, and 60 min), then the latency was assessed, and compared with the base tolerance. Hot plate (RB200, Chengdu Taiment Technology Inc, China) was used to test the thermal pain and the temperature was kept constantly at  $55\pm 1^\circ\text{C}$ . Licking and jumping up were considered as response to the painful stimuli. If the reaction time is shorter, the heat pain is more severe. Seven mice were used in each experimental group. Each mouse was placed on a hot plate and the time response to the painful stimuli was measured. This amount was the baseline latency of animals. The test was performed in the following groups: normal saline (Negative control), fraction C2 (0.05 and 0.1 mg/kg), nicotine (0.005, 0.05 and 0.1 mg/kg). Cut off time was considered to be about 60 s<sup>27,28</sup>.

#### Statistical analysis

Values were expressed as mean $\pm$ SEM of seven animals in each group. All the data were statistically compared with the controls by one-way ANOVA, where  $p < 0.05$  was considered to be statistically significant. Statistical analyses were performed using Graph-Pad Prism software version 6.

## Results

#### Extraction and purification of conotoxins

In total, 3.2 mg of crude extract from *C. coronatus* and 2.6 mg from *C. frigidus* was yielded from the venom ducts. The crude extracts were purified using Sephadex G-25. Next, 85 fractions for *C. coronatus* with seven main peaks (C1-C7) and 61 fractions for *C. frigidus* with five main peaks (F1-F5) were collected over 10 h and their UV absorption was spectrometrically determined (Figure S1 and S2).

Due to the promising analgesic results (4.2 section), fraction C2 of *C. coronatus* was further purified by RP-

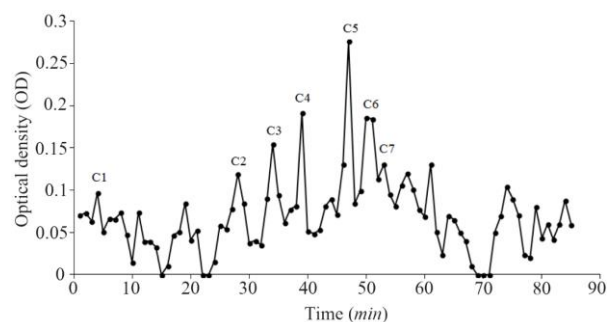


Figure S1. Sephadex G-25 chromatogram of *C. coronatus* extract (220 nm).

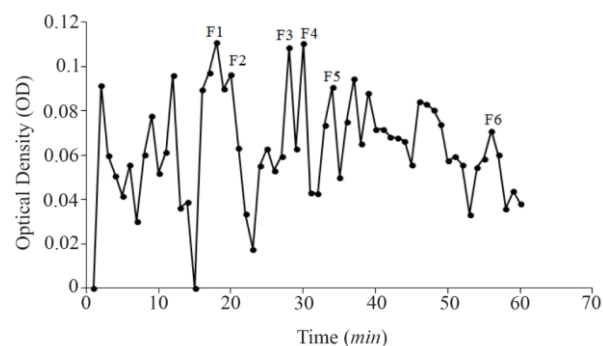


Figure S2. Sephadex G-25 chromatogram of *C. frigidus* extract (220 nm).

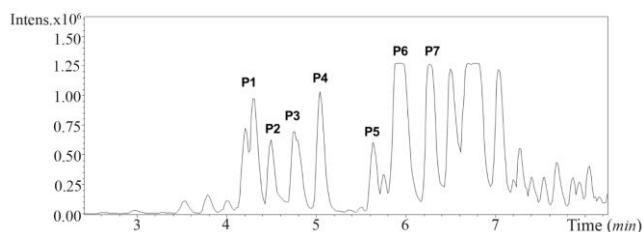


Figure S3. RP-HPLC chromatogram of fraction C2 from *C. coronatus*

HPLC (Figure S3). The collected subfractions of fraction C2 were analyzed using LC-ESI-MS and high molecular weight compounds were detected. The monoisotopic masses of the putative conotoxins are presented in table 1. None of the detected monoisotopic masses had been reported in ConoServer database before.

#### Analgesic test

To explore the analgesic effects of conotoxins in the crude extract, formalin test was used on mice and compared with control groups. Generally, in the first phase (acute phase) of formalin injection, the flinching and licking increased, and then gradually decreased. In the second phase (chronic phase), the flinching and licking increased again, peaking after 35-45 min. Finally, the flinching and licking decreased after 60 min (Figure 2). As shown in figure 2, in mice which were injected with

## Analgesic Study of Cone Snail's Venom

Table 1. Summary of high-molecular weight peaks from *C. coronatus* C2

Peak number	Rt (min)	Detected masses (m/z) and corresponding molecular weight below in bold (Da)			
<b>P1</b>	4,2	739.52		851.51	
		<b>738.51</b>		<b>850.50</b>	
<b>P2</b>	4,4	627.53		765.54	
		<b>626.52</b>		<b>764.53</b>	
<b>P3</b>	4,8	903.54		979.56	1055.58
		<b>902.53</b>		<b>978.55</b>	<b>1054.57</b>
<b>P4</b>	5	1055.58			
<b>P5</b>	5,6	907.58			
		<b>906.57</b>			
<b>P6</b>	5,9	907.58	1360.87 (m/2)	1587.51(m/2)	1814.16 (m/2)
		<b>906.57</b>	<b>2719.74</b>	<b>3173.02</b>	<b>3626.32</b>
			1965.25 (m/3)	2040.81 (m/2)	2116.35 (m/3)
			<b>5772.75</b>	<b>4079.6</b>	<b>6345.9</b>
<b>P7</b>	6,3	959.61			
		<b>958.60</b>			

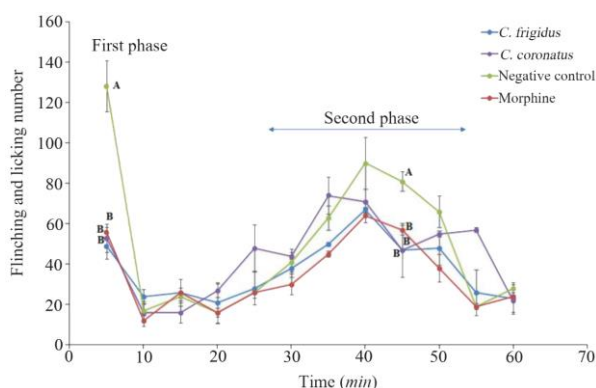


Figure 2. Subcutaneous injection of formalin in mice as a pain model in different mice groups; negative control (Normal saline), *Conus* extracts (1 mg/kg) and morphine as positive control (2.5 mg/kg). Different letters indicate significant differences between groups in the first and second phase of pain ( $p < 0.05$ ). In the second phase of pain (Chronic phase), AUC (Area under curve) was calculated.

*Conus* extracts and morphine, both acute (first) and chronic (second) phases of pain decreased by 2.5 and 1.5 times, respectively ( $p < 0.05$ ) in comparison to the negative control group which was injected with normal saline.

To assess the analgesic effect of the purified fractions, a formalin test with an initial dose of 0.5 mg/kg was performed for seven fractions resulting from the partially purified extract (C1-C7) of *C. coronatus* and six fractions of *C. frigidus* (F1-F6). The results showed that the fractions of C2, C4, C6, C7, F5 and F6 had analgesic effects on the first phase of the formalin test. The fraction number C2 had the most analgesic effect compared to others in the first phase (Figure 3).

Interestingly, only fraction C2 could decrease the second pain phase significantly ( $p < 0.05$ ). All the other

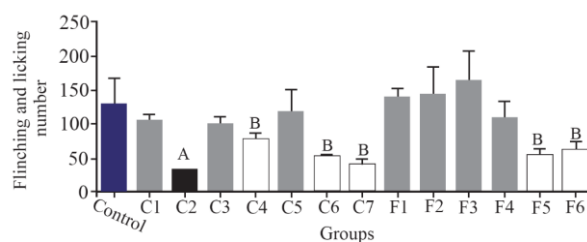


Figure 3. The comparison of number of flinches and licking time among different fractions of *C. coronatus* (C1-C7) and *C. frigidus* (F1-F6) with subcutaneous injection in mice with formalin in the first phase (7 mice were used for each group. Different symptoms indicate significant differences) ( $p < 0.05$ ).

fractions could not substantially decrease the second pain phase of the formalin test and were similar to the control group (Figure 4).

### Thermal pain test of fraction C2

Due to strong analgesic effects of fraction C2 in formalin test and available materials, a thermal pain test was performed on this fraction. Different doses of fraction C2 containing conopeptide (C2-A: 0.1 and C2-B: 0.005 mg/kg) and nicotine (N-A: 0.1, N-B: 0.005 and N-C: 0.0005 mg/kg) were applied. C2-A and N-A had a significant analgesic effect in the interval of 0-60 min. At time 0, the analgesic effect of C2-A was similar to the effect of N-A, and significantly different from the other doses. Also, at 15 and 30 min intervals, the analgesic effects were observed at this dose and until the end of the 30 min duration. The mice which were injected lower dosages of nicotine and C2 (N-B, N-C and C2-B) were similar to the negative control group that was injected with normal saline. Also, the analgesic effect of N-A remained until the end of the 60 min test period (Figure 5).



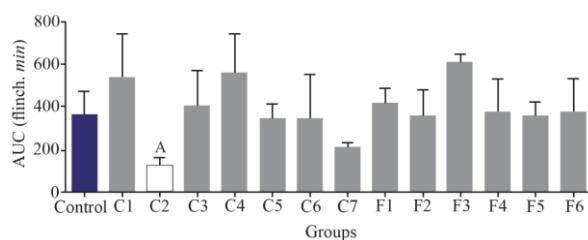


Figure 4. Number of flinches and licking time as AUC is calculated among different fractions for the second phase of formalin test in *C. coronatus* (C1-C7) and *C. frigidus* (F1-F6). Seven mice were used for each group, Different symptoms indicate significant differences ( $p < 0.05$ ).

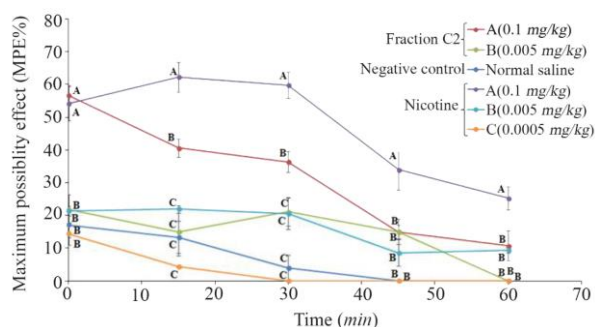


Figure 5. Thermal pain test of fraction C2 (*C. coronatus*) and nicotine (Positive control) with different dosages ( $mg/kg$ ). Seven mice were used for each group and different letters indicate significant difference between groups ( $p < 0.05$ ).

## Discussion

Basic *in vivo* pain research relies on animal experiments and these tests have led to many contributions to the medical progress. Due to the genetic differences in animals, their individual tolerance to pain varies, but the variations are lower than in other behavioral tests. In these experiments, electrical, thermal, mechanical and chemical stimuli are used, and the differences in pain expression are associated with nerve fibers as well as the molecular mechanisms and pharmacological and genetic manipulations<sup>29,30</sup>. In relation to chemical stimulants, different compounds can be used to evaluate the analgesic effects which are measurable by using behavioral scoring<sup>28,31</sup>.

The most common test using chemical stimuli is the formalin test. The benefit of the formalin test compared to other tests is the possibility of reviewing the period and duration of the pain (acute and inflammatory). Formalin primarily causes pain via the TRPA1 receptor which is a member of the TRP family of ion channels<sup>29,32</sup>.

In the present study, the formalin test was used on mice as the behavioral model, and the *Conus* extracts were injected IP. It should be noted that the intracranial and spinal injection represents a more specific binding to their individual receptors<sup>4,15,33</sup>. Pain response to formalin administration was biphasic, as expected (Figure 2). The mechanism of pain induced by formalin

involves a set of central and peripheral factors. The first phase is a rapid response to environmental stimuli and the second phase is a result of inflammatory mediators and functional changes inducing central pain<sup>13,25,26,32</sup>. Administration of both *Conus* crude extracts led to less pain induced by formalin similar to the injection of morphine, which is comparable with the results of other studies on different cone snails<sup>4,34-36</sup>.

According to the pattern of pain in investigated mice, there were slight differences in pain models (in time) which are influenced by genetic factors<sup>37</sup>. Pain includes various stages and certain compounds are involved, including neurotransmitters and enzymes. Some of these compounds result in increased sensitivity and others reduce sensitivity to pain. An increase or decrease in the production of these compounds is influenced by genetics<sup>38</sup>. Moreover, many studies point to analgesic effects of different species of cone snails in different behavioral models. For example, in 2014, Tabaraki *et al* examined the effect of intrathecal injection of different doses of crude extract of *Conus textile* (*C. textile*) on formalin test and found that 10  $ng$  of toxin had similar effects of morphine on pain relief in mice<sup>15</sup>. In another study, Kumar *et al* measured the analgesic activity of *Conus lentiginosus* (*C. lentiginosus*) in a Tail Flick test and showed that the analgesic effect of the semi-purified venom of this species was three times more effective than Paracetamol<sup>16</sup>. Therefore, in the current study, after analyzing the analgesic effects of the crude extract, purification of the extract was performed and the analgesic effects of the resulting fractions were also investigated.

Experiments on the analgesic activity of partially purified extracts of *C. coronatus* (C1-C7) and *C. frigidus* (F1-F6) showed that the fractions number C2, C4, C6, C7, F5 and F6 had an analgesic effect in the first phase (Figure 3) and only fraction number C2 was able to decrease the pain in the second phase, too (Figure 4). After IP injection to mice and formalin test, the  $\mu$ -conotoxin KIIIA showed a significant decrease in licking and flinching of mice during both phases (similar to the fraction C2). This peptide was later found to block sodium channels<sup>30</sup>.

In the hot plate test, analgesic effects of the fraction C2 remained for 30  $min$  (Figure 5). It has been reported that the analgesic effects of *Conus regularis* (*C. regularis*) conotoxin that was injected IP (at dose of 0.85  $mg/kg$ ) was still remaining for about 15  $min$ , which corresponds to an N-type calcium channel blocking conotoxin<sup>25</sup>. Also, the same dose of nicotine had more analgesic effect. Compounds such as nicotine, which are agonists of the cholinergic receptor activities, have anti-inflammatory effects<sup>39</sup>. High doses may cause adverse effects in behavioral models. McIntosh *et al* reported that intracranial injection of 30  $nmol$  mr10a conotoxin in hot plate test causes seizures. However, injection of 2  $nmol$  had analgesic effects of about  $39.5 \pm 13.5$  S<sup>40</sup>.

ESI-MS analysis of the purified fraction C2 showed that seven peaks contained compounds with a molecular weight between 0.5 to 6.4 *kDa*. Other compounds in the fraction were probably secondary compounds that played a role in the maturation of conotoxin, or were small portions of protein precursor before maturity in the venom apparatus<sup>10,41</sup>. Heghinian and Mari<sup>12</sup> reported that purified fractions of cone snail venom can contain several different peptides with different biological activities<sup>6,12</sup>. Based on the molecular weights obtained from LC-HR-ESI-MS analysis, compound of fraction C2 did not show similarity to any conotoxins in ConoServer database (Table 1), so they likely represent novel conotoxin structures that will be further isolated and analyzed in future studies.

### Conclusion

The analgesic effects of *C. coronatus* and *C. frigidus* venom were observed in this study which directed us towards the good potential of therapeutic molecules. In future studies, more information about the conotoxin(s) with analgesic properties, their structure and function as well as their toxicity need to be obtained. Given that *C. coronatus* is one of the dominant species in the Persian Gulf, and is accessible for researchers, this is an attractive source for further research on conotoxins.

### Acknowledgement

Special thanks go to Dr. Pascal Heimer (Institute for Pharmaceutical Biology, University of Bonn, Germany) for assisting in LC-ESI-MS analyses.

### Conflict of Interest

The authors declare no conflict of interest.

### Ethical Approval

The study was ethically approved by the Ethics Committee of Abadan School of Medical Sciences, Ref: IRABADAN.UMS.REC 1395. 175.

### Funding

The authors gratefully acknowledge the help and financial support of Abadan School of Medical Sciences (Grant number: 951062).

### References

- Pillandre N, Bouchet P, Duda TF, Kaufenstein S, Kohn A, Olivera BM, et al. Molecular phylogeny and evolution of the cone snails. *Mol Phylogenet Evol* 2014;78:290-303.
- Pillandre N, Duda TF, Meyer C, Olivera BM, Bouchet P. One, four or 100 genera? A new classification of the cone snails. *J Molluscan Stud* 2015;81(1):1-23.
- Dobson R, Collodor M, Gilles N, Turtoi A, De Pauw E, Quinton L. Secretion and maturation of conotoxins in the venom ducts of *Conus textile*. *Toxicon* 2012;60(8):1370-1379.
- Favreau P, Benoit E, Hocking HG, Carlier L, Hoedt DD, Leipold E, et al. A novel  $\mu$ -conotoxin, CnIIIC, exerts potent and preferential inhibition of NaV 1.2/1.4 channels and blocks neuronal nicotinic acetylcholine receptors. *British J Pharm* 2012;166(5):1654-1668.
- Neves J, Campos A, Osorio H, Antunes A, Vitor V. Conotoxin from Cape Verde *Conus crotchii*. *Mar Drug* 2013; 11(6):2203-2215.
- Rodriguez AM, Dutertre S, Lewis RJ, Mari F. Intraspecific variation in *Conus purpurascens* injected venom using LC/MALDI-TOF-MS and LC-ESI-Triple TOF-MS. *Anal Bioanal Chem* 2015;407(20):6105-6116.
- Marshall J, Kelley WP, Rubakhin SS, Bingham JP, Swedler JV, Gilly WF. Anatomical correlates of venom production in *Conus californicus*. *Biol Bull* 2002;203(1):27-41.
- Page LR. Metamorphic remodeling of a planktrophic larva to produce the predatory feeding system of a cone snail (Mollusca, Neogastropoda). *Biol Bull* 2011;221(2): 176-188.
- Tayo LL, Lu B, Cruz LJ, Yates JR 3rd. Proteomic analysis provides insights on venom processing in *Conus textile*. *J Proteome Res* 2010;9(5):2292-2301.
- Biass D, Violette A, Hulo N, Lisacek F, Favreau P, Stocklin R. Uncovering intense protein diversification in a cone snail venom gland using an integrative venomomics approach. *J Proteome Res* 2015;14(2):628-638.
- Dutertre S, Jin AH, Vetter I, Hamilton B, Sunagar K, Lavergne V, et al. Evolution of separate predation and defence evoked venoms in carnivorous cone snails. *Nat Commun* 2014;5:1-9.
- Heghinian M, Mari F. Discovery and biological characterization of conotoxin from the venom of *Conus brunneus* in *Drosophila melanogaster*. Presented for the Ph.D., Florida Atlantic University. 2014.
- Bernaldez J, López, O, Licea A, Salceda E, Arellano R, O, Vega R, et al. Electrophysiological characterization of a novel small peptide from the venom of *Conus californicus* that targets voltage-gated neuronal Ca<sup>2+</sup> channels. *Toxicon* 2013;57(1):60-67.
- Lewis RJ, Dutertre S, Vetter I, Christie MJ. *Conus* venom peptide pharmacology. *Pharm Rev* 2012;64(2):259-298.
- Tabaraki N, Shahbazzadeh D, Moradi AM, Vosughi G, Mostafavi PG. Analgesic effect of Persian Gulf *Conus textile* venom. *Iran J Basic Med Sci* 2014;17(10):793-797.
- Kumar P, Venkateshvaran K, Srivastava PP, Nayak SK, Shivaprakash SM, Chakraborty, SK. Pharmacological studies on the venom of the marine snail *Conus lentiginosus* Reeve 1844. *Int J Fish Aqua Stud* 2014;1(3):79-85.
- Kaas Q, Yu R, Jin AH, Dutertre S, Craik DJ. Conoserver: updated content, knowledge, and discovery tools in the conotoxin database. *Nucleic Acids Res* 2012;40(Database issue):D325-D330.
- Ellison J, McIntosh M, Olivera BM. Alpha-conotoxin ImI: similar  $\alpha 7$  nicotinic receptor antagonists act at different sites. *J Biol Chem* 2003;278(2):757-764.

19. Jimenez EC, Olivera BM. Divergent M-and O-super-family peptides from venom of fish-hunting *Conus parius*. *Peptides* 2010;31(9):1678-1683.
20. Sarasa A, Mohammadi SA, Christie MJ. Conotoxin Interactions with  $\alpha 9\alpha 10$ -nAChRs: Is the  $\alpha 9\alpha 10$ -nicotinic acetylcholine receptor an important therapeutic target for pain management? *Toxins* 2015;7(10):3916-3932.
21. Moller C, Vanderweit N, Mari F. Comparative analysis of proteases in the injected and dissected venom of cone snail species. *Toxicon* 2013;65:59-67.
22. Violette A, Biass D, Dutertre S, Koua D, Piquemal D, Pierrat F, et al. Large-scale discovery of conotoxins and conoproteins in the injectable venom of a fish-hunting cone snail using a combined proteomic and transcriptomic approach. *J Proteom* 2012;75(17):5215-5225.
23. Khoobdel M, Dehghani H, Tavana AM, Ghasemi M, Dakhteh SM, Hesni MA, Rezaie-Atagholipour M. Faunal data and envenomation emergency first aid of cone snails (*Conus* spp.) in Qeshm Island, the Persian Gulf. *Asian Pac J Trop Med* 2017;10(12):1167-1171.
24. Kruger NJ. The Bradford method for protein quantitation. *Methods Mol Biol* 1994;32:9-15.
25. Green BR, Catlin P, Zhang M, Fiedler B, Bayudan W, Morrison A, et al. Conotoxins containing nonnatural backbone spacers: cladistic-based design, Chemical synthesis, and improved analgesic activity. *J Biol Chem* 2007;14(4):399-407.
26. Han TS, Teichert RW, Olivera BM, Bulaj G. *Conus* Venoms-A rich source of peptide-based therapeutics. *Curr Pharm Des* 2008;14(24):2462-2479.
27. Lee S, Kim Y, Back SK, Choi HW, Lee JY, Jung HH, et al. Analgesic effect of highly reversible  $\omega$ - conotoxin FVIA on N-type  $Ca^{2+}$  channels. *Mol Pain* 2010;6:97-104.
28. Shi G, Liu Y, Lin HM, Yang SL, Feng YL, Reid PF, et al. Involvement of cholinergic system in suppression of formalin-induced inflammatory pain by cobratoxin. *Acta Pharmacol Sin* 2011;32(10):1233-1238.
29. Barrot M. Tests and models of nociception and pain in rodents. *Neuroscience* 2012;211:39-50.
30. Tiwari G, Tiwari R, Sriwastawa B, Bhati L, Pandey S, Pandey P, et al. Drug delivery systems: An updated review. *Int J Pharm Invest* 2012;2(1):2-11.
31. Zhang MM, Green BR, Catlin P, Fiedler B, Azam L, Chadwick A. Structure/function characterization of conotoxin KIIIA, an analgesic, nearly irreversible blocker of mammalian neuronal sodium channels. *J Biol Chem* 2007;282:30699-30706.
32. Gatchel RJ, Peng YB, Peters ML, Funchs PN, Turk DC. The biopsychosocial approach to chronic pain: scientific advances and future directions. *Psychol Bull* 2007;133(4):581-624.
33. Wu X, Shao X, Guo ZY, Chi CW. Identification of neuropeptide Y-like conotoxins from the venom of *Conus betulinus*. *Acta Biochim Biophys Sin* 2010;42(7):502-505.
34. Elliger CA, Richmond TA, Lebaric ZN, Pierce NT, Sweedler JV, Gilly WF. Diversity of conotoxin types from *Conus californicus* reflects a diversity of prey types and a novel evolutionary history. *Toxicon* 2011;57(2):311-322.
35. Olivera BM, Teichert RW. Diversity of the neurotoxic conus peptides. *Mol Intervent* 2007;7(5):251-260.
36. Wen L, Yang SH, Zhou W, Zhang Y, Huang P. New conotoxin so-3 targeting N-Type voltage-sensitive calcium channels. *Mar Drugs* 2006;4(3):215-227.
37. Ochsner KN, Ludlow DH, Knierim K, Hanelin J, Ramachandran T, Glover GC. Neural correlates of individual differences in pain-related fear and anxiety. *Pain* 2006;120(1-2):69-77.
38. Kindler LL, Bennett RM, Jones KD. Central sensitivity syndromes: mounting pathophysiologic evidence to link fibromyalgia with other common chronic pain disorders. *Pain Manag Nurs* 2011;12(1):15-24.
39. Zarrindast MR, Pazouki M, Nassiri-Rad S. Involvement of cholinergic and opioid receptor mechanisms in nicotine-induced antinociception. *Pharm Toxic* 1997;81(5):209-213.
40. McIntosh JM, Corpuz GO, Lauer RT, Garrett JE, Wagstaff JD, Bulaj G, et al. Isolation and characterization of a novel *Conus* peptide with apparent antinociceptive activity. *J Biol Chem* 2000;275(42):32391-32397.
41. Bingham JP, Baker MR, Chun JB. Analysis of a cone snail's killer cocktail-The milked venom of *Conus geographus*. *Toxicon* 2012;60(6):1166-1170.