

## Expression and Purification of Recombinant ROP1 of *Toxoplasma gondii* in Bacteria

Reyhaneh Mohabati<sup>1,2</sup>, Jalal Babaie<sup>1</sup>, Samira Amiri<sup>1</sup>, Mohammad Talebzadeh<sup>1</sup>,  
Pezhman Fard-Esfahani<sup>3</sup>, Mojtaba Darbouy<sup>2</sup>, and Majid Golkar<sup>1\*</sup>

1. Molecular Parasitology Laboratory, Department of Parasitology, Pasteur Institute of Iran, Tehran, Iran

2. Department of Biochemistry, Science and Research Branch, Islamic Azad University, Fars, Iran

3. Department of Biochemistry, Pasteur Institute of Iran, Tehran, Iran

### Abstract

**Background:** Toxoplasmosis is a worldwide-distributed infection which is mostly asymptomatic but can cause serious health problems in congenitally-infected newborns and immunocompromised individuals. Research is undergoing both to improve *Toxoplasma* serological tests, which play the main role in laboratory diagnosis of the infection, and develop an effective vaccine to prevent the infection. Some studies showed usefulness of rhoptry protein 1 (ROP1) antigen of *Toxoplasma gondii* (*T. gondii*) in serodiagnosis of the infection and induction of protective immunity. The purpose of this study was to produce recombinant ROP1 and evaluate its antigenicity against human infected sera.

**Methods:** DNA encoding ROP1, amino acids 171 to 574, was obtained from *T. gondii* RH strain by polymerase chain reaction amplification and cloned in prokaryotic expression plasmid pET-15b. rROP1 was expressed in *Escherichia coli* (*E. coli*) and purified in a single step by immobilized metal ion affinity chromatography.

**Results:** DNA sequencing showed 99% similarity between the cloned sequence and the corresponding sequence in Gene bank. Results indicated the proper antigenicity of rROP1. Sera from *Toxoplasma* infected individuals specifically recognized rROP1 in Western blotting.

**Conclusion:** rROP1 is antigenic toward human infected sera and can be used in studies for development of both a *Toxoplasma* serological test and a protective vaccine.

#### \* Corresponding author:

Majid Golkar, Ph.D.,  
Molecular Parasitology  
Laboratory, Department of  
Parasitology, Pasteur  
Institute of Iran, Tehran, Iran

Tel: +98 21 66968855

Fax: +98 21 66968855

#### E-mail:

majid.golkar@gmail.com

Received: 7 Feb 2013

Accepted: 1 May 2013

*Avicenna J Med Biotech* 2013; 5(4): 227-233

**Keywords:** Gene expression, Purification, ROP1 protein, *Toxoplasma gondii*

### Introduction

*T. gondii* is an obligate intracellular pathogen that can probably infect all warm-blooded animals including humans<sup>1-3</sup>. Primary infection with *T. gondii* acquired during pregnancy can spread to the fetus and results in premature birth, permanent neurological damage and visual impairment. Although toxoplasmo-

sis is generally benign in immunocompetent individuals, it is a significant cause of morbidity and mortality in congenitally-infected infants and immunocompromised individuals such as those infected with human immunodeficiency virus (HIV) or those receiving immunosuppressive therapy<sup>3-5</sup>. Some studies

reported if primary maternal *Toxoplasma* infection is diagnosed promptly, chemotherapy can reduce both transmission of the parasite to offspring and morbidity and mortality associated with the congenital infection<sup>4-6</sup>.

Generally, laboratory diagnosis of *Toxoplasma* infection can be established by isolation of the parasite from blood or body fluids, demonstration of the parasite in tissues, detection of specific nucleic acid sequences with DNA probes, or detection of *T. gondii*-specific immunoglobulins<sup>7</sup>. Diagnosis of toxoplasmosis in immunocompetent individuals e.g. pregnant women is mainly based on serological tests since more than 90% of pregnant women present no specific clinical signs of the infection<sup>8</sup>. On the other hand, definitive diagnosis in immunocompromised individuals is mostly undertaken by direct detection of the parasite by means of PCR, histology, cell culture and mouse inoculation<sup>9</sup>.

Serological tests are primarily based on crude *Toxoplasma* antigens which are quite laborious and expensive to produce. Moreover, the complex nature of crude *Toxoplasma* antigens makes standardization of the assays difficult and frequently gives rise to insufficient specificities for differentiation between acute and chronic infection<sup>10,11</sup>. Recombinant antigens have been considered as an alternative for the development of improved serological tests<sup>7,9,12,13</sup>.

The invasive stages of apicomplexans are characterized by the presence of an apical complex composed of specialized cytoskeletal and secretory organelles, including Rhoptries<sup>14</sup>. Rhoptry proteins have key biological roles in penetration into the host cell, and may facilitate the formation of the Parasitophorous Vacuole (PV) and mediate its clustering with host cell organelles<sup>15</sup>.

The ROP1 gene is a single copy gene with a message of approximately 2.1 *kB* (amino acids 1-667) and shows an unusual charge and amino acid asymmetry<sup>16,17</sup>. Soluble ROP1 is secreted into the PV during entry of *T. gondii* into host cells before its quick disappearance.

This rapid disappearance suggests that ROP1 plays a role in early invasion<sup>18-20</sup>.

Diagnostic performance of ROP1 has been investigated in IgG, IgG avidity and IgM ELISA for detection of *Toxoplasma* infection and distinguishing between acute and chronic infection<sup>5,21,22</sup>. Also, ROP1 has been assessed as a vaccine candidate against *T. gondii* infection in sheep and mice<sup>23,24</sup>.

In this study, our purpose was to evaluate bacterial expression and purification of recombinant ROP1 protein (rROP1). The purified rROP1 presented proper antigenicity and could be used in future studies for exploring its usefulness in developing a recombinant ELISA test and/or effective vaccine against toxoplasmosis.

## Materials and Methods

### Parasitic and bacterial strains

*T. gondii* RH strain was used for extraction of genomic DNA. Tachyzoites were injected into peritoneal cavity of Swiss mice. Three days later, tachyzoites were harvested from peritoneal fluid, washed with Phosphate Buffered Saline (PBS) and stored at -80°C until they were ready for use. *E. coli* Top 10F' (Invitrogen, Carlsbad, CA, USA), *E. coli* BL21 (DE3) PlysS and Rosetta (DE3) (Promega, Madison, WI, USA) were used for cloning and expression of recombinant antigen, respectively.

### Construction of the recombinant expression plasmid pET15-ROP1

DNA sequence of *rop1* was obtained from patent database (accession no. AAq77715.1). Genomic DNA was extracted from tachyzoites of *T. gondii*, RH strain, by a genomic DNA extraction kit (Bioneer, Seoul, South Korea) and used as the template for polymerase chain amplification (PCR) of ROP1 gene fragment, encoding amino acids 171 to 574 (404 aa) using the following primers:

Forward primer: ATTCATATGGCCCTTTC  
GAGCCACAATGG

Reverse primer: ATTCTCGAGCGATCCAT  
CATCCTGCTCTCTCC.

PCR amplification was performed as 1 cycle of 95°C for 5 min then 40 cycles of 95°C for 50 s, 59.8°C (+0.1°C increment per cycle) for 40 s and 72°C for 50 s. The last step was a final primer extension for 30 min at 72°C. The PCR product was ligated into T/A cloning vector, pTZ57R/T (Fermentas, Vilnius, Lithuania). Ligation product was transformed into *E. coli* Top 10F' cells and recombinant clones were selected by blue/white screening, and a recombinant clone harboring ROP1 DNA was recognized by colony-PCR. The ROP1 DNA fragment was cut with *XhoI* and *NdeI* and inserted in-frame into expression vector pET-15b(+) which was previously cut with the same enzymes. The presence of ROP1 insert in the recombinant plasmid was checked by restriction analysis and sequence determination. The recombinant plasmid was named pET15b-ROP1.

#### **Expression of recombinant ROP1 (rROP1)**

*E. coli* Rosetta (DE3) and BL21 (DE3) pLysS bacteria were transformed by pET15-ROP1 and grown in Luria Bertani (LB) broth supplemented with ampicillin (100 µg/ml) and chloramphenicol (34 µg/ml). The culture was grown with vigorous shaking at 37°C to an OD<sub>600</sub> of 0.6-0.8. Protein production was induced by 0.1, 0.5, 1.0, and 1.5 mM isopropyl-β-D-thiogalactoside (IPTG) and bacteria were incubated by vigorous shaking for 4, 5, 6 and 16 hr in order to find the best expression conditions. Induced bacteria were harvested, lysed and expression of rROP1 was analyzed by SDS-polyacrylamide gel-electrophoresis (SDS-PAGE). Expression of rROP1 was estimated by densitometry analysis.

#### **Purification of rROP1**

Bacteria from 500 ml induced culture were resuspended in 20 ml of buffer A (0.5 M NaCl, 30 mM Tris-base, pH=8.5 and 1 mM Phenylmethylsulfonyl Fluoride (PMSF) as a protease inhibitor). Cells were sonicated for 10 min using MSE ultrasonic disintegrator (Fisons, Loughborough, UK) at 60% power and centrifuged at 8500 rpm and 4°C for 20 min. The supernatant was passed through a

0.2 µm (pore size) filter. Five ml of Ni<sup>2+</sup>-nickel Nitrilotriacetic Acid (NTA) resin, previously equilibrated with buffer A, was incubated with the supernatant and stirred gently for 1 hr at room temperature. Then, the resin was washed sequentially with 20 ml of buffers B, C and D (buffer A containing 20, 40, and 80 mM imidazole, respectively). rROP1 was eluted with buffer E (buffer A containing 400 mM imidazole) and dialyzed against PBS overnight at 4 °C.

#### **Electrophoresis and western blot analysis**

Protein samples were analyzed by SDS-PAGE using 12% polyacrylamide gel. Protein bands were transferred onto PVDF membrane. Membrane was blocked with 2% bovine serum albumin in PBS-0.05% Tween 20 and probed with 1:100 diluted pooled human sera representative of acute, chronic and non-infected pregnant women. Bound antibodies were detected using horseradish peroxidase conjugated goat anti-human IgG antibodies diluted 1:7000 (Sigma, Hilden, Germany). Human sera and secondary antibodies were diluted in blocking buffer. Signals were detected using 3, 3'-diaminobenzidine tetrahydrochloride substrate (DAB) (Kementec Diagnostic, Taastrup, Denmark).

## **Results**

#### **Cloning of ROP1 gene fragment**

A 1234 bp gene fragment encoding amino acids 171 to 574 (accession no. AAQ77715.1) of ROP1 was PCR amplified from the genome of *T. gondii* RH tachyzoites and cloned into pTZ57R/T. The recombinant clone was selected by colony PCR and sub-cloned into pET-15b(+) expression vector. Sequence analysis of ROP1 gene fragment demonstrated 99% sequence similarity with the corresponding published sequence of *rop1*. In pET15-ROP1, 22 amino acids including a cluster of 6 histidine residues were fused to the N-terminal of rROP1 to facilitate subsequent purification of the recombinant protein.



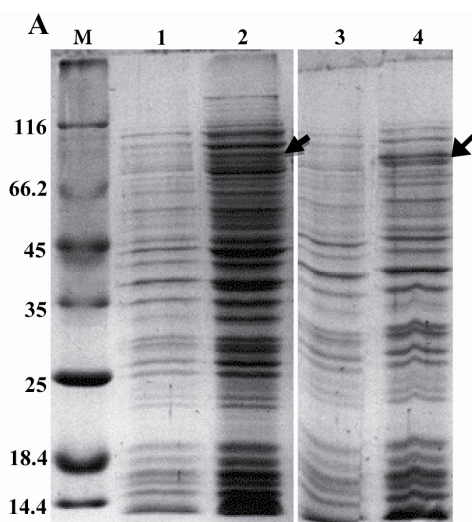


Figure 1A. Expression of rROP1 in two different bacterial expression hosts, *E. coli* BL21 (DE3) pLysS (lanes 1 and 2) and Rosetta (lanes 3 and 4). Induced (lanes 2 and 4) and uninduced bacteria (lanes 1 and 3) were analyzed on SDS-PAGE. Densitometry analysis using Image J software showed rROP1 band attributed to 1.5% and 0.5% of total protein in induced Rosetta (DE3) and BL21 (DE3) pLysS bacteria, respectively

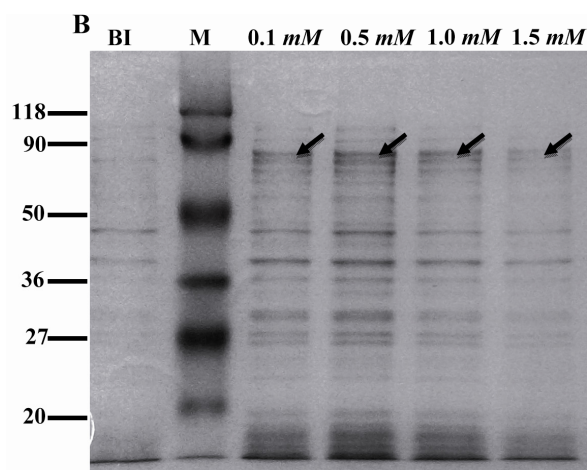


Figure 1B. Expression of rROP1 at different concentrations of IPTG. Rosetta (DE3) bacteria were induced with IPTG at concentrations from 0.1 mM to 1.5 mM. Densitometry analysis of rROP1 protein band showed no difference in protein expression when IPTG increased from 0.1 mM to 1.5 mM. BI: before induction

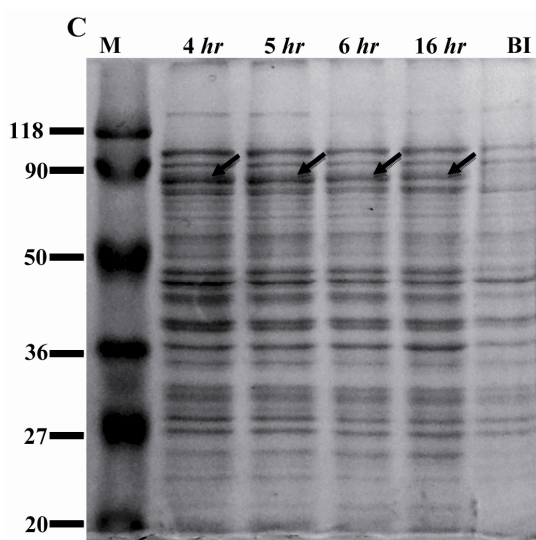


Figure 1C. Expression of rROP1 at different times of induction. Rosetta (DE3) bacteria were induced with 0.1 mM IPTG and incubated for different periods of time. Densitometry analysis of rROP1 protein band showed highest expression of rROP1 and was achieved 4 hr after induction. BI: before induction

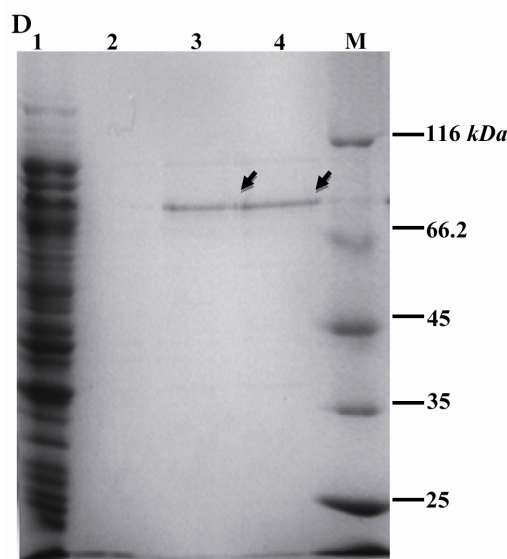


Figure 1D. Purification of rROP1. Soluble recombinant rROP1 protein was purified by Ni+2-NTA affinity chromatography, as illustrated in material and methods section, and analyzed by SDS-PAGE. Lane 1: flow through; lane 2: Wash; lane 3: Elution 1; lane 4: Elution 2

### Expression and purification of rROP1

The recombinant plasmid pET15-ROP1 was transformed into two different strains of *E. coli* i.e. Rosetta (DE3) and BL21 (DE3) pLysS. Expression of rROP1 was induced in

both strains at different concentrations of IPTG. Moreover, a time-course study was performed to find out the optimized time of induction. SDS-PAGE analysis showed the presence of a protein band of about 80 kDa in induced bacteria which was absent in uninduced bacteria (Figure 1A). According to

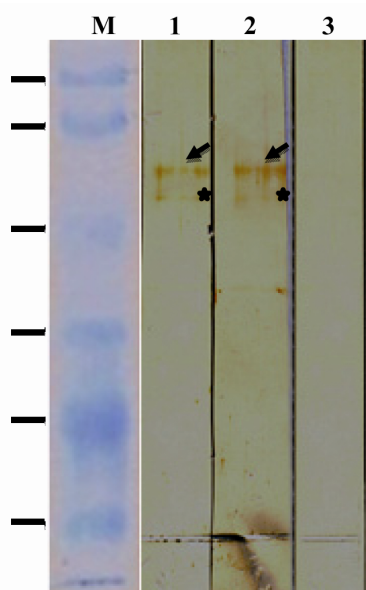


Figure 2. Immunoreactivity of rROP1. Purified rROP1 was analyzed by SDS-PAGE, transferred onto PVDF membrane and probed with pooled sera from pregnant women with acute (lane 1), chronic (lane 2) and no *T. gondii* infection (lane 3).

\*Degraded ROP1 is marked with star

the densitometry analysis, rROP1 comprised 1.5% of total proteins in Rosetta (DE3) bacteria, while the expression level was lower in BL21 (DE3) pLysS bacteria and contributed to 0.5% of the total proteins (Figure 1A). We applied Rosetta (DE3) for further analysis. The expression of rROP1 was approximately the same when IPTG was added to the culture medium at increasing concentration from 0.1 to 1.5 mM (Figure 1B). The time-course study showed that the maximum expression of rROP1 was achieved 4 hr after induction (Figure 1C).

The apparent molecular weight of rROP1, about 80 kDa, was much higher than the molecular mass. It was probably due to the octapeptide repeats in ROP1 sequence which are rich in proline-glutamic acid residues<sup>25</sup>.

Induced bacteria from a 500 ml culture were harvested and lysed by sonication. Soluble proteins were applied to Ni-NTA and rROP1 was purified in a single step. About 1.5 mg of rROP1 was obtained with the purity of 91% measured by Image J software (Figure 1D).

### Immunoreactivity of rROP1 against human sera

To evaluate antigenicity of rROP1, 1 µg of the purified rROP1 was transferred onto a PVDF membrane and probed with pooled human sera representative of acute and chronic *Toxoplasma* infection. The result of immunoblotting showed both acute sera and chronic sera recognized rROP1 with approximately the same intensity (Figure 2).

### Discussion

In this study, we report expression and purification of *T. gondii* rhostry protein 1 (ROP1) in *E. coli* as a soluble protein. Antigenicity of the purified protein was confirmed in immunoblotting using *T. gondii*-positive human sera.

In order to avoid interference of large fusion tags in ELISA and vaccination experiments, a short N-terminal fusion tag was used for production of rROP1. Though the use of *E. coli* Rosetta (DE3) host, which has been genetically engineered to increase expression of proteins with rare codons, increased the expression of rROP1, the protein was still poorly expressed. The concentration of IPTG could influence the expression of recombinant proteins. We found that IPTG concentration higher than 0.1 mM didn't increase the expression of rROP1. Some studies showed the optimized expression of recombinant proteins in flask culture which can be achieved at IPTG concentration as low as 0.1 mM<sup>26</sup>. The highest level of expression of rROP1 was achieved at 4 hr post induction and the protein yield was decreased afterward, possibly due to protein degradation by proteases. The presence of a 6 Histidine tag allowed purification of rROP1 by immobilized metal ion chromatography (IMAC). Single-step purification of rROP1 yielded highly pure protein. Western blot analysis showed specific immunoreactivity of rROP1 in sera from pregnant women with acute *Toxoplasma* infection, as well as women with chronic *Toxoplasma* infection.

Some studies reported higher production

yield of ROP1, compared to the present study. However, they either expressed shorter length of the protein<sup>27</sup> or used large fusion partners<sup>23</sup>. As there are 62 *E. coli* rare codons in ROP1 gene, chemical synthesis of a codon-optimized ROP1 gene might improve the expression level.

ROP1 has been used in IgM ELISA for the detection of acute *Toxoplasma* infection with very promising results<sup>5,22</sup>. In fact, it was used in the development of a recombinant IgM ELISA test kit by Mikrogen Co. Recently, usefulness of ROP1 in avidity ELISA for discriminating acute from chronic infection was studied<sup>21</sup>.

Several studies showed DNA vaccines encoding ROP1 protein induced strong protective immunity in animals<sup>24,28</sup>. To our knowledge, no study used recombinant ROP1 protein in vaccination experiments, probably due to the difficulties in producing large amounts of the protein. Immunization of animals with recombinant ROP1 formulated in T-cell adjuvants or application of prime-boost strategy using a ROP1 DNA vaccine and recombinant ROP1 might improve the protective immunity.

### Conclusion

In conclusion, this study reported production of rROP1 of *Toxoplasma gondii* in *E. coli*. The recombinant protein was highly purified in a single chromatographic step and shown to be immunoreactive toward sera from infected individuals. The purified protein can be used, in combination with other *Toxoplasma* antigens for developing ELISA tests, and in vaccination experiments for development of the protective immunity in animal models.

### Acknowledgement

This work was supported by the research grants No. 461 from Pasteur Institute of Iran and No. 8900846 from Iranian National Science Foundation.

### References

1. Tenter AM, Heckeroth AR, Weiss LM. *Toxoplasma gondii*: from animals to humans. *Int J Parasitol* 2000;30(12-13):1217-1258.
2. Dubey JP. The history of *Toxoplasma gondii*--the first 100 years. *J Eukaryot Microbiol* 2008;55(6):467-475.
3. Weiss LM, Dubey JP. Toxoplasmosis: A history of clinical observations. *Int J Parasitol* 2009;39(8):895-901.
4. Montoya JG, Liesenfeld O. Toxoplasmosis. *Lancet* 2004;363(9425):1965-1976.
5. Aubert D, Maine GT, Villena I, Hunt JC, Howard L, Sheu M, et al. Recombinant antigens to detect *Toxoplasma gondii*-specific immunoglobulin G and immunoglobulin M in human sera by enzyme immunoassay. *J Clin Microbiol* 2000;38(3):1144-50.
6. Jones JL, Kruszon-Moran D, Wilson M, McQuillan G, Navin T, McAuley JB. *Toxoplasma gondii* infection in the United States: seroprevalence and risk factors. *Am J Epidemiol* 2001;154(4):357-365.
7. Remington JS, Thulliez P, Montoya JG. Recent developments for diagnosis of toxoplasmosis. *J Clin Microbiol* 2004;42(3):941-945.
8. Ferrandiz J, Mercier C, Wallon M, Picot S, Cesbron-Delauw MF, Peyron F. Limited value of assays using detection of immunoglobulin G antibodies to the two recombinant dense granule antigens, GRA1 and GRA6 Nt of *Toxoplasma gondii*, for distinguishing between acute and chronic infections in pregnant women. *Clin Diagn Lab Immunol* 2004;11(6):1016-1021.
9. Montoya JG. Laboratory diagnosis of *Toxoplasma gondii* infection and toxoplasmosis. *J Infect Dis* 2002;185(Suppl 1):S73-S82.
10. Liesenfeld O, Press C, Montoya JG, Gill R, Isaac-Renton JL, Hedman K, et al. False-positive results in immunoglobulin M (IgM) toxoplasma antibody tests and importance of confirmatory testing: the Platelia Toxo IgM test. *J Clin Microbiol* 1997;35(1):174-178.
11. Wilson M, Remington JS, Clavet C, Varney G, Press C, Ware D. Evaluation of six commercial kits for detection of human immunoglobulin M antibodies to *Toxoplasma gondii*. The FDA Toxoplasmosis Ad Hoc Working Group. *J Clin Microbiol* 1997;35(12):3112-3115.
12. Gatkowska J, Hiszczynska-Sawicka E, Kur J, Holec L, Dlugonska H. *Toxoplasma gondii*: an evaluation of diagnostic value of recombinant antigens in

- a murine model. *Exp Parasitol* 2006;114(3):220-227.
13. Beghetto E, Spadoni A, Bruno L, Buffolano W, Gargano N. Chimeric antigens of *Toxoplasma gondii*: toward standardization of toxoplasmosis serodiagnosis using recombinant products. *J Clin Microbiol* 2006;44(6):2133-2140.
  14. Dlugonska H. *Toxoplasma* rhoptries: unique secretory organelles and source of promising vaccine proteins for immunoprevention of toxoplasmosis. *J Biomed Biotechnol* 2008;2008:632424.
  15. Sam-Yellowe TY. Rhoptry organelles of the apicomplexa: their role in host cell invasion and intracellular survival. *Parasitol Today* 1996;12(8):308-316.
  16. Ossorio PN, Schwartzman JD, Boothroyd JC. A *Toxoplasma gondii* rhoptry protein associated with host cell penetration has unusual charge asymmetry. *Mol Biochem Parasitol* 1992;50(1):1-15.
  17. Maine GT, Hunt JC, Brojanac S, Sheu MJT, Chovan LE, Tyner JD, et al., inventors; Abbott Laboratories, assignee. Antigen cocktails and uses thereof. United States patent 6329157-A. 2003.
  18. Bradley PJ, Hsieh CL, Boothroyd JC. Unprocessed *Toxoplasma* ROP1 is effectively targeted and secreted into the nascent parasitophorous vacuole. *Mol Biochem Parasitol* 2002;125(1-2):189-193.
  19. Reichmann G, Dlugonska H, Fischer HG. Characterization of TgROP9 (p36), a novel rhoptry protein of *Toxoplasma gondii* tachyzoites identified by T cell clone. *Mol Biochem Parasitol* 2002;119(1):43-54.
  20. Saffer LD, Mercereau-Puijalon O, Dubremetz JF, Schwartzman JD. Localization of a *Toxoplasma gondii* rhoptry protein by immunoelectron microscopy during and after host cell penetration. *J Protozool* 1992;39(4):526-530.
  21. Holec-Gasior L, Drapala D, Lautenbach D, Kuri J. *Toxoplasma gondii*: usefulness of ROP1 recombinant antigen in an immunoglobulin G avidity assay for diagnosis of acute toxoplasmosis in humans. *Pol J Microbiol* 2010;59(4):307-310.
  22. Pfrepper KI, Enders G, Gohl M, Krczal D, Hlobil H, Wassenberg D, et al. Seroreactivity to and avidity for recombinant antigens in toxoplasmosis. *Clin Diagn Lab Immunol* 2005;12(8):977-982.
  23. Wang Q, Jiang W, Chen YJ, Liu CY, Shi JL, Li XT. Prevalence of *Toxoplasma gondii* antibodies, circulating antigens and DNA in stray cats in Shanghai, China. *Parasit Vectors* 2012;5:190.
  24. Li B, Oledzka G, McFarlane RG, Spellerberg MB, Smith SM, Gelder FB, et al. Immunological response of sheep to injections of plasmids encoding *Toxoplasma gondii* SAG1 and ROP1 genes. *Parasite Immunol* 2010;32(9-10):671-683.
  25. Soldati D, Lassen A, Dubremetz JF, Boothroyd JC. Processing of *Toxoplasma* ROP1 protein in nascent rhoptries. *Mol Biochem Parasitol* 1998;96(1-2):37-48.
  26. Yildir C, Oensan Z, Kirdar B. Optimization of starting time and period of induction and inducer concentration in the production of the restriction enzyme EcoRI from recombinant *Escherichia coli* 294. *Turk J Chem* 1998;22(3):221-226.
  27. Holec-Gasior L, Kur J, Hiszczynska-Sawiicka E. GRA2 and ROP1 recombinant antigens as potential markers for detection of *Toxoplasma gondii*-specific immunoglobulin G in humans with acute toxoplasmosis. *Clin Vaccine Immunol* 2009;16(4):510-514.
  28. Chen G, Guo H, Lu F, Zheng H. Construction of a recombinant plasmid harbouring the rhoptry protein 1 gene of *Toxoplasma gondii* and preliminary observations on DNA immunity. *Chin Med J (Engl)* 2001;114(8):837-840.