

Comparison of Proliferative and Multilineage Differentiation Potential of Sheep Mesenchymal Stem Cells Derived from Bone Marrow, Liver, and Adipose Tissue

Banafsheh Heidari ¹, Abolfazl Shirazi ^{1,2*}, Mohammad Mehdi Akhondi ¹, Hossein Hassanpour ², Bahareh Behzadi ¹, Mohammad Mehdi Naderi ¹, Ali Sarvari ¹, and Sara Borjian ¹

1. Reproductive Biotechnology Research Center, Avicenna Research Institute, ACECR, Tehran, Iran

2. Department of Gametes and Cloning, Research Institute of Animal Embryo Technology, Shahrekord University, Shahrekord, Iran

Abstract

Background: Despite major progress in our general knowledge related to the application of adult stem cells, finding alternative sources for bone marrow Mesenchymal Stem Cells (MSCs) has remained to be challenged. In this study successful isolation, multilineage differentiation, and proliferation potentials of sheep MSCs derived from bone marrow, adipose tissue, and liver were widely investigated.

Methods: The primary cell cultures were prepared from tissue samples obtained from sheep 30-35 day fetus. Passage-3 cells were plated either at varying cell densities or different serum concentrations for a week. The Population Doubling Time (PDT), growth curves, and Colony Forming Unit (CFU) of MSCs was determined. The stemness and trilineage differentiation potential of MSCs were analyzed by using molecular and cytochemical staining approaches. The data was analyzed through one way ANOVA using SigmaStat (ver. 2).

Results: The highest PDT and lowest CFU were observed in adipose tissue group compared with other groups ($p < 0.001$). Comparing different serum concentrations (5, 10, 15, and 20%), irrespective of cell sources, the highest proliferation rate was achieved in the presence of 20% serum ($p < 0.001$). Additionally, there was an inverse relation between cell seeding density at culture initiation and proliferation rate, except for L-MSC at 300 cell seeding density.

Conclusion: All three sources of fetal sheep MSCs had the identical trilineage differentiation potential. The proliferative capacity of liver and bone marrow derived MSCs were similar at different cell seeding densities except for the higher fold increase in B-MSCs at 2700 *cells/cm²* density. Moreover, the adipose tissue derived MSCs had the lowest proliferative indices.

Avicenna J Med Biotech 2013; 5(2): 104-117

Keywords: Liver, Mesenchymal stromal cells, Sheep

* **Corresponding author:**
Abolfazl Shirazi, D.V.M.,
Ph.D., Reproductive Biotechnology Research Center,
Avicenna Research Institute,
ACECR, Tehran, Iran
Tel: +98 21 22432020
Fax: +98 21 22432021
E-mail:
shiraziabbas@yahoo.com;
a.shirazi@avicenna.ac.ir
Received: 10 Sept 2012
Accepted: 10 Dec 2012

Introduction

Mesenchymal Stem cells (MSCs) are more homogenous sub-population of mononuclear cells and comprise a rare population of multi-

potent progenitors. These cells are capable of both supporting haematopoiesis and differentiating into different tissues originating from

mesoderm ranging from bone and cartilage to cardiac muscle^{1,2}.

The main factors required for a cell to be regarded as a mesenchymal stem cell are their adhesion potential in monolayer culture during *in vitro* conditions, maintain their undifferentiating characteristics during extended passaging, and differentiation potential into chondrocytes, osteocytes and adipocytes *in vitro*³⁻⁵.

These adult stem cells are attractive candidates for cell-based therapeutic strategies, substantially because of their easy isolation, purification and amplification, as well as their intrinsic ability to self bio-preserved with minimal loss of potency, their multipotential differentiation, and their amenable to genetic manipulation without adverse reactions to allogeneic versus autologous MSCs transplants^{5,6}.

MSCs have been identified and isolated from large variety of tissues such as human amniotic fluid⁷, placenta⁷, Umbilical Cord Blood (UCB)^{8,9}, veins¹⁰, peripheral blood¹¹, muscle¹² pancreas, skin, neuronal system¹³, dental tissue¹⁴ as well as several fetal tissues including bone marrow¹⁵, blood¹⁵, liver¹⁵, lung, spleen¹⁶, and synovium¹⁷.

In the ensuing decades, extensive research has gone into unlocking the therapeutic potential for MSCs. Bone marrow stroma is the most common sources of these cells for clinical use and designated as the gold standard^{7,18}. This source of MSCs was first identified in 1960s by Ernest A McCulloch and James E¹⁹. Further experiments in the 1970s and 80s by Friedenstein *et al* expanded upon the potential of MSCs by demonstrating their capacity for self-renewal and multilineage differentiation^{20,21}.

Although bone marrow provides a universal source of MSCs, but due to certain shortcomings of obtaining the MSCs including pain, morbidity, low cell number upon harvest, high degree of viral contamination and decrease in the proliferative/differentiation capacity along with age, alternate sources for

MSCs have been sought and subjected to intensive investigation^{14,21}.

Among different sources of MSCs, adipose tissue, like bone marrow, is derived from the embryonic mesenchyme and possesses abundant and easily accessible MSCs with less invasive method²² besides its easily growth under standard tissue culture conditions²³.

Recent advances in cosmetic surgery add to its advantage with huge amount of available fatty tissue. Moreover, it has a further advantage when the morbidity associated with large volume bone marrow harvests is taken into the consideration. Its multilineage differentiation has been first identified by Zuk *et al*²².

One alternative source is liver tissue. Different types of fetal liver (stem) cells during development were identified, and their advantageous growth potential and bipotential differentiation capacity towards liver or biliary cells has been shown²⁴⁻²⁶. Moreover, there are evidences indicating the higher proliferative capacity and immunosuppressive effect of fetal MSCs compared to the adult MSCs²⁷. In this context there has been an increasing interest in recent years in development of cell based therapeutic strategies as a novel approach in tissue engineering for the treatment of liver diseases²⁶. In addition, MSCs appear to share similar characteristics across species, which has facilitated the application of MSC in translational studies using animal models. The aim of the present study was to compare growth characteristics and multilineage differentiation potential of sheep foetal MSCs derived from bone marrow (B-MSCs), liver (L-MSCs) and adipose tissues (A-MSCs).

Materials and Methods

Except where otherwise indicated, all chemicals were obtained from the Sigma (St. Louis, MO, USA). Ovine 30-35 day fetus was obtained from the slaughterhouse and transported to the laboratory in Dulbecco's PBS (DPBS) with penicillin/streptomycin on the ice.

Bone marrow cell culture

Bone marrow was collected by flushing femurs and tibias with DMEM (Dulbecco's modified Eagle's medium) diluted with Phosphate Buffer Solution (PBS 1:2) and supplemented with 100 IU/ml penicillin, 100 IU/ml streptomycin. Mononuclear cells fraction were harvested by Ficoll separation of marrow cells (20 min, 600 g). After separation of cloudy corona and dilution with PBS, it was centrifuged in 200 g for 10 min and washed three times in 4-5 ml PBS. The cells were then incubated in complete medium composed of DMEM, 10% FCS, NEaa, NaHCO₃ (3.7 mg/ml), L-glutamin and penicillin/streptomycin at a cell density of 5×10⁶ cells/mL in 5% CO₂ and 37°C. The adherent elongated cells, MSCs, were exhibited homogeneous fibroblast-like morphology with a spindle or triangular-shaped cell bodies, large and ellipse nuclei and growing outward in a "swirling fibroblast-like" pattern. The nonadherent cells were removed after 48 hr with medium change. After 3-4 days the cultures at 80-90% confluency were trypsinized using 0.05% trypsin/1 mM EDTA and then passaged at 1:2 ratios into fresh 25 cm² culture flasks. Subculture was repeated till passage 3 when sufficient cells were provided for the next stage of experiment.

Adipose tissue cell culture

The adipose tissue from lumbar paravertebral regions were separated and collected in 15 ml sterile tubes containing PBS supplemented with BSA (20 mg), 100 IU/ml penicillin (Sigma, USA) and 100 IU/ml streptomycin (Sigma, USA). After washing 2 times with PBS, under laminar hood, the specimen was minced into small pieces and separate fibrous tissue.

The specimen subjected to enzymatic digestion using collagenase type IV (0.6 mg) at 37°C for 120 min. At the end of this time, the floating cells were separated from the vascular stromal fraction by centrifugation in 200 g for 10 min. The pellet (stromal vascular fraction) washed 2 times and filtered through a 150 μm nylon mesh to remove undigested tis-

sue. Mononuclear cells were harvested by Ficoll separation to obtain the mononuclear fraction of marrow cells.

After separation of cloudy corona and dilution with PBS, centrifuged in 200 g for 10 min and washed three times in 4-5 ml PBS. The cells were suspended in proliferation medium including DMEM (Dulbecco Modified Eagle Medium, Sigma, USA) containing 10% FCS (fetal bovine serum, Gibco, Germany), NEaa, NaHCO₃ (3.7 mg/ml), L-glutamin and penicillin/streptomycin (100 U/mL and 100 mg/mL, respectively) (Sigma, USA) and plated at 10⁶ cells/ml in 25 cm²-culture flasks. The cultures were incubated in an atmosphere of 5% CO₂ and 37°C. Meanwhile 45-48 hr after culture initiation, the medium was discarded and the cells were washed with PBS and fed with fresh medium. Medium changes were performed each 3 days until the culture became confluent. At this time, the cultures were trypsinized using 0.05% trypsin/1 mM EDTA and passaged at 1:2 ratios into fresh 25 cm² culture flasks. Subculture was repeated till passage 3 when sufficient cells were provided for the next stage of experiment.

Liver cell culture

The liver from the fetus was dissected with great care without any rush and placed in 15 ml sterile tube containing Hank's balanced salt solution without calcium and magnesium supplemented with 100 IU/ml penicillin and 100 IU/ml streptomycin with pH adjusted to 7.3 and washed 2 times with PBS. Under laminar flow hood, the specimen was mechanically minced into small pieces and then subjected to enzymatic digestion using collagenase IV (0.6 mg/ml) at 37°C for 75 min. At the end of this period, the floating cells were separated by centrifugation at 200 g for 10 min. The pellet was then washed 2 times with PBS and filtered through a 150 μm nylon mesh to remove undigested tissue.

Mononuclear cells fraction were harvested by Ficoll separation (20 min, 600 g). After separation of cloudy corona and dilution with PBS, it was centrifuged in 200 g for 10 min in 4-5 ml PBS (three times). The cells were then

suspended in proliferation medium including DMEM containing 10% FCS, NAaa, NaHCO₃ (3.7 mg/ml), L-glutamin and penicillin/streptomycin and plated at 10⁶ cells/ml in 25 cm²-culture flasks. The flasks were then incubated in an atmosphere of 5% CO₂ and 37°C. After 45-48 hr of culture, the medium was removed and the cells were washed with PBS and refreshed with fresh medium. Medium refreshment was performed after 3 days until the cells became confluent. At this time, the cultures were trypsinized using 0.05% trypsin/1 mM EDTA and passaged at 1:2 ratios into fresh 25 cm² culture flasks. Subcultures were repeated till passage 3 when sufficient cells were provided for the next stage of the experiment.

Verification of MSCs

In addition to identification of MSCs based on their morphologic or phenotypic characteristics, their multilineage differentiation capacity into the bone, fat, and cartilage were evaluated. Moreover, the stemness property of MSCs and the expression of one related gene to each cell lineage were confirmed by molecular approach.

Osteogenic potential

Osteogenesis of MSCs was induced *in vitro* by treating a monolayer culture with a pro-osteogenic cocktail. In brief, MSCs in passage 3-4 were cultured at 3×10⁴ cells in 6 well plates containing proliferation medium and allowed to attain 70-80% confluency. The medium was then replaced by differentiating medium composed of DMEM medium supplemented with 10% FCS, 50 µg/ml ascorbic 2-phosphate (Sigma, USA), 10 nM dexamethasone and 10 mM β glycerol phosphate. The cells were kept in differentiating medium for 28 days with medium changes of twice weekly. At the end of this period, the number and size of mineralizing nodules were maximized. For evaluation of mineralized matrix, cells were stained with 2% Alizarin-red S solution. Briefly, the differentiated cells were washed twice with PBS and fixed with 10% formalin for 10 min at room temperature. The cells

were then washed thoroughly with PBS and stained with 2% Alizarin Red S solution, pH=4-4.1, with 0.5% NH₄OH for 2-5 min. The mineralized matrix was identified by the presence of red foci in stained specimen.

Adipogenic potential

To promote adipogenic differentiation, MSCs at passage 4 were plated in a concentration of 3×10⁴/ml in 6 well culture plates until 70-80% confluency. The proliferation medium was replaced with adipogenic differentiating medium consisted of DMEM supplemented with 10% FCS, 50 µg/ml ascorbic 2-phosphate, 100 nM dexamethasone and 50 µg/ml indomethacine. The cultures were kept for 21 days during which the medium was changed twice weekly. The first sign of the adipocyte differentiation became evident 2-3 weeks after culture when lipid droplet appeared in the differentiating cells. Eventually, the lipid-rich vacuoles within cells were combined together and filled the cells. Accumulation of lipid in these vacuoles was assayed histologically by oil red O staining. Briefly, the intracellular accumulation of lipid-rich vacuoles was stained with 0.3% Oil Red O solution. To this end, the cells were fixed in 10% formalin for 10 min, washed with PBS and stained with 0.3% oil red O solution for 10 min at room temperature. The intracellular lipid-rich vacuoles were stained as red foci.

Chondrogenic potential

Chondrogenesis of MSCs *in vitro* mimics that of cartilage development *in vivo*. To induce chondrogenic differentiation, the passage 4 MSCs at a concentration of 3×10⁴ cells/ml were plated in 6 well culture plates until 70-80% confluency. The proliferation medium was replaced with chondrogenic medium consisted of high-glucose DMEM supplemented with 0.1 µM dexamethasone, 10 ng/mL TGF-β1, 50 µg/ml Ascorbic acid and 50 mg/mL ITS⁺ premix (Becton Dickinson), 6.25 µg/mL insulin, 6.25 µg/mL transferrin, 6.25 ng/mL selenius acid, 10% FCS at 37°C for 3 weeks. Medium changes were carried out twice weekly and chondrogenesis

was assessed at weekly intervals. For the presence of glycosaminoglycans within the extracellular matrix the cells were stained with toluidine blue. Briefly, the differentiated cells were fixed with 10% formalin for 10 min at room temperature.

After washing, the cells were exposed to Toluidine blue for 30 s at room temperature. Acid mucopolysaccharides and sulfated mucopolysaccharides within the extracellular matrix were stained as violet foci.

Molecular verification of MSCs

The RT-PCR analysis was performed to assess an expression of osteocyte, adipocyte, and chondrocyte related genes in differentiated cell lineages (one gene for each cell lineages) as well as two genes related to the stemness status of MSCs. Total RNA was extracted using RNA Extraction Kit (Rima zol; CinnaGen, Tehran, Iran) according to the manufacturer’s instructions.

Before RT, the extracted RNA samples were treated by RNase-free DNaseI (EN0521; Fermentas, Opelstrasse 9, Germany) to ensure that the extracted RNA for synthesis of cDNA is free of DNA contamination. The extracted

RNA was reverse-transcribed to cDNA using 1 mg of extracted RNA, random hexamer primers for ovine genes, and M-MuLV Reverse Transcriptase RNase H- (Vivantis Technologies Sdn. Bhd. Selangor D.E. Malaysia). The PCR reactions were performed using an Eppendorf Mastercycler using primer sequences listed in table 1. The GAPDH was considered as a housekeeping gene. PCR products were analysed in 1% agarose gel, stained with ethidium bromide and visualized by Uvitec gel documentation system.

Growth characteristics

Colonogenic assays (Colony Forming Unit: CFU): To assess the capacity and efficiency for self renewal, passaged-3 MSCs obtained from bone marrow, adipose, and liver tissues were trypsinized and counted using hemacytometere, plated at 100 cells in 10 cm petri dish and allowed to grow for 9 days. At the end of this period, the plates were stained with 1% crystal violet in 100% methanol for visualizing new fibroblast shape colonies (more than 20 cells) produced at cultures. The petri dishes were then observed with a light microscope to determine the number of pro-

Table 1. Details of primers used for RT-PCR

Gane	Sequence (sense/antisense)	Annealing temperature (°C)×cycle no.	Fragment size (bp)	Accession no.
O.PPARa	F:5'-AGAACAAGGAAGCGGAAGTC-3' R:5'-ATCCCGTCTTTGTTTCATCAC-3'	58×28	199	FJ200440
O.Collagen1	F:5'-CCCAGAACATCACCTACCAC-3' R:5'-GGAGGGAGTTTACAGGAAGC-3'	55×38	317	FJ200442
O.Aggecan	F:5'-TTGGACTTTGGCAGAATACC-3' R:5'-CTTCCACCAATGTCGTATCC-3'	55×40	196	FJ200438
O.Oct4	F:5'-CAATTTGCCAAGCTCCTAAA-3' R:5'-TTGCCTCTCACTTGGTTCTC-3'	50×40	290	AY490804
O.Sox2	F:5'-TGATACGGTAGGAGCTTTGC-3' R:5'-GGTCTCTAAAGGGGCAAAAG-3'	50×41	362	X96997
O.GAPDH	F:5'-TGGCAAAGTGGACATCGTTG-3' R:5'-GCGTGGACAGTGGTCATAAGTC-3'	50×38	467	NM-001190390-1



duced colonies. Calculation of the CFU-F efficiency was performed according to the following formula: $\text{CFU-F efficiency} = (\text{counted CFU-F} / \text{cells originally seeded}) \times 100$. Routinely, five CFU-F assays were performed for each isolated cell population.

Population doubling time (PDT)

The passage-3 MSCs at a concentration of 10^4 cells/cm^2 were plated in 25 cm^2 culture flasks and then cultured until 100% confluency. At this time, the cells were trypsinized and counted with hemocytometer. The PDT was calculated for either studied MSCs according to the following equation: $\text{PDT} = \text{culture time (CT)} / \text{population doubling number (PDN)}$. To determine PDN, the formulae $\text{PDN} = \log N_i / N_f \times 3.31$ was used¹⁷. In this equation N_i and N_f were the numbers of initiating and harvesting cells, respectively. Routinely, population doubling time assays were performed in triplet for each type of MSCs.

In the following equation; t = culture time, N_h and N_i are the numbers of harvesting and initiating cells, respectively. $\text{PDT} = (\log 2 \times t) / (\log N_h - \log N_i)$.

Cell seeding density

The MSCs (passage-3) cells were plated at densities of 100, 300, 900, 2700, and 8100 cells/cm^2 in 6-well culture plates and cultured in DMEM supplemented with 10% FBS, 100 IU/ml penicillin and 100 mg/ml streptomycin. Five days after culture, the cells were trypsinized, lifted and counted with hemocytometer. Fold increase were then calculated for each cell density.

Serum concentration

MSCs expansion is strongly dependent on FBS presence in medium. To determine optimal serum concentration, passaged 3 cells were plated at density of $16 \times 10^3 \text{ cells/cm}^2$ in 24-well culture plates with the DMEM medium supplemented with FBS concentrations of 5%, 10%, 15% and 20%. When one of the wells in each group reaches confluent (7 day), all cells were trypsinized and counted with hemocytometer. Fold increase in cell number was determined for each culture group and in

this regard, the FBS concentrations were statistically compared.

Growth curve

The cultured cells are usually grown with characteristic pattern in which three phases including lag, log and plateau phase can be recognized. In the present investigation, growth curve was plotted for each MSCs derived from bone marrow, adipose tissue, and liver in order to better compare growth kinetics of the cells. For this purpose, the passaged-3 cells derived from each tissue were plated at $3 \times 10^4 \text{ cells/well}$ in 24-well culture plates and allowed to become confluent. In a regular daily basis, some wells were trypsinized and the cell number was determined by hemocytometer count. Using the data growth curves was plotted.

Results

MSCs growth characteristics

MSCs were successfully isolated and expanded *in vitro* from all 3 sources. In primary cultures, the cells grew rapidly as such the media change for removal of nonadherent cells was carried out 48 hr of culture and 100% confluency was achieved on day 4 in liver and bone marrow MSCs and day 5 of the culture in A-MSCs (Figure 1). The MSCs were kept their phenotypically homogeneous morphologies as well as their multiplication characteristics in cultures in different sequential passages.

Assessment of PDT in both MSCs lines was revealed no difference in PDT between two sources of MSCs when the cells plated at 10^4 cells/cm^2 in a culture medium supplemented with 10% FBS (Table 2).

Concerning the colonogenic capacity of MSCs, no difference was observed in the number of fibroblast shape colonies (each more than 20 cells) following 100 cells seeding in 10 cm petri dish after 9 days between bone marrow and liver derived MSCs (Table 2, Figure 2).

In MSCs lines, (liver and adipose tissue), the maximum proliferation of the cells (fold increase) was achieved when cell seeding was

Comparison of Proliferative and Multilineage Differentiation Potential of Sheep MSC

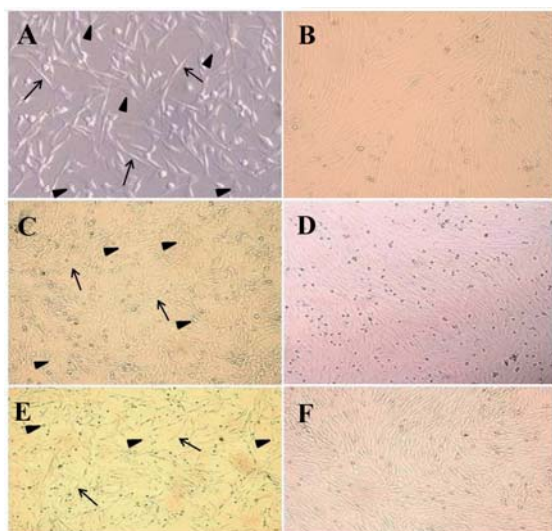


Figure 1. Primary culture of sheep mesenchymal stem cells. At primary culture (48 hr after culture initiation) adherent spindle-shaped cells showed a varying cellular morphology from spindle-shaped (arrow) towards more cuboidal fibroblast-like cells (arrowhead) in adipose tissue, A) (400×), liver; C) (200×), and bone marrow; E) (200×) derived MSCs. Elongated fusiform cells were mostly observed after day 5 of the culture in adipose tissue; B) and after day 4 in liver; D) and bone marrow; F) derived MSCs (200×)

Table 2. Colony numbers and population doubling time in mesenchymal stem cells derived from different sources

MSC	PDT (h)	Colony (N)
Bone marrow	31.3±2.4 ^a	130.0±6.8 ^a
Adipose tissue	70.7±1.3 ^b	93.4±15.4 ^b
Liver	28.0±2.0 ^a	133.0±6.8 ^a

a, b) numbers with different superscript in the same column differ significantly $p < 0.001$

adjusted to 300 cells/cm^2 in the presence of 10% FBS ($p < 0.001$). Indeed, as the cell seeding density was increased the fold increase was decreased except for the 300 cells/cm^2



Figure 2. Efficiency of self renewal of MSCs assessed by rate of colony formation in CFU-F assays. Crystal violet staining for examination of CFU after 21 days showed no difference in the number of fibroblast shape colonies (each more than 20 cells) between bone marrow and liver derived MSCs (100×)

(Table 3). There was no significant difference in fold increase in different cell seeding densities between bone marrow and liver derived MSCs except for the 2700 cells/cm^2 , in which the fold increase in bone marrow derived MSCs was higher than liver MSCs ($p < 0.01$).

The cells having been plated with 20% FBS had a significantly larger fold increase in cell number as compared with lower concentrations of serum (Table 4). According to the plotted curve, the cells in different sources started proliferating immediately after being plated. The culture reached plateau in approximately 5-9 days after initiation depending on the cell sources (Figure 3).

Multilineage cell differentiation

In osteogenic media, the morphology of MSCs derived from three sources was

Table 3. The effect of serum concentration on proliferation of mesenchymal stem cells derived from different sources

MSC	Fold increase			
	Serum 5%	Serum 10%	Serum 15%	Serum 20%
Bone marrow	6.2±0.4 ^{a,A}	14.3±0.7 ^{b,A}	25.1±1.8 ^{c,A}	31.2±1.3 ^{d,A}
Liver	5.8±0.3 ^{a,A}	9.70±1.0 ^{b,B}	13.3±1.0 ^{c,B}	18.9±1.1 ^{d,B}
Adipose tissue	3.1±0.1 ^{a,B}	4.50±0.2 ^{b,C}	5.50±0.3 ^{b,C}	8.10±0.6 ^{c,C}

a-d) Numbers with different lowercase superscript letters in the same row differ significantly ($p < 0.001$)

A-C) Numbers with different uppercase superscript letters in the same column differ significantly ($p < 0.001$)

Table 4. The effect of cell seeding density on proliferation of mesenchymal stem cells derived from different sources

MSC	Fold increase				
	Cell density (n/cm ²)				
	100	300	900	2700	8100
Bone marrow	125.0±1.5 ^{a,A}	150.7±22.3 ^{a,A}	73.1±20 ^{b,A}	40.4±4.6 ^{b,c,A}	13.8±1.7 ^{c,A}
Liver	110.7±5.8 ^{a,A}	150.9±13 ^{b,A}	80.8±5.4 ^{c,A}	30.0±1.6 ^{d,B}	12.3±0.6 ^{d,A}
Adipose tissue	49.80±5.1 ^{a,B}	22.80±2 ^{b,B}	10.0±1.4 ^{c,B}	4.10±0.4 ^{c,C}	2.60±0.4 ^{c,B}

a, d) numbers with different lowercase superscript letters in the same row differ significantly ($p < 0.001$)
A,C) numbers with different uppercase superscript letters in the same column differ significantly ($p < 0.01$)

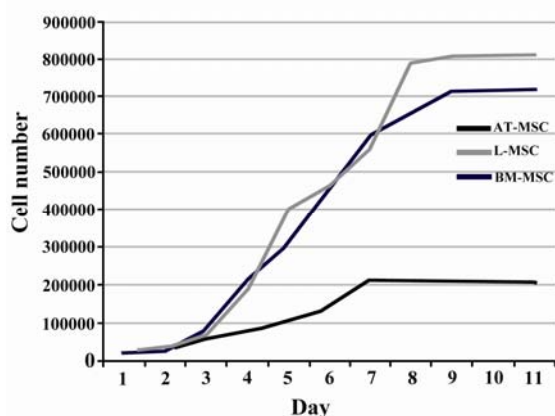


Figure 3. Growth curve of MSCs. The cells of different sources started proliferation immediately after being plated and reached plateau in approximately 5-9 days after culture initiation depending on the cell sources

changed from spindle-shaped to cubical cells and the mineralized foci were detected as red spotted areas stained with Alizarin red (Figure 4). The induced chondrogenic differentiation was detected by the presence of glycosaminoglycans within the extracellular matrix stained with toluidine blue as violet foci (Figure 5). The differentiated MSCs to lipocytes, underwent morphological changes and produced vacuoles containing lipid droplets detected with oil red O staining as red areas (Figure 6).

MSCs molecular verification

At the molecular basis, RT-PCR, the osteogenic, lipogenic, and chondrogenic differentiation potential of MSCs derived from different sources was further confirmed by expression of specific genes related to differentiated cell lineages (one gene for each cell lineage).

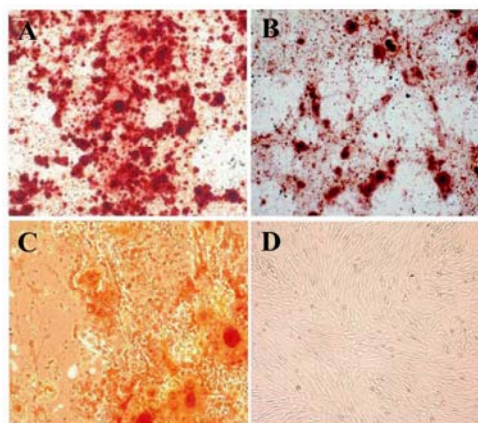


Figure 4. Osteogenic differentiation after 28 days showed marked morphological changes and extensive extracellular calcium deposition in bone marrow; A) Liver; B) and adipose tissue; C) derived MSCs as demonstrated by positive Alizarin Red S staining (200 \times). No mineralized nodules were apparent in non induced cell cultures; D) (200 \times)

The stemness status of isolated MSCs, from 3 sources, was confirmed by expression of 2 related genes (Figure 7).

Discussion

Physiological properties of mesenchymal stem cells including straightforward manipulation, high proliferative capacity, immunomodulation, multilineage differentiation potential, and tropism for the healing of injuries render them a potentially powerful candidate cell type for regenerative medicine as well as for the study of cellular differentiation^{5,28}. The plasticity, self-renewal, and multi-lineage potential of MSCs have generated growing interest in their use in a constantly expanding variety of experimental regenerative therapies and transplantation purposes^{29,30}. Neverthe-

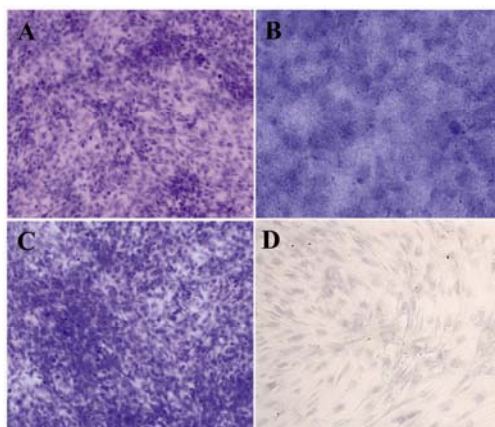


Figure 5 Chondrogenic differentiation after 21 day. In chondroinductive culture, the metachromatic nature of the matrix was determined by the toluidine blue staining of glycosaminoglycans as purple stained loci in bone marrow; A) (200×) liver; B) (400×) and adipose tissue; C) (200×) derived MSCs. No stained foci were observed in non induced cell cultures; D) (400×)

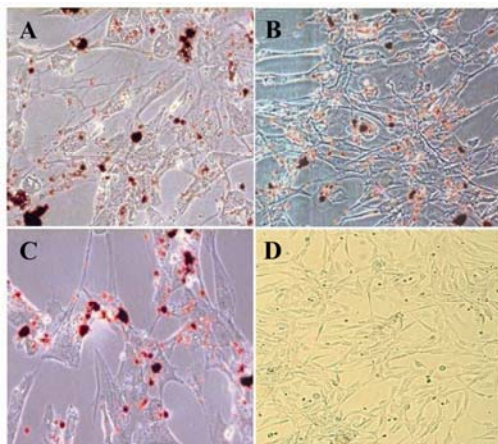


Figure 6. Adipogenic differentiation after 21 days. In adipogenic cultures, formation of lipid droplets within the cytoplasm of the cells was quite slow and were gradually occupied the whole cells. Accumulation of intracellular lipid droplets was determined as red loci following oil red O staining in bone marrow, A) Liver; B) and adipose tissue; C) derived MSCs (400×). No stained foci were observed in non induced cell cultures; D) (200×)

less, further studies in suitable animal models are needed to translate the potential of MSCs into clinical applications.

The discovery of mesenchymal stem cells is credited with Alexander Friedenstein and associates, who over 46 years ago demonstrated that pieces of bone marrow trans-

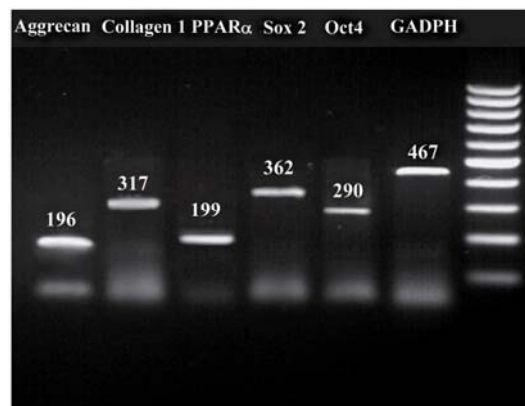


Figure 7. Representative gel photographs of RT-PCR analysis of important gene transcripts related to stemness status of MSCs and one related gene to each cell lineage (adipocyte, osteocyte, and chondrocyte). GAPDH was considered as reference gene

planted under the renal capsule of mice, formed a heterotopic osseous tissue that was self-maintaining, self-renewing, and capable of supporting host cell hematopoiesis²⁰. Furthermore, Friedenstein showed that the osseous-forming activity of bone marrow was contained within the fibroblastoid cell fraction isolated by preferential attachment to tissue culture plastic. Nowadays, B-MSC has been the traditional source of human MSCs (hMSCs) for basic research and therapeutic purposes because of its routine harvest and safe procedure^{20,31}.

According to the previous investigations, MSCs are present at low frequencies in bone marrow samples^{1,32}. Therefore, finding alternative sources of mesenchymal stem cells for research and therapeutic purposes are necessary. In the present study, adherent spindle-shaped cells derived from fetal ovine liver, adipose tissue and bone marrow were collected and examined in terms of their growth characteristics, culture requirements and tri-potent differentiation potential that is proposed as a criterion indicating MSCs identity of the cells in question.

These cells show a varying cellular morphology from spindle-shaped and elongated, that mostly were observed, towards more cuboidal fibroblast-like cells with shorter cytoplasmic extensions (Figure 1). More specif-

ically, Sekiya and colleagues demonstrated that hMSCs undergo a time-dependent morphological transition from thin (small), spindle-shaped cells (considered stem cells or early progenitors) to wider (larger) spindle-shaped cells (looked like more mature cells) when cells were plated at 1 to 1000 $cells/cm^2$ ³³. Moreover, Jung *et al* showed that the small, spindle-shaped cells proliferate more rapidly and have a higher level of multipotentiality, compared to the slowly replicating large cells, which have lost most of their multipotentiality³⁴.

The morphology and size of hMSCs may also be dependent upon culture conditions (*e.g.*, growth media, culture surface). For instance, the cultured hMSCs in bFGF-supplemented media were smaller and proliferated more rapidly than those cultured in bFGF-lacking conditions³⁵. Culture surfaces (*e.g.*, treated with Matrigel) might also affect the morphology³⁶.

The ability of cells to reform colonies, a primitive measure of progenitor cell activity, was initially determined by using a colony-forming assay. Considering the growth characteristics of three sources of MSCs the highest PDT and lowest colony forming unit were observed in A-MSCs. Therefore, it could be inferred that whenever the fast propagation of MSCs is demanded adipose tissue is not a good candidate compared to the liver and bone marrow. Though, the ease of access and the sufficient amount of tissue in isolation and purification of MSCs is another factor that should be considered in choosing the source of MSCs (Table 1).

The colony numbers and PDT in B-MSCs and L-MSCs were comparable to the corresponding values in MSCs derived from different sources in other species³⁷⁻⁴⁰. Morphologically, human and porcine bone marrow MSCs comprised of approximately 2-3% of the total nuclear cell fraction in the bone marrow with PDT of 30-50 *hr* and 50-55 *hr*, respectively^{38,41,42}. The B-MSC PDT in rat is varied between 24 *hr* to 62 *hr*^{39,43}. In pubertal sheep, the B-MSCs PDT was 24.94 *hr* when plated

at 100 $cells/cm^2$ ³², though in another report it was at about 50 *hr*⁴ which was slightly different from the results of our study (31 *hr*).

The PDT in fetal L-MSCs was slightly lower than what reported in another study (28 *hr* vs. 36 *hr*)⁴⁴. It seems apart from the tissue source of MSCs, the site from which the tissue is obtained can influence the PDT. In this context, the PDT in epididymal and epicardial adipose tissue derived stem cells has been reported 69±16 *hr* and 45±9.6 *hr*, respectively⁴⁵.

There are several approaches to improve conventional tissue culture conditions in order to get a higher number of cells and to prevent loss of their differentiation capacity. Studies on the effect of serum source^{46,47} and the use of growth and differentiation factors like, bone morphogenetic proteins and fibroblast growth factors are all of high concerns^{48,49}.

FBS contains a high content of growth factors as well as nutritional and physiochemical compounds required for cell maintenance and growth³⁴. Therefore, cell propagation is largely dependent on the presence of FBS in culture medium^{1,40}. FBS-based media is a common standard medium used for propagation of hMSCs for basic research and clinical studies^{34,46}. Therefore, any experimental work with MSCs requires *in vitro* expansion of the cells with the most appropriate concentration of serum.

According to the previous investigations, the number and proportion of MSCs in different tissues is quiet low, therefore, their expansion is necessary before performing clinical studies³². To do so, we cultivated three sources of ovine MSCs in the presence of different concentrations of FBS to determine the least appropriate serum concentration with the highest mitogenic effect. This is of utmost importance especially at cell therapy strategies where the rapid expansion of cells would be desired. In our study condition, there was a positive relationship between serum concentration and proliferative capacity of MSCs. The MSCs exhibited the highest proliferation when being provided with a medium supple-

mented with 20% FBS. This finding was in contrast to other study in which the maximum fold increase in ovine and goat MSCs was achieved at 15% serum concentration^{32,40}. There was, however, no significant difference between 15% and 20% serum in rat and mouse MSCs propagation^{50,51}.

Concerning the effect of serum on cell propagation one should bear in mind how serum concentration may influence the quality, functionality, immunomodulatory properties, and differentiation potential of MSCs in *in vitro* and *in vivo* conditions, especially in tissue engineering.

The other factor affecting the rate of MSCs proliferation would be the cell seeding density at culture initiation. The cell proliferation rate is of utmost importance especially at cell therapy strategies where the rapid expansion of cells would be desired and can be used to optimize the culture condition for maximum proliferation of the cells⁴⁵. Based on our findings, there was an inverse correlation between MSCs seeding density and their proliferation which was manifested as a reduction of fold increase concurrent with the increasing of cell seeding density at culture initiation, except for L-MSC at 300 cell seeding density (Table 3). Moreover, in B-MSCs the fold increase at 300 *cells/cm*² cell density, though insignificant, was higher than 100 *cells/cm*² cell density. This finding, somehow, was in agreement with the reports indicating 100 *cells/cm*² cell density is superior in B-MSCs proliferation in sheep³², goat⁴⁰, mouse⁵¹, and rat⁵⁰ species.

Despite the higher fold increase at lower densities and considering the finite lifespan of MSCs, the question of how the higher population doubling in lower densities groups may influence the quality and differentiation potential of MSCs remains to be investigated. On the other hand, whether the proliferated cells at lower densities, at culture initiation, have proliferation and differentiation potential similar to cells with higher densities is controversial. Concerning the multilineage differentiation potential of the three sources of MSCs, their multilineage differentiation charac-

teristics were confirmed by their differentiation into osteoblasts, adipocytes, and chondrocytes under appropriate culture conditions. Additionally, the differentiation status of MSCs was further confirmed by mRNA expression analysis. No difference was observed in multilineage differentiation potential and mRNA expression analysis between different sources of MSCs.

Conclusion

In conclusion, in our study condition all the three sources of fetal sheep MSCs had the same multilineage differentiation potential. Among the three sources of MSCs the bone marrow and adipose tissue derived MSCs had the highest and the lowest proliferative potential, respectively. In all the three sources of MSCs, there was a negative relationship between cell seeding density at culture initiation and proliferative capacity except for the liver and bone marrow derived MSCs at 300 *cells/cm*² density. Considering both the PDT and proliferative potential where the rapid expansion of cells would be desired, the liver derived MSCs are good alternative for bone marrow derived MSCs.

Acknowledgement

The authors would like to thank the Avicenna Research Institute for technical and financial supports, ACECR, Tehran, Iran.

References

1. Pittenger MF, Mackay AM, Beck SC, Jaiswal RK, Douglas R, Mosca JD, et al. Multilineage potential of adult human mesenchymal stem cells. *Science* 1999;284(5411):143-147.
2. Deans RJ, Moseley AB. Mesenchymal stem cells: biology and potential clinical uses. *Exp Hematol* 2000;28(8):875-884.
3. Giovannini S, Brehm W, Mainil-Varlet P, Nestic D. Multilineage differentiation potential of equine blood-derived fibroblast-like cells. *Differentiation* 2008;76(2):118-129.
4. Rentsch C, Hess R, Rentsch B, Hofmann A, Manthey S, Scharnweber D, et al. Ovine bone marrow mesenchymal stem cells: isolation and characteriza-

- tion of the cells and their osteogenic differentiation potential on embroidered and surface-modified polycaprolactone-co-lactide scaffolds. *In Vitro Cell Dev Biol Animal* 2010; 46(7):624-634.
5. Kolf CM, Cho E, Tuan RS. Mesenchymal stromal cells. *Biology of adult mesenchymal stem cells: regulation of niche, self-renewal and differentiation. Arthritis Res Ther* 2007;9(1):204.
 6. Zuk PA, Zhu M, Mizuno H, Huang J, Futrell JW, Katz AJ, et al. Multilineage cells from human adipose tissue: implications for cell-based therapies. *Tissue Eng* 2001;7(2):211-228.
 7. In 't Anker PS, Scherjon SA, Kleijburg-van der Keur C, de Groot-Swings GM, Claas FH, et al. Isolation of mesenchymal stem cells of fetal or maternal origin from human placenta. *Stem Cells* 2004; 22(7):1338-1345.
 8. Malgieri A, Kantzari E, Patrizi MP, Gambardella S. Bone marrow and umbilical cord blood human mesenchymal stem cells: state of the art. *Int J Clin Exp Med* 2010;3(4):248-269.
 9. Goodwin HS, Bicknese AR, Chien SN, et al. Multilineage differentiation activity by cells isolated from umbilical cord blood: expression of bone, fat, and neural markers. *Biol Blood Marrow Transplant* 2001;7(11):581-588.
 10. Panepucci RA, Siufi JL, Silva WA Jr, Proto Siquiera R, Neder L, Orellana M, Rocha V, et al. Comparison of gene expression of umbilical cord vein and bone marrow-derived mesenchymal stem cells. *Stem Cells* 2004;22(7):1263-1278.
 11. Giovannini S, Brehm W, Mainil-Varlet P, Nestic D. Multilineage differentiation potential of equine blood-derived fibroblast-like cells. *Differentiation* 2008;76(2):118-129.
 12. Williams JT, Southerland SS, Souza J, Calcutt AF, Cartledge RG. Cells isolated from adult human skeletal muscle capable of differentiating into multiple mesodermal phenotypes. *Am Surg* 1999;65 (1):22-26.
 13. Alexanian AR, Sieber-Blum M. Differentiating adult hippocampal stem cells into neural crest derivatives. *Neuroscience* 2003;118(1):1-5.
 14. Huang GT, Gronthos S, Shi S. Mesenchymal stem cells derived from dental tissues vs. those from other sources: their biology and role in regenerative medicine. *J Dent Res* 2009;88(9):792-806.
 15. Campagnoli C, Roberts IA, Kumar S, Bennett PR, Bellantuono I, Fisk NM. Identification of mesenchymal stem/progenitor cells in human first-trimester fetal blood, liver, and bone marrow. *Blood* 2001;98(8):2396-2402.
 16. In't Anker PS, Noort WA, Kruisselbrink AB, Scherjon SA, Beekhuizen W, Willemze R, et al. Non-expanded primary lung and bone marrow-derived mesenchymal cells promote the engraftment of umbilical cord blood-derived CD34(+) cells in NOD/SCID mice. *Exp Hematol* 2003;31(10):881-889.
 17. Mensing N, Gasse H, Hambruch N, Haeger JD, Pfarrer C, Staszky C. Isolation and characterization of multipotent mesenchymal stromal cells from the gingiva and the periodontal ligament of the horse. *BMC Vet Res* 2011;7:42.
 18. Raoufi MF, Tajik IP, Dehghan MM, Eini F, Barin A. Isolation and differentiation of mesenchymal stem cells from bovine umbilical cord blood. *Reprod Domest Anim* 2011;46(1):95-99.
 19. McCulloch EA, Till JE. The radiation sensitivity of normal mouse bone marrow cells, determined by quantitative marrow transplantation into irradiated mice. *Radiat Res* 1960;13(1):115-125.
 20. Friedenstein AJ, Piatetzky-Shapiro II, Petrakova KV. Osteogenesis in transplants of bone marrow cells. *J Embryol Exp Morphol* 1966;16(3):381-390.
 21. Friedenstein AJ. Stromal mechanisms of bone marrow: cloning in vitro and retransplantation in vivo. *Haematol Blood Transfus* 1980;25:19-29.
 22. Zuk PA, Zhu M, Ashjian P, De Ugarte DA, Huang JI, Mizuno H, et al. Human adipose tissue is a source of multipotent stem cells. *Mol Biol Cell* 2002;13(12):4279-4295.
 23. Kern S, Eichler H, Stoeve J, Klüter H, Bieback K. Comparative analysis of mesenchymal stem cells from bone marrow, umbilical cord blood, or adipose tissue. *Stem Cells* 2006;24(5):1294-1301.
 24. Suzuki A, Zheng YW, Kondo R, Kusakabe M, Takada Y, Fukao K, et al. Flowcytometric separation and enrichment of hepatic progenitor cells in the developing mouse liver. *Hepatology* 2000;32(6): 1230-1239.
 25. Taniguchi H, Suzuki A, Zheng Y, Kondo R, Takada Y, Fukunaga K, et al. Usefulness of flowcytometric cell sorting for the enrichment of hepatic stem and progenitor cells in the liver. *Transplant Pro* 2000;32(2):249-251.
 26. Fiegel HC, Lange C, Kneser U, Lambrecht W, Zander AR, Rogiers X, et al. Fetal and adult liver stem cells for liver regeneration and tissue engineering. *J Cell Mol Med* 2006;10(3):577-587.
 27. Chen PM, Yen ML, Liu KJ, Sytwu HK, Yen BL. Immunomodulatory properties of human adult and fetal multipotent mesenchymal stem cells. *J Biomed Sci* 2011;18:49.

28. Moreno R, Martínez-González I, Rosal M, Farwati A, Gratacós E, Aran JM. Characterization of mesenchymal stem cells isolated from the rabbit fetal liver. *Stem Cells Dev* 2010;19(10):1579-1588.
29. Petersen BE, Bowen WC, Patrene KD, Mars WM, Sullivan AK, Murase N, et al. Bone marrow as a potential source of hepatic oval cells. *Science* 1999; 284(5471):1168-1170.
30. Schwartz RE, Reyes M, Koodie L, Jiang Y, Blackstad M, Lund T, et al. Multipotent adult progenitor cells from bone marrow differentiate into functional hepatocyte-like cells. *J Clin Invest* 2002;109(10): 1291-1302.
31. Wagner W, Horn P, Castoldi M, Diehlmann A, Bork S, Saffrich R, et al. Replicative senescence of mesenchymal stem cells: a continuous and organized process. *PLoS One* 2008;3(5):e2213.
32. Eslaminejad MB, Falahi F, Nazarian H, Taghiyar L, Daneshzadeh MT. Differentiation potential and culture requirements of mesenchymal stem cells from ovine bone marrow for tissue regeneration applications. *IJVS* 2007;2(5):53-65.
33. Sekiya I, Larson BL, Smith JR, Pochampally R, Cui JG, Prockop DJ. Expansion of human adult stem cells from bone marrow stroma: conditions that maximize the yields of early progenitors and evaluate their quality. *Stem Cells* 2002;20(6):530-541.
34. Jung S, Panchalingam KM, Rosenberg L, Behie LA. Ex vivo expansion of human mesenchymal stem cells in defined serum-free media. *Stem Cells Int* 2012; ID 123030, doi:10.1155/2012/123030.
35. Solchaga LA, Penick K, Porter JD, Goldberg VM, Caplan AI, Welter JF. FGF-2 enhances the mitotic and chondrogenic potentials of human adult bone marrow-derived mesenchymal stem cells. *J Cell Physiol* 2005;203(2):398-409.
36. Qian L, Saltzman WM. Improving the expansion and neuronal differentiation of mesenchymal stem cells through culture surface modification. *Biomaterials* 2004;25(7-8):1331-1337.
37. Miyazaki M, Hardjo M, Masaka T, Tomiyama K, Mahmut N, Medina RJ, et al. Isolation of a bone marrow-derived stem cell line with high proliferation potential and its application for preventing acute fatal liver failure. *Stem Cells* 2007;25(11): 2855-2863.
38. Peterbauer-Scherb A, van Griensven M, Meinel A, Gabriel C, Redl H, Wolbank S. Isolation of pig bone marrow mesenchymal stem cells suitable for one-step procedures in chondrogenic regeneration. *J Tissue Eng Regen Med* 2010;4(6):485-490.
39. Alge DL, Zhou D, Adams LL, Wyss BK, Shadday MD, Woods EJ, et al. Donor-matched comparison of dental pulp stem cells and bone marrow-derived mesenchymal stem cells in a rat model. *J Tissue Eng Regen Med* 2010;4(1):73-81.
40. Eslaminejad MB, Nazarian H, Falahi F, Taghiyar L, Daneshzadeh MT. Ex vivo Expansion and Differentiation of Mesenchymal Stem Cells from Goat Bone Marrow. *Iran J Basic Med Sci* 2009;12(2): 70-79.
41. Bruder SP, Jaiswal N, Haynesworth SE. Growth kinetics, self-renewal, and the osteogenic potential of purified human mesenchymal stem cells during extensive subcultivation and following cryopreservation. *J Cell Biochem* 1997;64(2):278-294.
42. Bianco P, Riminucci M, Gronthos S, Robey PG. Bone marrow stromal stem cells: nature, biology, and potential applications. *Stem Cells* 2001;19(3): 180-192.
43. Neuhuber B, Swanger SA, Howard L, Mackay A, Fischer I. Effects of plating density and culture time on bone marrow stromal cell characteristics. *Exp Hematol* 2008;36(9):1176-1185.
44. Schmelzer E, Zhang L, Bruce A, Wauthier E, Ludlow J, Yao HL, et al. Human hepatic stem cells from fetal and postnatal donors. *J Exp Med* 2007; 204(8):1973-1987.
45. Eslaminejad MB, Mardpour S, Ebrahimi M. Mesenchymal stem cells derived from rat epicardial versus epididymal adipose tissue. *Iran J Basic Med Sci* 2010;14(1):25-34.
46. Burgener A, Butler M. Medium development for cell culture technology for pharmaceutical and cell-based therapies. Fla, USA: CRC Press, Boca Raton; 2006. P. 41-79.
47. Mannello F, Tonti GA. Concise review: no breakthroughs for human mesenchymal and embryonic stem cell culture: conditioned medium, feeder layer, or feeder-free; medium with fetal calf serum, human serum, or enriched plasma; serum-free, serum replacement nonconditioned medium, or ad hoc formula? All that glitters is not gold!. *Stem Cells* 2007;25(7):1603-1609.
48. Wang JJ, Ye F, Cheng LJ, Shi YJ, Bao J, Sun HG, et al. Osteogenic differentiation of mesenchymal stem cells promoted by overexpression of connective tissue growth factor. *J Zhejiang Univ Sci B* 2009;10(5):355-367.
49. Friedman MS, Long MW, Hankenson KD. Osteogenic differentiation of human mesenchymal stem cells is regulated by bone morphogenetic protein-6. *J Cell Bio* 2006;98(3):538-554.

50. Eslaminejad MB, Nazarian H, Taghiyar L. Mesenchymal stem cells with high growth rate in the supernatant medium from rat bone marrow primary culture. *J Babol Uni Med Sci* 2008;10(2):12-22.

51. Eslaminejad MB, Nikmahzar A, Taghiyar L, Nadri S, Massumi M. Murine mesenchymal stem cells isolated by low density primary culture system. *Dev Growth Differ* 2006;48(6):361-370.