

The p53 Modulated Cytotoxicity of *Ophiocoma scolopendrina* Polysaccharide Against Resistance Ovarian Cancer Cells

Elaheh Amini¹, Javad Baharara^{2*}, Mahbube Afzali³, and Najme Nikdel³

1. Department of Cellular & Molecular Biology, Faculty of Biological Sciences, Kharazmi University, Tehran, Iran

2. Department of Biology, Research Center for Animal Development Applied Biology, Mashhad Branch, Islamic Azad University, Mashhad, Iran

3. Department of Biology, Mashhad Branch, Islamic Azad University, Mashhad, Iran

Abstract

Background: Marine environment is a valuable source of bioactive compounds with variable medicinal properties. Previously, it was shown that *Ophiocoma erinaceus* extracted polysaccharide has prominent cytotoxic effect on HeLa human cervical cancer cells. In the present study, the anti-cancer properties of polysaccharide extracted from *Ophiocoma scolopendrina* (*O. scolopendrina*) were examined in comparison with paclitaxel as a conventional drug against resistant ovarian cancer; also, its related mechanism against A2780cp ovarian cancer cells was investigated.

Methods: The A2780cp cancer cells and NIH3T3 normal cells were cultured and treated with different concentrations of polysaccharide extracted from *O. scolopendrina* for 24 hr and 48 hr. Then, cell toxicity was studied by MTT assay, morphology of cells was observed under inverted microscopy and the type of induced cancer cell death was assessed by annexin V-FITC, propidium iodide and acridine orange staining. Finally, the apoptosis pathway was determined by measurement of caspase-3 and caspase-9 activity and assessment of p53 and Bcl-2. The statistical analysis was performed by SPSS software, one way ANOVA and $p < 0.05$ was considered significant.

Results: Our observations from MTT assay and morphological assessment exhibited that *O. scolopendrina* isolated polysaccharide inhibited proliferation of ovarian cancer cells with IC_{50} of 35 $\mu\text{g/ml}$, while paclitaxel suppressed tumor cell growth with $IC_{50}=10$ $\mu\text{g/ml}$. In contrast, MTT observations revealed low cytotoxicity of these chemotherapeutic agents against NIH3T3 normal cells. Also, the analysis correlated with induced cell death elucidated that concurrent treatment of polysaccharide plus paclitaxel had a further anti-cancer effect against A2780cp cells mainly through restoration of p53 and mitochondrial apoptosis cell death induction.

Conclusion: Taken together, our research supports the finding that application of polysaccharide extracted from *O. scolopendrina* can be considered a promising marine chemotherapeutic approach for advancing efficacy of paclitaxel in treatment of resistant ovarian cancer. Additional *in vivo* experiments are required to elucidate the role of brittle star polysaccharides in animal and clinical trials.

Avicenna J Med Biotech 2019; 11(3): 208-214

Keywords: Apoptosis, Ovarian neoplasms, Paclitaxel

Introduction

Cancer is a chronic and fatal disease worldwide and ovarian cancer is the fourth women deadly disorder, especially in older women^{1,2}. Current therapeutic ovarian cancer methods include surgery and the use of chemotherapy is limited due to harmful side effects^{3,4}. Chemotherapeutic drugs have created multidrug resistance that induces noticeable challenge for oncologists in treatment of cancer⁵. To date, several chemotherapeutic drugs have been introduced to interfere

with ovarian carcinoma, but among suggested anti-cancer drugs, paclitaxel is a favorable anti-tumor agent which creates cytotoxicity *via* apoptosis triggering in many tumors, particularly in ovarian cancer⁶. Nevertheless, there are unwanted complexities for ovarian cancer treatment³. Thus, many researches attempted to find novel therapeutic methods to overcome ovarian drug resistance^{4,5}.

Natural products occupy the main source of chemo-

* Corresponding author:
Javad Baharara, Ph.D.,
Department of Biology, Research
Center for Animal Development
Applied Biology, Mashhad
Branch, Islamic Azad University,
Mashhad, Iran
Tel/Fax: +98 51 38437092
E-mail:
baharara78@gmail.com
Received: 22 Jan 2018
Accepted: 11 Apr 2018

therapeutic agents in the past few decades that have attracted researchers' attentions⁷. The low toxicity and minimum levels of side effects in natural products give them priority in comparison to synthetic chemotherapeutic leads⁸. Among various biological effects of natural metabolites, their capacity for inhibition of cancer can be noted as the therapeutic importance⁷.

Polysaccharides are biocompounds that have antioxidant, anti-microbial and anti-coagulant activities⁹. In addition, in recent years, a growing body of investigations concentrated on anti-cancer potential of natural polysaccharides¹⁰. The used mechanisms by these compounds are tumor growth suppression, apoptosis induction and metastasis prevention¹¹. Apoptosis or programmed cell death is a process that is commonly found in living organisms for eradication of redundant or damaged cells¹². The morphological features in apoptotic cells are shrinkage of cell membrane, DNA fragmentation and apoptotic body generation¹³.

The ocean is composed of tremendous structurally bioactive substances with various pharmaceutical properties¹⁴. Marine flora and fauna are unique sources of natural compounds with biological properties such as anti-microbial, anti-viral, antioxidant and anti-cancer effects¹⁵. Aquatic echinoderms are accounted as abundant marine invertebrates which contain physiologically active metabolites required in biomedicine¹⁶.

Among biomedical investigation in echinoderms (composed of Asteroidea: sea stars or starfish, Crinoid: crinoids, Ophiuroidea: brittle stars, Echinoidea: sea urchins and Holothuroidea: sea cucumbers), brittle stars (Ophiuroidea) possess unknown bioactive substances rather than starfish (Asteroidea) and sea cucumbers (Holothuroidea) that are related to their therapeutic properties and fewer studies have been conducted on such properties in the past three decades¹⁴. Brittle star (Ophiuroidea) is an aquatic invertebrate with the capacity for arm regeneration¹⁷. To date, the presence of some bioactive substances such as terpenes, sulfated sterols, carotenoid sulfate, phenylpropanoids and naphthoquinones in brittle star have been proved which may be important in anti-cancer therapy¹⁸.

Considering the bioactivity of marine compounds, this study was designed to investigate the concomitant cytotoxic effect of polysaccharide isolated from Persian Gulf brittle star *Ophiocoma scolopendrina* (*O. scolopendrina*) and paclitaxel on A2780cp cells and their related mechanism against human ovarian cancer cells.

Materials and Methods

Reagents

A2780cp cell line (Human epithelial ovarian carcinoma) was purchased from NCBI (National Cell Bank of Iran). Trypsin/EDTA (1X) and fetal bovine serum were provided from Gibco (USA), RPMI-1640 and Trypan blue were purchased from Bio idea (Iran), and penicillin/streptomycin and phosphate buffer saline

were purchased from PAA (Austria). PI (Propodium Iodide), DAPI (4', 6-diamidino-2-phenylindole dihydrochloride) kit and MTT [3-(4, 5-dimethylthiazol-2-yl) 2, 5 di phenyl tetrazolium bromide] and acridine orange/propodium iodide were purchased from Sigma (USA). Annexin V-FITC kit and Caspase-9 assay and Caspase-3 assay kit were prepared from Abcam (UK). Taxol or paclitaxel was purchased from Sigma (USA).

Extraction of polysaccharide

Firstly, morphometric estimation of *O. scolopendrina* was conducted at the Research Center of Applied Biology at Mashhad Branch of Islamic Azad University. Then, specimens were washed and dried in the dark. Then, 500 gr dried brittle star were added to 100 ml water, boiled for 3 hr and centrifuged and filtered. In the next step, 3 volumes of 95% (v/v) ethanol were added and incubated at 4°C overnight. Then, specimen was centrifuged and the precipitate was dissolved in distilled water and centrifuged for 20 min to get aqueous supernatant lyophilized (total polysaccharide)¹⁹.

Cell culture

The A2780cp cells and NIH3T3 fibroblast normal cells were cultured in RPMI 1640, DMEM medium with 10% FBS and 1% penicillin/streptomycin in incubator at 37°C containing 5% CO₂, respectively.

MTT assay

A2780cp cells and NIH3T3 were cultured and treated with different concentrations of extracted polysaccharide from *O. scolopendrina* (12.5, 25, 50 µg/ml), taxol (5, 10, 20, 40 µg/ml) and synergism treatment was done by brittle star polysaccharide and taxol (12.5 µg/ml polysaccharide +10 µg/ml taxol, 12.5 µg/ml polysaccharide +25 µg/ml taxol) for 24 and 48 hr. After a certain time, the cells were incubated with MTT for 4 hr and DMSO was added to dissolve formazan according to the company's protocol. Finally, the absorbance of each well was measured at a wavelength of 560 nm by a spectrophotometer.

Evaluation of induced cell death

DAPI staining: 4', 6-diamidino-2-phenylindole dihydrochloride staining was used to evaluate the morphology of nuclei. In this assay, A2780cp ovarian cancer cells were seeded on a coverslip and incubated with the desired concentration of brittle star polysaccharide and paclitaxel (IC₅₀) for 24 hr. Then, the cells were washed with PBS and DAPI was added and cells were incubated for 10 min in the dark and morphological changes were observed under the fluorescence microscope.

Acridine orange/propodium iodide staining

The apoptotic morphological characteristics of cells were ascertained by acridine orange/propodium iodide staining. The ovarian tumor cells were cultured and treated with IC₅₀ concentration of isolated polysaccharide and taxol and synergism treatment for 24 hr. Then, the cells were washed with PBS and acridine orange (20 µg/ml) and propodium iodide (20 µg/ml) were add-

ed (1:1). Eventually, the cells were observed under a fluorescence microscope.

Annexin V-FITC-PI

Annexin/PI method was used to assess phosphatidylserine exclusion on the extracellular side of apoptotic cells. For this purpose, the A2780cp cells were seeded and treated with IC₅₀ concentrations of polysaccharide and paclitaxel, according to the company's protocol. Subsequently, the tumor cells were suspended in 500 μ l 1X binding buffer. Thereafter, 5 μ l annexin V-FITC and 5 μ l propidium iodide were added and incubated for 5 min at room temperature in the dark. Then, they were analyzed using flow cytometry.

PI staining

The evaluation of apoptosis was performed using PI assay. The A2780cp cells were cultured and treated with IC₅₀ concentrations of polysaccharide alone or in synergism state for 24 hr and cell suspension was centrifuged and mixed with 700 μ l PI solution for 20 min in the dark. Next, the fluorescence of stained cells was evaluated using a FACScan laser flow cytometer.

Caspase-3 and Caspase-9 assay

Ovarian cells were cultured and treated with anti-proliferative concentrations of isolated polysaccharide or paclitaxel for 24 hr. Then, cell lysis buffer, 2X reaction buffer and LEHD-pNA substrate were added to untreated and treated cells according to the kit protocol. At last, the absorbance was read at 405 nm using plate reader.

Apoptosis related mRNA expression

The expression of p53 and Bcl-2 mRNA was analyzed by RT-PCR. The total cellular RNAs of ovarian cancer cells treated with or without extracted polysaccharide, paclitaxel and combination treatment were isolated using the high pure RNA isolation kit (Roche, Germany) and reverse transcribed to cDNA using the easy cDNA synthesis kit (Pars Tous, Iran) according to manufactures protocol. Then, RT-PCR was performed with 10 \times buffer, MgCl₂ 25 mM, d NTP, and Taq DNA polymerase. The forward and reverse primer sequence was: 5' CCAGGGCAGCTACGGTTTC 3' forward for p53 and 5' CTCCGTCATGTGCTGTGACTG 3' reverse for p53. The forward and reverse primer sequences for Bcl-2 were designed as 5' CATGTGTGTG GAGAGCGTCAAC 3' and 5' CAGATAGGCACCCA GGGTGAT 3'. Following amplification, PCR products were subjected to electrophoresis in a 2% agarose gel.

Data analysis

The statistical analysis was performed by SPSS software, one way ANOVA and p<0.05 was considered significant.

Results

MTT assay

MTT analysis showed that treatment with brittle star polysaccharide at concentration of 30 μ g/ml (p<0.01) could be considered as IC₅₀. Incubation with various

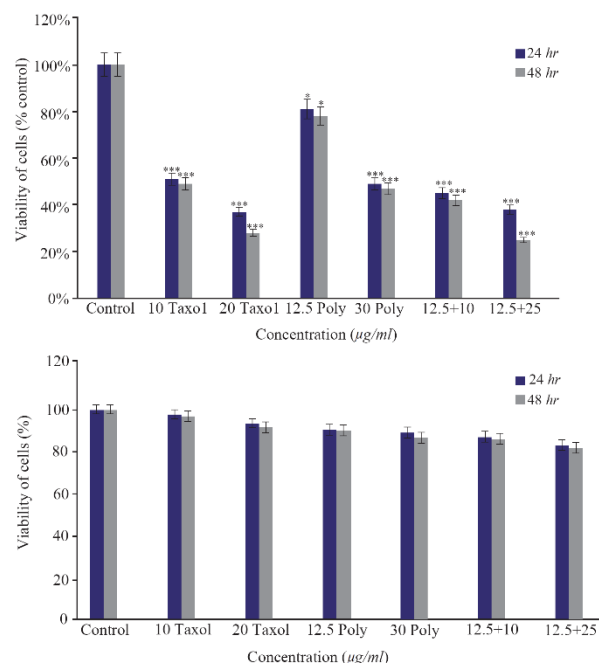


Figure 1. The cytotoxic effect of brittle star polysaccharide and paclitaxel on A2780cp cancer cells (Upper) and NIH3T3 normal cells (Lower) were studied with MTT assay. The cancer and normal cells were classified in two parts, control (Culture medium RPMI 10%) and treatment groups which were exposed to different concentrations of brittle star polysaccharide and paclitaxel for 24 and 48 hr. The data are represented as mean \pm SD and *p<0.05, **p<0.005 and ***p<0.001 were considered significant.

concentrations of taxol exhibited that paclitaxel inhibited 50% of ovarian cancer cell growth at 10 μ g/ml (p<0.01). However, treatment with extracted polysaccharide and paclitaxel simultaneously exerted more cytotoxicity on ovarian cancer cells, so that IC₅₀ concentration was determined as 12.5 μ g/ml and 10 μ g/ml (p<0.01) for polysaccharide and taxol, respectively (Figure 1). Further, there was no significant cytotoxicity of brittle star polysaccharide and taxol on NIH3T3 normal cells.

Morphological observations by inverted microscope

As exhibited in figure 2, the anti-proliferative activity of brittle star polysaccharide and taxol in IC₅₀ concentration on A2780cp cells induced apparent morphological alterations such as reduction of cell volume, cell shrinkage and apoptotic body formation which induced apoptosis in exposure with cytotoxic dosage of brittle star polysaccharide and paclitaxel. Meanwhile, NIH3T3 treated cells didn't show considerable alterations. High quantity of formazan crystals validated the effect of brittle star polysaccharide and taxol on ovarian cancer cells.

DAPI staining

DAPI staining was used to study the nucleus morphological changes under treatment with isolated polysaccharide and paclitaxel. As shown in figure 3, the A2780cp treated cells (By IC₅₀ concentration of brittle stars polysaccharide, paclitaxel and synergism treat

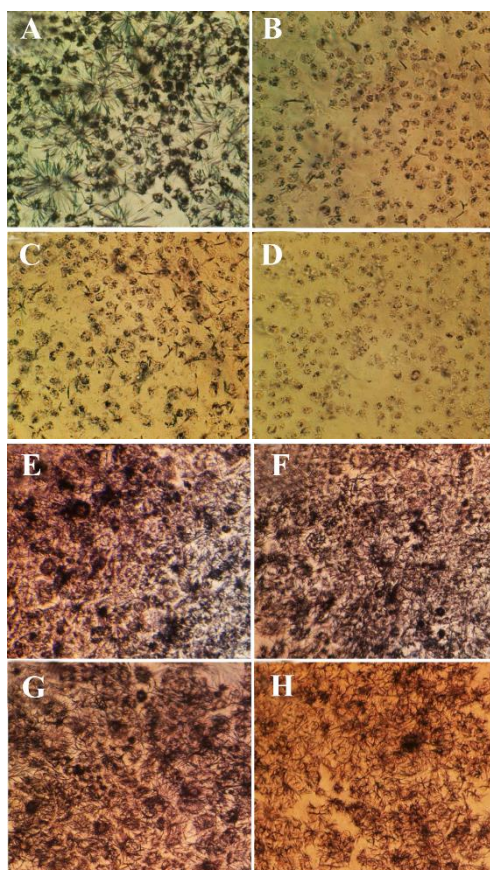


Figure 2. Morphological alterations of A2780cp ovarian cancer cells and NIH3T3 fibroblast cells under exposure to inhibitory concentrations of *O. scolopendrina* polysaccharide and taxol using MTT assay. Reduction of the amount of formazan crystals in cancer cells compared with the untreated cells demonstrated anti-proliferative effect under inverted microscope (Magnification $\times 200$). The emergence of high formazan crystals in NIH3T3 treated cells revealed the effect of extracted polysaccharide and taxol on ovarian cancer cells. A, E) Control, B, F) 10 $\mu\text{g/ml}$ taxol, C, G) 30 $\mu\text{g/ml}$ polysaccharide, D, H) 10 $\mu\text{g/ml}$ taxol +12.5 $\mu\text{g/ml}$ polysaccharide.

ment) revealed DNA fragmentation which confirmed pro-apoptotic effect of brittle stars polysaccharide and paclitaxel, alone or in combination (Figure 3).

Acridine orange/propidium iodide staining

After treatment, acridine orange/propidium iodide staining was conducted to distinguish apoptosis or necrosis induction under exposure with brittle star polysaccharide and paclitaxel. In this assay, green color is a crucial mark of live cells and red color is indicator of dead or necrotic cells. As shown in figure 4, control group showed green cells; meanwhile in treated cells with IC_{50} concentrations of brittle stars polysaccharide, taxol and simultaneous treatment, more cells were apoptotic, which confirmed involvement of apoptosis in cytotoxicity of brittle stars polysaccharide and taxol and their effect on A2780cp cancer cells (Figure 4).

Annexin V-FITC/PI

According to results obtained by flow cytometric analysis of annexin V-FITC/PI kit, the frequent portion

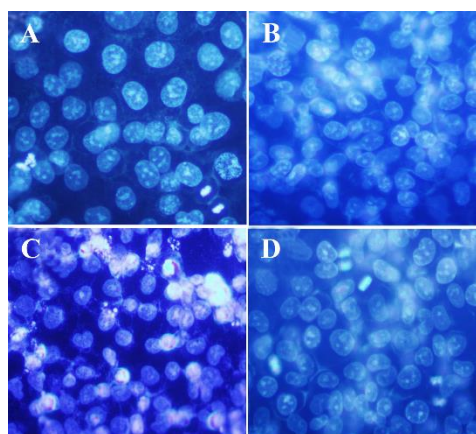


Figure 3. DAPI staining, changes in cell nucleus indicating nuclear fragmentation as clear features of apoptosis in treated cells with 50% inhibitory concentrations of polysaccharide and taxol, under fluorescence microscopy (Magnification $\times 400$). A) Control, B) 10 $\mu\text{g/ml}$ taxol, C) 30 $\mu\text{g/ml}$ polysaccharide, D) 10 $\mu\text{g/ml}$ taxol +12.5 $\mu\text{g/ml}$ polysaccharide.

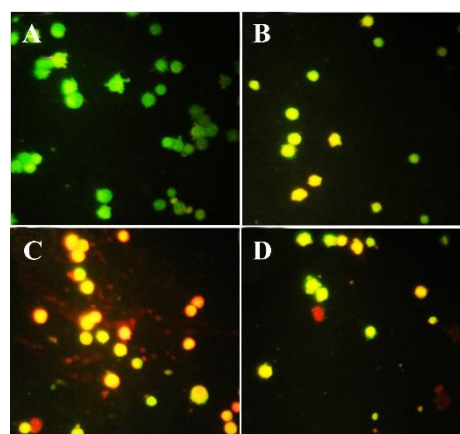


Figure 4. Acridine orange/propidium iodide staining indicated the apoptosis induction under treatment with polysaccharide and taxol. The untreated cells are green and indicator of live cells, yellow and orange color indicates apoptosis (Magnification $\times 400$). A) Control, B) 10 $\mu\text{g/ml}$ taxol, C) 30 $\mu\text{g/ml}$ polysaccharide, D) 10 $\mu\text{g/ml}$ taxol +12.5 polysaccharide $\mu\text{g/ml}$.

of cell death induced by IC_{50} concentrations of brittle stars polysaccharide and paclitaxel alone or in combination was apoptosis which is indicated in figure 5A.

PI assay

In PI assay, apoptotic cells showed a sub-G1 peak. Results from this assay showed that brittle stars polysaccharide and taxol in IC_{50} dosage evoked apoptosis in A2780cp ovarian tumor cells (Figure 5B).

Caspase-3 and caspase-9 colorimetric assay

Caspase-3 and caspase-9 colorimetric assays were conducted to determine the direction of apoptosis induced by polysaccharide and paclitaxel. The results showed that the induced apoptosis pathway by desired dosage of brittle stars polysaccharide, taxol and concurrent treatment of them was caspase-dependent indicating the intrinsic pathway induced by brittle star polysaccharide and paclitaxel (Figure 6).

Cytotoxicity of *Ophiocoma scolopendrina* Polysaccharide Against Resistant Ovarian Cancer Cells

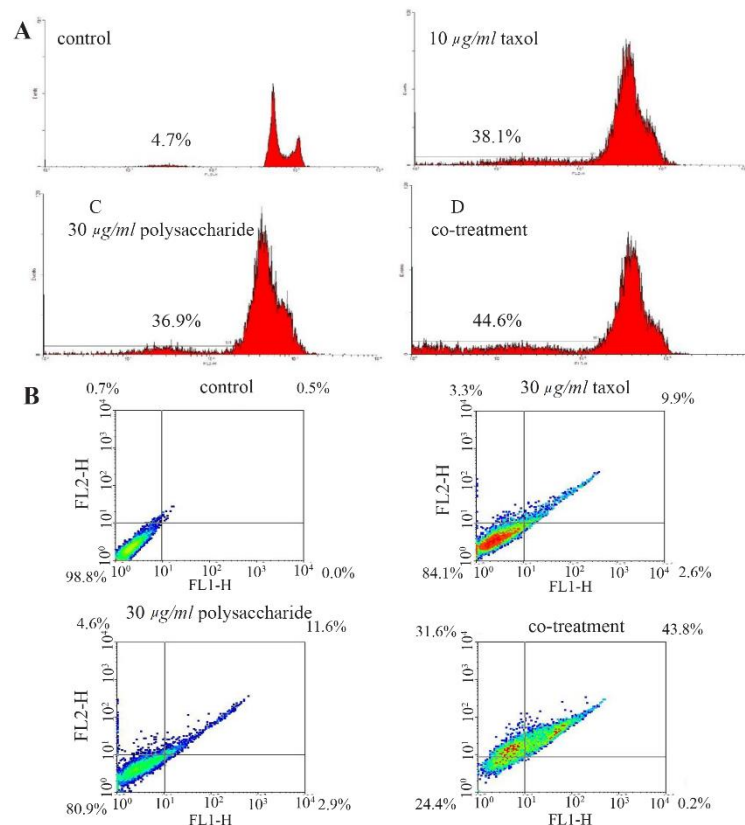


Figure 5. A) Histograms obtained by the annexin V-FITC / PI kit indicating apoptosis induction in A2780cp cells treated with *O. scolopendrina* polysaccharide and paclitaxel. B) PI assay demonstrated sub-G1 peak that is one of most important indicators of apoptosis induced by polysaccharide and paclitaxel. Co- treatment: 10 $\mu\text{g/ml}$ taxol +12.5 $\mu\text{g/ml}$ polysaccharide.

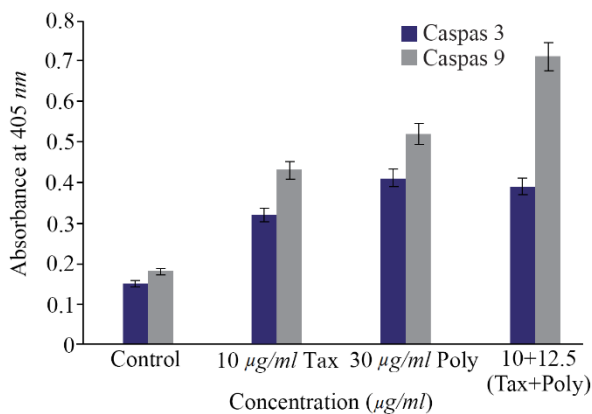


Figure 6. The measurement of caspase-3 and -9 activity in A2780cp cells treated with *O. scolopendrina* polysaccharide and paclitaxel. To determine whether apoptosis induction is caspase-dependent, caspase-3 and caspase-9 assay was used. Histogram represented that the caspase-3 and -9 activity increased under incubation with brittle star polysaccharide and paclitaxel as compared to untreated cells. As shown, the increment of caspase-3 and caspase-9 activity revealed that the *O. scolopendrina* polysaccharide can improve the cytotoxic effect of taxol via intrinsic apoptosis pathway.

p53 and Bcl-2 expression

The analysis of transcriptional levels of two apoptotic-related genes, p53 and Bcl-2 in human ovarian cancer cells incubated with IC₅₀ concentrations of brittle

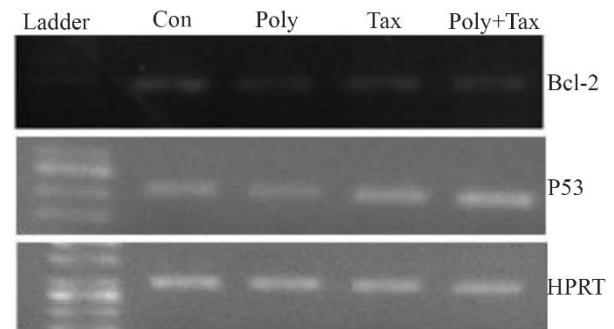


Figure 7. A2780cp cells were treated with *O. erinaceus* extracted polysaccharide, taxol and synergistic treatment. The mRNA expressions of Bax and Bcl-2 were assessed by RT-PCR that demonstrated cytotoxic effect of polysaccharide, taxol and co treatment via intrinsic pathway (con= control or untreated cells, poly=30 $\mu\text{g/ml}$ brittle star polysaccharide, tax=10 $\mu\text{g/ml}$ taxol or paclitaxel, poly+tax=co treatment of 10 $\mu\text{g/ml}$ taxol and 12.5 $\mu\text{g/ml}$ polysaccharide).

tle star polysaccharide, paclitaxel and co treatment showed that the pretreatment of A2780cp cells with polysaccharide, taxol and synergistic treatment down regulated Bcl-2 expression and up regulated p53 mRNA level (Figure 7).

Discussion

In our study, the cytotoxic effect and the type of cell

death induced by polysaccharide extracted from brittle star *O. scolopendrina* were investigated and its concurrent effect with paclitaxel against ovarian cancer cells was evaluated. A2780cp cell line is a human epithelial ovarian carcinoma and taxol is used as a usual, approved and appreciable chemotherapeutic drug for treatment of some cancers like ovarian cancer. This agent was used in this study (As positive control) to assess anti-cancer efficacy of the brittle star polysaccharide against ovarian cancer cells.

So, the single and synergistic effect of brittle star polysaccharide and paclitaxel on A2780cp human ovarian cancer cells was examined. The morphological observation and MTT assay exhibited that the derived polysaccharide induced an anti-growth effect ($IC_{50}=30 \mu\text{g/ml}$) in a dose-time dependent manner on A2780cp cells and taxol exerted 50% cytotoxicity in concentration of $10 \mu\text{g/ml}$. The PI, annexin V-FITC, DAPI and acridine orange/propidium iodide assay showed that the combination treatment of *O. scolopendrina* polysaccharide and taxol induced more apoptosis. Besides, the conducted experiments using caspase-3 and caspase-9 enzymatic activity showed that the apoptosis induced by brittle star extracted polysaccharide and paclitaxel in A2780cp cells was caspase-dependent or related to mitochondrial pathway. As activation of p53 stimulates apoptosis, up-regulation of p53 and down regulation of Bcl-2 under treatment with *O. scolopendrina* polysaccharide and taxol may be an effective mechanism of cell death in resistance of A2780 cells.

Results obtained in other studies related to the biological characteristics of the natural polysaccharides, confirmed the anti-cancer effect of these compounds. Chen *et al* in 2013 documented medicinal properties of polysaccharide extracted from fungus *Rhizopus nigricans* and revealed that this isolated polysaccharide inhibited human gastric cancer cell growth -BGC-823 using apoptosis increment *via* mitochondrial mediated pathway²⁰.

Lavi *et al* in 2006 reported anti-tumor effect of polysaccharide fraction from mushroom *Pleurotus ostreatus* on HT-29 cell line²¹. Cao *et al* exhibited that *Angelica sinensis* polysaccharide induced apoptosis *via* intrinsic pathway in HeLa cervical cancer cells *in vitro* and *in vivo*²².

In addition, there are evidences on the basis of utilization of natural polysaccharides from flora of terrestrial ecosystem in biomedicine^{10,11,23}. Gamal-elden in 2009 evaluated the biological effect of various fractions of polysaccharide from brown algae *Sargassum latifolium* and proved that E3 fraction indicated anti-cancer activity against leukemia cells as compared with E1, E2 and E4 fraction²⁴. Lee *et al* in 2011 examined the anti-metastatic potential of polysaccharide extracted from *Asterina pectinifera* in MDA-MB-231 breast cancer cells and displayed that extracted polysaccharide had tumor growth inhibitory effect on examined breast cancer cells²⁵.

Lu *et al* in 2012 demonstrated the tumor inhibitory effect of *Coix lacryma-jobi* (Adlay seed) polysaccharide fraction against A549 cancer cells and reported that intrinsic apoptosis pathway was responsible for this cytotoxicity²⁶. In 2014, Wang *et al* reported that *Boschniakia rossica* polysaccharide suppressed Hep2 cell line proliferation with G0/G1 cell cycle arrest and elicited reprogrammed cell death through mitochondrial pathway²⁷. Furthermore, Thangam *et al* displayed the growth inhibitory effect of polysaccharide fractions extracted from *Cymbopogon citratus* against LN-cap and Siha tumor cells²⁸.

p53 is a tumor suppressor and a nuclear transcription factor which exhibits loss of function mutations in part of cancer cell types. Existence of mutation in p53 conferred chemo-resistance phenotype in malignant cells. Oncological studies showed that accumulation of p53 in tumor cell nucleus elicits pro-apoptotic activity²⁹. Yazdanpanahi *et al* elucidated that increase in p53 gene expression is a molecular mechanism responsible for natural compound cytotoxicity in breast cancer cells³⁰. In a previous study, it was indicated that *Ophiocoma erinaceus* (*O. erinaceus*) polysaccharide can be an appropriate cytotoxic compound against human cervical cancer cells¹⁹. Consequently, all experiments performed in this field in agreement with our observations confirmed the importance of natural polysaccharides in the treatment of lethal diseases such as cancer.

Conclusion

In this study, the anti-cancer effect of extracted polysaccharide from brittle star *O. scolopendrina* and taxol (chemotherapeutic drug) alone and in combination was evaluated against resistant ovarian cancer *in vitro*. According to our observations, polysaccharide extracted from *O. scolopendrina* and paclitaxel induced apoptosis cell death *via* intrinsic caspase-dependent pathway in ovarian cancer cells. It can be suggested that this marine polysaccharide was a worthy anti-cancer candidate to increase the anti-tumor efficacy of paclitaxel for treating human ovarian cancer, but additional investigations are needed to assess clinical oncological studies.

Acknowledgement

The authors are very grateful to Mashhad University of Medical Sciences. This research was supported by Islamic Azad University of Mashhad (Research center of Applied Biology).

Conflict of Interest

All of the authors declared no conflict of interests.

References

1. Mutee AF, Salhimi SM, Ghazali FC, Al-Hassan FM, Lim CP, Ibrahim K, et al. Apoptosis induced in human breast cancer cell line by *Acanthaster planci* starfish extract

- compared to tamoxifen. *African J Pharm Pharmacol* 2012;6(3):129-134.
2. Ooi KL, Muhammad TS, Sulaiman SF. Growth arrest and induction of apoptotic and non-apoptotic programmed cell death by, *Physalis minima* L. chloroform extract in human ovarian carcinoma Caov-3 cells. *J Ethnopharmacol* 2010;128(1):92-99.
 3. Alizadehnohi M, Nabiuni M, Nazari Z. The lethal effect of honey bee venom on human ovarian cancer cisplatin resistance cell line A2780cp. *Int Conf Environ Biomed Biotechnol* 2012;41:46-49.
 4. Kumaran NS, Bragadeeswaran S, Thangaraj S. Antimicrobial activities in star fishes *Protoreaster lincki* (Blainville, 1830) and *Pentaceraster regulus* (Muller & Troschel, 1842) against isolated humafish pathogenic and biofilm microorganisms. *J Appl Sci Res* 2011;7(6):818-825.
 5. Tai J, Cheung S, Wu M, Hasman D. Antiproliferation effect of Rosemary (*Rosmarinus officinalis*) on human ovarian cancer cells in vitro. *Phytomedicine* 2012;19(5):436-443.
 6. Meshkini A, Yazdanparast R. Involvement of oxidative stress in taxol-induced apoptosis in chronic myelogenous leukemia K562 cells. *Exp Toxicol Pathol* 2012;64(4):357-365.
 7. Fulda S. Modulation of apoptosis by natural products for cancer therapy. *Planta Med* 2010;76(11):1075-1079.
 8. Folmer F, Jaspars M, Schumacher M, Dicato M, Diederich M. Marine natural products targeting phospholipases A2. *Biochem Pharmacol* 2010;80(12):1793-1800.
 9. Senni K, Pereira J, Gueniche F, Delbarre-Ladrat C, Sinquin C, Ratskoul J, et al. Marine polysaccharides: a source of bioactive molecules for cell therapy and tissue engineering. *Mar Drugs* 2011;9(9):1664-1681.
 10. Venkatesan J, Bhatnagar I, Kim SK. Chitosan-alginate biocomposite containing fucoidan for bone tissue engineering. *Mar Drugs* 2014;12(1):300-316.
 11. Zong A, Cao H, Wang F. Anticancer polysaccharides from natural resources: a review of recent research. *Carbohydr Polym* 2012;90(4):1395-1410.
 12. Angelova S, Gospodinova Z, Krasteva M, Antov G, Lozanov V, Markov T, Bozhanov S, et al. Antitumor activity of Bulgarian herb *Tribulus terrestris* L. on human breast cancer cells. *J BioSci Biotech* 2013;2(1):25-32.
 13. Ramasamy S, Abdul Wahab N, Zainal Abidin N, Manickam S. Effect of extracts from *Phyllanthus watsonii* Airy Shaw on cell apoptosis in cultured human breast cancer MCF-7 cells. *Exp Toxicol Pathol* 2013;65(3):341-349.
 14. Jha RK, Zi-rong X. Biomedical compounds from marine organisms. *Mar Drugs* 2004;2:123-146.
 15. Zupo V, Jüttner F, Maibam C, Butera E, Blom J. Apoptogenic metabolites in fractions of the benthic diatom *Cocconeis scutellum parva*. *Mar Drugs* 2014;12 (1):547-567.
 16. Ramirez-gomez FJ, García-arrarás GE. Echinoderm immunity. *ISJ* 2010;7:211-220.
 17. Czarkwiani A, Dylus DV, Oliveri P. Expression of skeletogenic genes during arm regeneration in the brittle star *Amphiura filiformis*. *Gene Expr Patterns* 2013;13(8):464-472.
 18. Wang W, Hong J, Lee CO, Cho HY, Shin S, Jung JH. Bioactive metabolites from the brittle star *Ophioplocus japonicus*. *Nat Prod Sci* 2004;10(6):253-261.
 19. Baharara J, Amini E. The potential of brittle star extracted polysaccharide in promoting apoptosis via intrinsic signaling pathway. *Avicenna J Med Biotech* 2015;7(4):151-158.
 20. Chen G, Zhang P, Huang T, Yu W, Lin J, Li P, et al. Polysaccharides from *Rhizopus nigricans* mycelia induced apoptosis and G2/M arrest in BGC-823 cells. *Carbohydr Polym* 2013;97(2):800888.
 21. Lavi I, Friesem D, Geresh S, Hadar Y, Schwartz B. An aqueous polysaccharide extract from the edible mushroom *Pleurotus ostreatus* induces anti-proliferative and pro-apoptotic effects on HT-29 colon cancer cells. *Cancer Lett* 2006;244(1):61-70.
 22. Cao W, Li XQ, Wang X, Fan HT, Zhang XN, Hou Y, et al. A novel polysaccharide, isolated from *Angelica sinensis* (Oliv.) Diels induces the apoptosis of cervical cancer HeLa cells through an intrinsic apoptotic pathway. *Phytomedicine* 2010;17(8-9):598-605.
 23. Pomin VH. Holothurian fucosylated chondroitin sulfate. *Mar Drugs* 2014;12(1988):232-254.
 24. Gamal-Eldeen AM, Ahmed EF, Abo-Zeid MA. In vitro cancer chemopreventive properties of polysaccharide extract from the brown alga, *Sargassum latifolium*. *Food Chem Toxicol* 2009;47(6):1378-1384.
 25. Lee K, Shin J, Nam K. Cancer chemopreventive effects of starfish polysaccharide in human breast cancer cells. *Biotechnol Bioprocess Eng* 2011;16(5):987-991.
 26. Lu X, Liu W, Wu J, Li M, Wang J, Wu J, et al. A polysaccharide fraction of adlay seed (*Coix lachryma-jobi* L.) induces apoptosis in human non-small cell lung cancer A549 cells. *Biochem Biophys Res Commun* 2013;430(2):846-851.
 27. Wang Z, Lu C, Wu C, Xu M, Kou X, Kong D et al. Polysaccharide of *Boschniakia rossica* induces apoptosis on laryngeal carcinoma Hep2 cells. *Gene* 2014;536(1):203-206.
 28. Thangam R, Sathuvan M, Poongodi A, Suresh V, Pazhanichamy K, Sivasubramanian S, et al. Activation of intrinsic apoptotic signaling pathway in cancer cells by *Cymbopogon citratus* polysaccharide fractions. *Carbohydr Polym* 2014;107:138-150.
 29. Yazdanpanahi N, Behbahani M, Yektaeiana A. Effect of *Boswellia thurifera* gum methanol extract on cytotoxicity and p53 gene expression in human breast cancer cell line. *Iran J Pharm Res* 2014;13(2):719-724.
 30. Zhang X, Yu H. Matrine inhibits diethylnitrosamine-induced HCC proliferation in rats through inducing apoptosis via p53, Bax-dependent caspase-3 activation pathway and down-regulating MLCK overexpressio. *Iran J Pharm Res* 2016;15(2):491-499.