

Optimization of Fermentation Conditions for Reteplase Expression by *Escherichia coli* Using Response Surface Methodology

Hamze Zare, Hamid Mir Mohammad Sadeghi, and Vajihe Akbari *

Department of Pharmaceutical Biotechnology and Isfahan Pharmaceutical Research Center, Faculty of Pharmacy, Isfahan University of Medical Sciences, Isfahan, Iran

Abstract

Background: Expression of heterologous proteins at large scale is often a challenging job due to plasmid instability, accumulation of acetate and oxidative damage in bioreactors. Therefore, it is necessary to optimize parameters influencing cell growth and expression of recombinant protein.

Methods: In the present study, the optimal culture conditions for expression of reteplase by *Escherichia coli* (*E. coli*) BL21 (DE3) in a bench-top bioreactor was determined. Response Surface Methodology (RSM) based on Box-Behnken design was used to evaluate the effect of three variables (*i.e.*, temperature, shaking speed and pH) and their interactions with cellular growth and protein production. The obtained data were analyzed by Design Expert software.

Results: Based on results of 15 experiments, a response surface quadratic model was developed which was used to explain the relation between production of reteplase and three investigated variables. The high value of "R-Squared" (0.9894) and F-value of 51.99 confirmed the accuracy of this model. According to the developed model, the optimum fermentation conditions for reteplase expression were temperature of 32 °C, shaking speed of 210 rpm, and pH of 8.4. This predicted condition was applied for the production of reteplase in the bioreactor leading to a protein yield of 188 mg/l.

Conclusion: Our results indicate the significant role of culture conditions (*e.g.*, pH, temperature and oxygen supply) in protein expression at large scale and confirm the need for optimization. The proposed strategy here can also be applied to experimental set-up of optimization for fermentation of other proteins.

* Corresponding author:

Vajihe Akbari, Ph.D.,
Department of Pharmaceutical
Biotechnology, Isfahan University
of Medical Sciences, Isfahan, Iran
Tel: +98 313 792 7060
Fax: +98 313 6680011
E-mail:
v_akbari@pharm.mui.ac.ir
Received: 9 Jun 2018
Accepted: 27 Aug 2018

Avicenna J Med Biotech 2019; 11(2): 162-168

Keywords: Bioreactors, *Escherichia coli*, Fermentation, Reteplase

Introduction

Reteplase is a recombinant version of tissue Plasminogen Activator (tPA), a proteolytic enzyme (Serine protease) which converts plasminogen to plasmin and dissolves blood clots (thrombolysis) ¹. Reteplase, a mutant of alteplase, contains 357 of the 527 amino acids of tPA and consists of kringle 2 and protease domains of the parent molecule. The kringle 2 domain is responsible for specific binding of reteplase to fibrin rich clots, while the protease domain degrades the fibrin matrix through converting plasminogen to plasmin ². Reteplase was approved by the Food and Drug Administration (FDA) in 1996 for management of acute myocardial infarction ³. It is a third-generation of thrombolytics and in comparison with alteplase has lower affinity to fibrin leading to its better penetration into clots and subsequently lower incidence of bleeding. Furthermore, reteplase has longer half-life compared with alteplase making it more rapid, easy and safe to be

administered ^{4,5}. This molecule lacks carbohydrate side chains of the original molecule, therefore it can be easily expressed by *Escherichia coli* (*E. coli*) ⁵. However, other expression systems including *Pichia pastoris* (*P. pastoris*), baculo virus-insect cell, tobacco plants were used for production of reteplase ⁶⁻⁸.

E. coli is a common host which is widely used for the production of heterologous proteins practically non-glycosylated ones ⁹. This protein expression platform has some advantages including rapid growth on inexpensive substrates, easy obtaining of high cell densities and well-studied genetic and physiological properties ¹⁰. Moreover, *E. coli* can be easily manipulated and has a large number of cloning vectors and various cultivation strategies. Considering these superiorities, *E. coli* can be a suitable host for large-scale manufacturing of heterologous proteins ¹¹.

Large-scale bioprocess of proteins in bioreactor provides well-controlled culture environment [e.g., pH value, temperature, shear forces and the Dissolved Oxygen (DO) concentration]¹². It is necessary to optimize fermentation conditions for improvement of the yield and efficiency of protein production in a bioreactor¹³. There are different statistical design approaches for optimization of the fermentation process. One of these methods is one-variable-at-a-time optimization where one parameter is varied but others are kept constant. This approach has some disadvantages such as requiring numerous experiments, being laborious and time-consuming and being unable to identify the interactions between the variables which cause misinterpretation of the results^{14,15}.

Response Surface Methodology (RSM) is an alternative approach being able to describe the possible interactions between experimental variables and accurately predict the optimal condition¹⁶. Although RSM is widely used for agriculture, engineering and food, this method has been also utilized for the optimization of bioprocesses¹⁵⁻¹⁷. The aim of this study was to optimize fermentation conditions (e.g., temperature, pH and rotating speed) of reteplase in a bench-top bioreactor using RSM.

Materials and Methods

Microorganism and plasmid

BL21 (DE3), *E. coli* str. B F⁻ompT gal dcmlonhsdS_B (r_B-m_B⁻) λ(DE3 [lacI lacUV5-T7p07 ind1 sam7 nin5]) [malB⁺]_{K-12}(λ^S) (Novagen, USA) was used as the bacterial host for the expression of reteplase. This strain was transformed with the recombinant plasmid (pDset-527-Ret) using heat shock method. pDset-527-Ret was used as an expression vector containing the synthetic gene of reteplase tagged with hexa histidine whose expression was under the control of Lac promoter.

Small scale expression

A single positive colony was inoculated into Luria-Bertan (LB) broth containing ampicillin (100 µg/ml) and incubated at 37°C overnight. Then, this culture was used to inoculate (10% v/v) 50 ml of fresh LB broth and incubated at 37°C and 180 rpm to reach an optical density (OD₆₀₀) of 0.4-0.6. To induce protein expression, isopropyl β-D-1-thiogalactopyranoside (IPTG) to the final concentrations of 1 mM was added and the culture was further incubated at 37°C for 2 hr.

Sodium dodecyl sulfate polyacrylamide gel electrophoresis (SDS-PAGE) and western blot analysis

Protein samples were prepared and heated to 95°C for 5 min to disrupt protein structures. The samples were loaded onto a 12% SDS-polyacrylamide gel and separated by electrophoresis. The gel was subjected to Coomassie staining and destaining.

For western blot analysis, separated proteins were transferred on to a nitrocellulose membrane. Then, the membrane was blocked using 3% skim milk and incu-

bated with Anti-6X His tag (HRP) antibody (Abcam, USA, 1:10,000) at ambient room temperature for 1 hr. After washing, the membrane was incubated with 3,3'-diaminobenzidine to visualize blots.

Expression of protein in bioreactor

A 2-L autoclavable glass stirred fermenter (BioG-Micom, Biotron Inc. Korea) with two six-blade Rushton turbines was used for large scale production of reteplase. Frozen glycerol stock was used to prepare pre-inoculum culture and 5 ml of it was added to 150 ml of fresh LB medium and incubated overnight at 37°C and 180 rpm. This overnight culture was added to the fermenter containing 1500 ml LB broth supplemented with ampicillin under sterile conditions. After reaching to exponential growth phase (OD₆₀₀ 0.4-0.6), the protein expression was induced by addition of IPTG for 4 hr. During the entire process, the pH of medium was automatically controlled by adding sterile HCl or NaOH solution (0.5 N). Propylene glycol as antifoam was added manually when necessary.

Experimental design and optimization of cultivation by response surface methodology

The effect of three independent variables (i.e., pH, temperature and shaking speed) on expression of reteplase by *E. coli* in the bioreactor was evaluated using RSM. Box-Behnken design was applied and each variable was investigated in three levels (-1 as the minimum value, 1 as the maximum value and 0 as the central point). Table 1 presents the level and code of independent variables. Using this design, a set of 15 experimental runs was developed (Table 2) and the obtained data were evaluated by Design Expert software (Version 8.0.7.1, StatEase Inc., Minneapolis, USA).

Analytical methods

To determine cell growth and protein expression, samples were taken every 1 hr during the bioreactor culture. OD₆₀₀ of samples was evaluated to measure the growth of culture and biomass production. Protein expression in each sample was monitored using 12% SDS-PAGE. To estimate amount of protein expression, the intensity of corresponding bond was evaluated using Gel Analyzer 2010 software (Lazar Software, Hungary).

At the final stage of protein expression, bacterial cells were harvested by centrifugation at 7,000×g for 15 min. The cell disruption was performed using sonication and soluble and insoluble fractions were separated by centrifugation. The insoluble fraction (i.e., inclusion bodies) was solubilized using denaturing agent

Table 1. Variables and levels used in the experimental design

Symbol	Variable	Coded level			Unit
		-1	0	1	
A	Temperature	23	30	37	°C
B	Shaking speed	200	300	400	rpm
C	pH	6.5	7.5	8.5	-

Optimization of Fermentation Conditions for Reteplase

Table 2. Box–Behnken experimental design of 3 factors and 3 levels

Run	A (°C)	B (rpm)	C (pH)	Protein expression (µg/ml)	Biomass production, dry weight (mg/ml)
1	30	300	7.5	60.1	1.58
2	30	300	7.5	65.3	1.63
3	23	300	6.5	31.3	1.46
4	30	200	6.5	44.4	1.24
5	23	300	8.5	94.5	1.6
6	37	200	7.5	74.5	1.32
7	30	400	8.5	143.2	1.5
8	37	400	7.5	60	1.7
9	30	300	7.5	69.2	1.62
10	30	400	6.5	91.4	1.8
11	37	300	8.5	140.7	1.42
12	23	200	7.5	56.2	1.26
13	23	400	7.5	43.7	2.04
14	30	200	8.5	185.2	1.42
15	37	300	6.5	37.2	1.6

and refolded using stepwise dialysis. The sample was purified using Ni-NTA affinity column, as described previously¹⁸. Then, 20 µl of the sample was applied for determining biological activity by Assay Sense Human tPA Chromogenic Activity Kit (Assaypro, USA). The commercial reteplase (Retelies®) was used as a positive control and the buffer as a negative control¹⁹.

Results

Small scale expression of reteplase

Bacterial cell harboring pDset-527-Ret plasmid was used for the expression of reteplase using IPTG induction (1 mM) at 37°C at shake flask scale. Protein expression was evaluated by SDS–PAGE and western blotting. Figure 1 shows expression of reteplase with an approximately 39 kDa molecular weight. Western blotting confirmed that the expressed protein is a His-tagged protein (Figure 1).

Experimental design and modeling for production of reteplase

The experimental design applied in the present work gave 12 runs in triplicates at center points. As a result, a total of 15 experiments were performed (Table 2). The amount of expressed reteplase along with biomass production (based on measurements of OD₆₀₀ and dry cell weight) was determined at the final fermentation time (Table 2). The concentration of reteplase was considered as the chosen response to evaluate the effect of three variables on production of reteplase. Based on the result of 15 experiments, the relation between production of reteplase and three investigated variables can be explained by the following quadratic equation:

$$\text{Protein expression } (\mu\text{g/ml}) = 64.87 + 10.84A - 2.75B + 44.91C - 0.50AB + 10.07AC - 22.25BC - 23.20A^2 + 16.93B^2 + 34.25C^2.$$

Model analysis and validation

The statistical significance of the quadratic model was determined by the F-test and the Analysis of Variance (ANOVA) as it is presented in table 3. The high

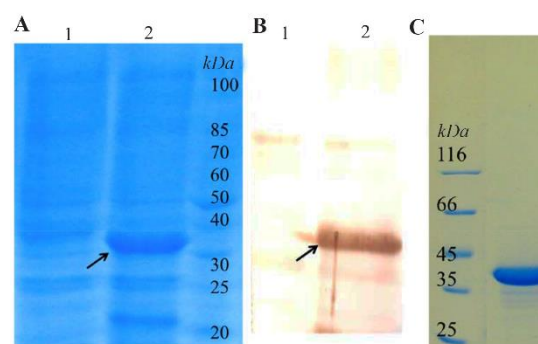


Figure 1. Expression of reteplase induced by 1 mM IPTG at 37°C in shake flask. A) SDS-PAGE analysis; Lane 1: Uninduced total bacterial protein; Lane 2: Induced total bacterial protein. B) Western blot analysis; Lane 1: Uninduced total bacterial protein; Lane 2: Induced total bacterial protein. C). SDS-PAGE analysis of commercial reteplase.

value of "R-Squared" (0.9894) implies goodness of the developed model. The "Pred R-Squared" of 0.8516 is in reasonable agreement with the "Adj R-Squared" of 0.9704, indicating a good correlation according to the model. The "Model F-value" of 51.99 indicates that the model is significant and there is only a 0.02% chance that "Model F-value" this large could occur because of noise. "Adeq Precision" measuring the signal to noise ratio was 24.963. A value greater than 4 indicates that the model can be applied to navigate the design space. Figure 2 presents the normal probability plot indicating a normal distribution of the studentized residuals. Accordingly, this model is a suitable and accurate model for prediction of reteplase expression at different fermentation conditions.

A, C, AC, BC, A², B² and C² are significant terms of the model (p<0.05). The linear and square terms of temperature, the linear and square terms of pH, the term of interaction between temperature and pH, the term of interaction between shaking speed and pH were significant. The other terms B and AB were not significant in terms of production of reteplase in the fermenter (p>0.05).

Table 3. ANOVA for response surface quadratic model

Source	Sum of squares	df	Mean square	F value	Prob> F	
Model	27307.53	9	3034.17	51.99	0.0002	Significant
A (Temperature) °C	939.61	1	939.61	16.10	0.0102	Significant
B (Shaking speed)	60.50	1	60.50	1.04	0.3553	Not significant
C (pH)	16137.06	1	16137.06	276.49	< 0.0001	Significant
AB	1.00	1	1.00	0.0171	0.9010	Not significant
AC	406.02	1	406.02	6.96	0.0461	Significant
BC	1980.25	1	1980.25	33.93	0.0021	Significant
A ²	1986.63	1	1986.63	34.04	0.0021	Significant
B ²	1058.20	1	1058.20	18.13	0.0080	Significant
C ²	4332.36	1	4332.36	74.23	0.0003	Significant
Residual	291.82	5	58.36			
Lack of fit	250.13	3	83.38		0.2064	Not significant
Pure error	41.69	2	20.84			
Cor total	27599.35	14				

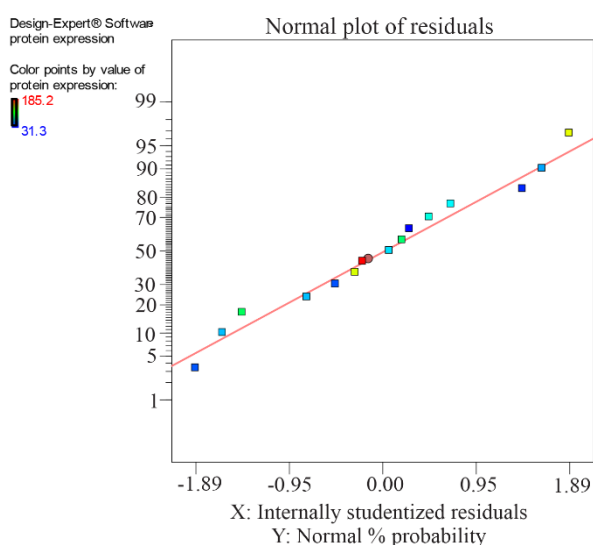


Figure 2. Normal (%) probability plot of the 'studentized' residuals for the model of reteplase fermentation.

Figure 3 presents the response surface plot of the interaction between two variables while the third one remains constant. As figure 3A shows, production of reteplase increased with an enhancement in temperature, especially when pH is at its high level. As shown in figure 3B, the influence of pH and shaking speed interaction on reteplase production was significant. However, the interaction between temperature and shaking speed (Figure 3C) was not significant ($p=0.901$).

According to the developed model, the optimum fermentation conditions for reteplase production were temperature of 32°C, shaking speed of 210 rpm, and pH of 8.4. This predicted condition was applied for production of reteplase in the bioreactor (Figure 4) leading to a protein concentration of 188 µg/ml (with a biological activity of 0.08 IU) which was close to the predicted value (186 µg/ml). After refolding and purification (Figure 5), the sample was subjected to biological assessment. The specific activity of produced protein was found to be 0.42 IU per 1 mg of protein which

was comparable with the commercial version (0.56 IU per 1 mg of protein).

Discussion

The effect of temperature, concentration of inducer and shaking speed on reteplase production in shake flask by *E. coli* BL21 (DE3) was previously evaluated using one-variable-at-a-time optimization²⁰. However, the scale-up from shake flasks to bioreactors is often a challenging job²¹. Plasmid instability, accumulation of acetate and oxidative damage in bioreactors could decrease expression of heterologous protein in large scales^{22,23}.

Therefore, it is important to optimize parameters which physiologically influence cell growth and expression of recombinant proteins including operating variables (e.g., temperature, pH, shaking and aeration), medium components, and supplements (e.g., glucose and amino acids)²⁴. Here, the optimal culture conditions for expression of reteplase by *E. coli* BL21 (DE3) in a bench-top bioreactor were determined using RSM.

RSM is a collection of mathematical and statistical techniques for multivariate optimization of a response (Dependent variable). RSM was used in this study based on Box-Behnken design for optimization of culture conditions. This method can evaluate the effect of different independent variables on a response using a minimum number of experiments. Additionally, in Box-Behnken design, several variables can be simultaneously changed at three levels and the interactions between them can be more efficiently determined²⁵.

Shaking speed is one of the variables influencing protein expression and cell growth in the bioreactor. According to our results, the most significant expression of reteplase in the fermenter was observed at the lowest shaking speed. These results were in agreement with our previous study in which lower shaking speed resulted in more reteplase expression in shake flask²⁰. Higher shaking speed can lead to better oxygen supply and therefore higher cell growth. In the present study, lower reteplase expression was observed at higher

Optimization of Fermentation Conditions for Reteplase

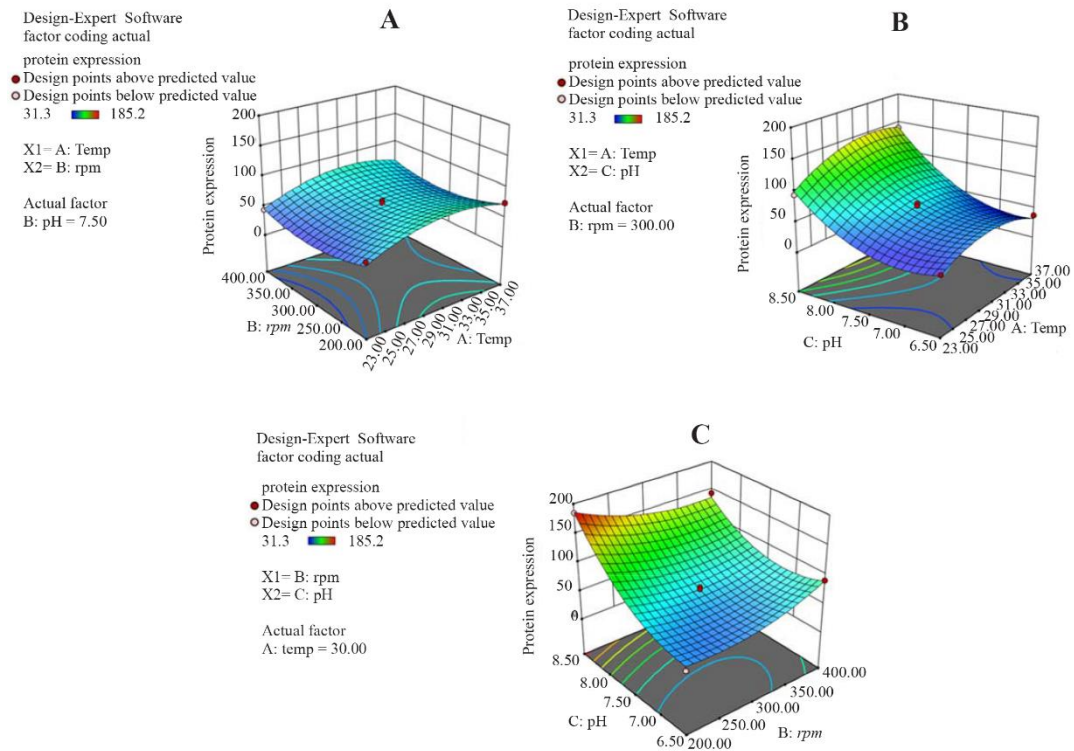


Figure 3. Response surface of reteplase expression represents the interaction between two fermentation variables by keeping other variable constant. A) Interaction between temperature and shaking speed while pH is 7.5; B) Interaction between temperature and pH while shaking speed is 300 rpm. C) Interaction between pH and shaking speed while temperature is 30°C.

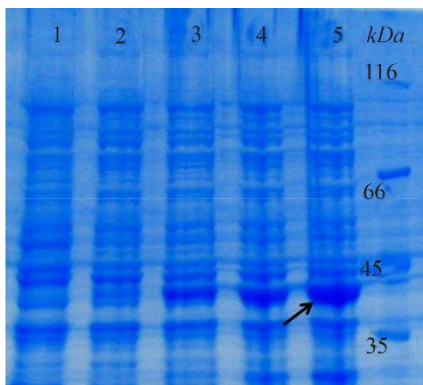


Figure 4. Expression of reteplase under optimum fermentation conditions in a 2-L bioreactor, after 0, 1, 2, 3 and 4 hr (Lanes 1-5) of induction with IPTG.

shaking speeds, while higher agitation rates led to higher cell density. It could be explained based on the fact that a higher cell density can result in more acetate accumulation and less availability of some substances which improve the recombinant protein expression. In agreement with our results, Wang *et al* reported that limitation of oxygen supply resulted in more tPA expression by *E. coli* BL21(DE3) in buffered LB-glycerol medium²⁶. They suggested lowering oxygen supply and decreasing cell density led to less acetate accumulation and higher ammonium production which was attributed to enhancement of tPA synthesis²⁶. There are many reports about both increase and decrease of

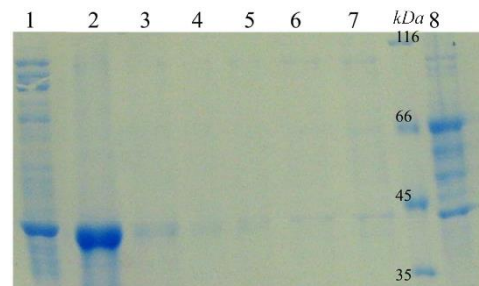


Figure 5. Refolding and purification of reteplase. Lane 1: Refolded protein before adding into column; Lane 2: Eluted protein; Lane 3-7: Wash fractions and Lane 8: Flow-through of column.

recombinant proteins expression caused by oxygen limitation²⁷. Therefore, different aeration rates and shaking speeds must be evaluated for each individual protein.

pH is one of the key parameters which can influence expression of membrane and periplasmic proteins and metabolic enzymes²⁸. Furthermore, pH can affect the activity of bacterial protease and secretory production of proteins^{29,30}. Here, the effect of pH of growth medium on expression of reteplase was also evaluated which revealed that a pH increase could improve the level of protein production. In agreement with our results, Wang *et al* reported that an alkaline shift can increase expression levels of three examined proteins. They proposed that keeping pH of growth medium around 8 can increase tolerance of *E. coli* BL21(DE3) to acetate stress²⁶.

Acetate accumulation and acidification of the medium are often observed for prolonged expression of recombinant proteins in LB medium. However, rich cultivation media such as Terrific Broth (TB) show less decrease in pH during growth as they cause higher production of ammonia³¹.

Temperature is another critical factor influencing the activity of cellular enzymes, the yield of protein production, the secretion of protein and the solubility of expressed protein¹⁰. In the present study, the optimum temperature for expression of reteplase in the bioreactor was found to be 32°C. There are many other reports about better expression of protein at temperature around 30°C³². Practically, the quality of expressed protein at this temperature was higher as the activity and expression of molecular chaperones increased at lower temperature³³⁻³⁵.

There are few reports about yield of expression of reteplase by *E. coli*. Expression of reteplase in *E. coli* using a helper vector was firstly reported by Kohnert *et al* and overexpression of reteplase as inclusion bodies corresponded to more than 30% of cellular protein^{36,37}. Another research group reported improvement of soluble expression of reteplase by co-expression of disulfide bond isomerase DsbC yielding 70 mg protein per 1 liter of culture³⁸. Shafiee *et al* described production of reteplase in a stirred tank bioreactor using *E. coli* TOP10 as a host and arabinose as an inducer. They reported the yield of protein expression was 90.5 mg per 1 liter of fermentation broth¹⁹. In the present study, 188 mg protein was obtained from one liter of bacterial culture. To the best of our knowledge, the results of the current work are the highest protein yield for production of reteplase in *E. coli* in a bench-scale bioreactor.

Conclusion

In the present work, RSM was applied to evaluate the effect of three fermentation variables including temperature, pH and shaking speed on expression of reteplase by *E. coli* in a bench-top bioreactor. RSM based on Box-Behnken design was utilized to minimize the number of experiments and simplify the data analysis. A wide range of reteplase production (31-185 µg/ml) was obtained at 15 experimental runs. These results indicate the significant role of culture conditions (*e.g.*, pH, temperature and oxygen supply) in protein expression in large scale and confirm the need for optimization. The highest amount of protein was expressed when fermentation was carried out at temperature of 32°C, shaking speed of 210 rpm and pH of 8.4. The proposed strategy here can also be applied to experimental set-up of optimization for fermentation of other proteins.

Acknowledgement

We thank Mrs. Fatemeh Moazen for her excellent technical assistance. This study was financially supported

by a grant (396508) from the Research Council of Isfahan University of Medical Sciences, Isfahan, Iran.

References

- Campbell J, Hilleman DE. Recombinant peptides in thrombolysis. *Seminars in Thrombosis and Hemostasis* 2010;36(5):529-536.
- Wooster MB, Luzier AB. Reteplase: a new thrombolytic for the treatment of acute myocardial infarction. *Ann Pharmacother* 1999;33(3):318-324.
- Barnett AA. FDA follows Europe to approve reteplase. *The Lancet* 1996;348(9037):1306.
- Nordt TK, Bode C. Thrombolysis: newer thrombolytic agents and their role in clinical medicine. *Heart* 2003;89(11):1358-1362.
- Hilleman DE, Tsikouris JP, Seals AA, Marmur JD. Fibrinolytic agents for the management of ST-segment elevation myocardial infarction. *Pharmacotherapy* 2007;27(11):1558-1570.
- Zou M, Chu J. Expression of reteplase in recombinant *Pichia pastoris*. *Pharm Biotechnol* 2008;15(3):172-175.
- Aflakiyan S, Sadeghi HM, Shokrgozar M, Rabbani M, Bouzari S, Jahanian-Najafabadi A. Expression of the recombinant plasminogen activator (reteplase) by a nonlytic insect cell expression system. *Res Pharm Sci* 2013;8(1):9-15.
- Hidalgo D, Abdoli-Nasab M, Jalali-Javaran M, Bru-Martínez R, Cusidó RM, Corchete P, et al. Biotechnological production of recombinant tissue plasminogen activator protein (reteplase) from transplastomic tobacco cell cultures. *Plant Physiol Biochem* 2017;118:130-137.
- Chen R. Bacterial expression systems for recombinant protein production: *E. coli* and beyond. *Biotechnol Adv* 2012;30(5):1102-1107.
- Gadgil M, Kapur V, Hu WS. Transcriptional response of *Escherichia coli* to temperature shift. *Biotechnol Prog* 2005;21(3):689-699.
- Tripathi NK. High yield production of heterologous proteins with *Escherichia coli*. *Defence Sci J* 2009;59(2):137-146.
- Hsu YL, Wu WT. A novel approach for scaling-up a fermentation system. *Biochem Eng J* 2002;11(2-3):123-130.
- Schmidt FR. Optimization and scale up of industrial fermentation processes. *Appl Microbiol Biotechnol* 2005;68(4):425-435.
- Baş D, Boyacı IH. Modeling and optimization I: Usability of response surface methodology. *J Food Eng* 2007;78(3):836-845.
- Bezerra MA, Santelli RE, Oliveira EP, Villar LS, Escalera LA. Response surface methodology (RSM) as a tool for optimization in analytical chemistry. *Talanta* 2008;76(5):965-977.
- Liu N, Jiang J, Yan F, Xu Y, Yang M, Gao Y, et al. Optimization of simultaneous production of volatile fatty acids and bio-hydrogen from food waste using response surface methodology. *RSC Advances* 2018;8(19):10457-10464.

Optimization of Fermentation Conditions for Reteplase

17. Giovanni M. Response surface methodology and product optimization. *Food Technol* 1983;37(11):41-45.
18. Akbari V, Sadeghi HMM, Jafarian-Dehkordi A, Abedi D, Chou CP. Improved biological activity of a single chain antibody fragment against human epidermal growth factor receptor 2 (HER2) expressed in the periplasm of *Escherichia coli*. *Protein Expr Purif* 2015;116:66-74.
19. Shafiee F, Moazen F, Rabbani M, Sadeghi HMM. Expression and activity evaluation of reteplase in *Escherichia coli* TOP10. *J Paramedical Sci* 2015;6(3):58-64.
20. Sadeghi HM, Rabbani M, Rismani E, Moazen F, Khodabakhsh F, Dormiani K, et al. Optimization of the expression of reteplase in *Escherichia coli*. *Res Pharm Sci* 2011;6(2):87-92.
21. Schmidt FR. Optimization and scale up of industrial fermentation processes. *Appl Microbiol Biotechnol* 2005;68(4):425-435.
22. Grabherr R, Nilsson E, Striedner G, Bayer K. Stabilizing plasmid copy number to improve recombinant protein production. *Biotechnol Bioeng* 2002;77(2):142-147.
23. Jensen EB, Carlsen S. Production of recombinant human growth hormone in *Escherichia coli*: expression of different precursors and physiological effects of glucose, acetate, and salts. *Biotechnol Bioeng* 1990;36(1):1-11.
24. Coleman ME, Tamplin ML, Phillips JG, Marmer BS. Influence of agitation, inoculum density, pH, and strain on the growth parameters of *Escherichia coli* O157: H7-relevance to risk assessment. *Int J Food Microbiol* 2003;83(2):147-160.
25. Ferreira SC, Bruns R, Ferreira H, Matos G, David J, Brandao G, et al. Box-Behnken design: an alternative for the optimization of analytical methods. *Anal Chim Acta* 2007;597(2):179-186.
26. Wang H, Wang F, Wei D. Impact of oxygen supply on rtPA expression in *Escherichia coli* BL21 (DE3): ammonia effects. *Appl Microbiol Biotechnol* 2009;82(2):249-259.
27. Qoronfleh MW. Dissolved oxygen concentration affects the accumulation of HIV-1 recombinant proteins in *Escherichia coli*. *Appl Biochem Biotechnol* 1999;80(2):107-120.
28. Stancik LM, Stancik DM, Schmidt B, Barnhart DM, Yoncheva YN, Slonczewski JL. pH-dependent expression of periplasmic proteins and amino acid catabolism in *Escherichia coli*. *J Bacteriol* 2002;184(15):4246-4258.
29. O'Donnell D, Wang L, Xu J, Ridgway D, Gu T, Moo-Young M. Enhanced heterologous protein production in *Aspergillus niger* through pH control of extracellular protease activity. *Biochem Eng J* 2001;8(3):187-193.
30. Choi JH, Lee SY. Secretory and extracellular production of recombinant proteins using *Escherichia coli*. *Appl Microbiol Biotechnol* 2004;64(5):625-635.
31. Ukkonen K, Vasala A, Ojamo H, Neubauer P. High-yield production of biologically active recombinant protein in shake flask culture by combination of enzyme-based glucose delivery and increased oxygen transfer. *Microbial Cell Fact* 2011;10:107.
32. Mühlmann M, Forsten E, Noack S, Büchs J. Optimizing recombinant protein expression via automated induction profiling in microtiter plates at different temperatures. *Microb Cell Fact* 2017;16(1):220.
33. Mogk A, Mayer MP, Deuerling E. Mechanisms of protein folding: molecular chaperones and their application in biotechnology. *Chembiochem* 2002;3(9):807-814.
34. Ferrer M, Chernikova TN, Yakimov MM, Golyshin PN, Timmis KN. Chaperonins govern growth of *Escherichia coli* at low temperatures. *Nat Biotechnol* 2003;21(11):1266-1267.
35. de Groot NS, Ventura S. Effect of temperature on protein quality in bacterial inclusion bodies. *FEBS Lett* 2006;580(27):6471-6476.
36. Brinkmann U, Mattes RE, Buckel P. High-level expression of recombinant genes in *Escherichia coli* is dependent on the availability of the dnaY gene product. *Gene* 1989;85(1):109-114.
37. Kohnert U, Rudolph R, Verheijen JH, Jacoline E, Wening-Verhoeff D, Stern A, et al. Biochemical properties of the kringle 2 and protease domains are maintained in the refolded t-PA deletion variant BM 06.022. *Protein Eng Des Sel* 1992;5(1):93-100.
38. Zhuo X-F, Zhang Y-Y, Guan Y-X, Yao S-J. Co-expression of disulfide oxidoreductases DsbA/DsbC markedly enhanced soluble and functional expression of reteplase in *Escherichia coli*. *J Biotechnol* 2014;192:197-203.